

FITC Anti-CD45RA antibody [MEM-56] ab18240

3 References [画像数 1](#)

製品の概要

製品名	FITC Anti-CD45RA antibody [MEM-56]
製品の詳細	FITC Mouse monoclonal [MEM-56] to CD45RA
由来種	Mouse
標識	FITC. Ex: 493nm, Em: 528nm
アプリケーション	適用あり: Flow Cyt
種交差性	交差種: Human
免疫原	Tissue, cells or virus corresponding to Human CD45RA. Human thymocytes and T lymphocytes Database link: P08575-8
特記事項	<p>The purified antibody is conjugated with Fluorescein isothiocyanate (FITC) under optimum conditions. The reagent is free of unconjugated FITC and adjusted for direct use.</p> <p>The Life Science industry has been in the grips of a reproducibility crisis for a number of years. Abcam is leading the way in addressing this with our range of recombinant monoclonal antibodies and knockout edited cell lines for gold-standard validation. Please check that this product meets your needs before purchasing.</p> <p>If you have any questions, special requirements or concerns, please send us an inquiry and/or contact our Support team ahead of purchase. Recommended alternatives for this product can be found below, along with publications, customer reviews and Q&As</p>

製品の特性

製品の状態	Liquid
保存方法	Shipped at 4°C. Store at +4°C.
バッファー	pH: 7.40 Preservative: 0.097% Sodium azide Constituents: PBS, BSA
精製度	Protein A purified
ポリ/モノ	モノクローナル
クローン名	MEM-56
アイソタイプ	IgG2b

アプリケーション

The Abpromise guarantee **Abpromise保証は、** 次のテスト済みアプリケーションにおけるab18240の使用に適用されます
アプリケーションノートには、推奨の開始希釈率がありますが、適切な希釈率につきましてはご検討ください。

アプリケーション	Abreviews	特記事項
Flow Cyt		

追加情報

Flow Cyt: This reagent is designed for Flow Cytometry analysis of human blood cells using 20 ul reagent / 100 ul whole blood.

Not tested in other applications.

Optimal dilutions/concentrations should be determined by the end user.

ターゲット情報

機能

Protein tyrosine-protein phosphatase required for T-cell activation through the antigen receptor. Acts as a positive regulator of T-cell coactivation upon binding to DPP4. The first PTPase domain has enzymatic activity, while the second one seems to affect the substrate specificity of the first one. Upon T-cell activation, recruits and dephosphorylates SKAP1 and FYN. Dephosphorylates LYN, and thereby modulates LYN activity.

関連疾患

Severe combined immunodeficiency autosomal recessive T-cell-negative/B-cell-positive/NK-cell-positive
Multiple sclerosis

配列類似性

Belongs to the protein-tyrosine phosphatase family. Receptor class 1/6 subfamily.
Contains 2 fibronectin type-III domains.
Contains 2 tyrosine-protein phosphatase domains.

ドメイン

The first PTPase domain interacts with SKAP1.

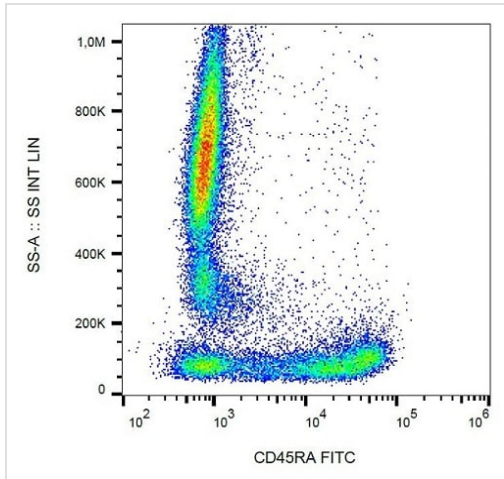
翻訳後修飾

Heavily N- and O-glycosylated.

細胞内局在

Membrane. Membrane raft. Colocalized with DPP4 in membrane rafts.

画像



Flow cytometry analysis of human peripheral blood cells labeling CD45RA with ab18240.

Flow Cytometry - FITC Anti-CD45RA antibody
[MEM-56] (ab18240)

Please note: All products are "FOR RESEARCH USE ONLY. NOT FOR USE IN DIAGNOSTIC PROCEDURES"

Our Abpromise to you: Quality guaranteed and expert technical support

- Replacement or refund for products not performing as stated on the datasheet
- Valid for 12 months from date of delivery
- Response to your inquiry within 24 hours
- We provide support in Chinese, English, French, German, Japanese and Spanish
- Extensive multi-media technical resources to help you
- We investigate all quality concerns to ensure our products perform to the highest standards

If the product does not perform as described on this datasheet, we will offer a refund or replacement. For full details of the Abpromise, please visit <https://www.abcam.co.jp/abpromise> or contact our technical team.

Terms and conditions

- Guarantee only valid for products bought direct from Abcam or one of our authorized distributors