

# FITC Anti-CD4 antibody [MEM-241] ab18281

[2 References](#) [画像数 1](#)

### 製品の概要

---

製品名	FITC Anti-CD4 antibody [MEM-241]
製品の詳細	FITC Mouse monoclonal [MEM-241] to CD4
由来種	Mouse
標識	FITC. Ex: 493nm, Em: 528nm
アプリケーション	<b>適用あり:</b> Flow Cyt
種交差性	<b>交差種:</b> Human
免疫原	Fusion protein (Human).
特記事項	<p>The Life Science industry has been in the grips of a reproducibility crisis for a number of years. Abcam is leading the way in addressing this with our range of recombinant monoclonal antibodies and knockout edited cell lines for gold-standard validation. Please check that this product meets your needs before purchasing.</p> <p>If you have any questions, special requirements or concerns, please send us an inquiry and/or contact our Support team ahead of purchase. Recommended alternatives for this product can be found below, along with publications, customer reviews and Q&amp;As</p>

### 製品の特性

---

製品の状態	Liquid
保存方法	Shipped at 4°C. Store at +4°C.
バッファー	pH: 7.40 Preservative: 0.097% Sodium azide Constituents: PBS, BSA
精製度	Protein G purified
ポリ/モノ	モノクローナル
クローン名	MEM-241
アイソタイプ	IgG1

### アプリケーション

---

The Abpromise guarantee

Abpromise保証は、次のテスト済みアプリケーションにおけるab18281の使用に適用されます

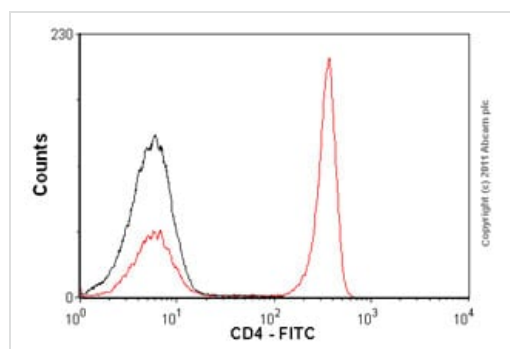
アプリケーションノートには、推奨の開始希釈率がありますが、適切な希釈率につきましてはご確認ください。

アプリケーション	Abreviews	特記事項
Flow Cyt		Use 4.15µl for 10 <sup>6</sup> cells. <b>ab91356</b> - Mouse monoclonal IgG1, is suitable for use as an isotype control with this antibody.

## ターゲット情報

機能	Accessory protein for MHC class-II antigen/T-cell receptor interaction. May regulate T-cell activation. Induces the aggregation of lipid rafts.
配列類似性	Contains 3 Ig-like C2-type (immunoglobulin-like) domains. Contains 1 Ig-like V-type (immunoglobulin-like) domain.
翻訳後修飾	Palmitoylation and association with LCK contribute to the enrichment of CD4 in lipid rafts.
細胞内局在	Cell membrane. Localizes to lipid rafts. Removed from plasma membrane by HIV-1 Nef protein that increases clathrin-dependent endocytosis of this antigen to target it to lysosomal degradation. Cell surface expression is also down-modulated by HIV-1 Envelope polyprotein gp160 that interacts with, and sequesters CD4 in the endoplasmic reticulum.

## 画像



Flow Cytometry - FITC Anti-CD4 antibody [MEM-241] (ab18281)

Overlay histogram showing peripheral blood lymphocytes stained with ab18281 (red line). The cells incubated in 1x PBS / 10% normal goat serum / 0.3M glycine to block non-specific protein-protein interactions. The cells were then incubated with the antibody (ab18281, 0.5 µg/1x10<sup>6</sup> cells) for 30 min at 22°C. Isotype control antibody (black line) was mouse IgG1 FITC (2 µg/1x10<sup>6</sup> cells) for 30 min at 22°C. Acquisition of >5,000 events was performed.

**Please note:** All products are "FOR RESEARCH USE ONLY. NOT FOR USE IN DIAGNOSTIC PROCEDURES"

## Our Abpromise to you: Quality guaranteed and expert technical support

- Replacement or refund for products not performing as stated on the datasheet
- Valid for 12 months from date of delivery
- Response to your inquiry within 24 hours
- We provide support in Chinese, English, French, German, Japanese and Spanish
- Extensive multi-media technical resources to help you

- We investigate all quality concerns to ensure our products perform to the highest standards

If the product does not perform as described on this datasheet, we will offer a refund or replacement. For full details of the Abpromise, please visit <https://www.abcam.co.jp/abpromise> or contact our technical team.

### **Terms and conditions**

---

- Guarantee only valid for products bought direct from Abcam or one of our authorized distributors