

### FITC Anti-CD38 antibody [GR7A4] ab90877

#### 画像数 1

#### 製品の概要

---

製品名	FITC Anti-CD38 antibody [GR7A4]
製品の詳細	FITC Mouse monoclonal [GR7A4] to CD38
由来種	Mouse
標識	FITC. Ex: 493nm, Em: 528nm
アプリケーション	<b>適用あり:</b> Flow Cyt
種交差性	<b>交差種:</b> Human
免疫原	Synthetic peptide
ポジティブ・コントロール	Early B and T cells, activated T cells, germinal centre B cells, plasma cells from Anticoagulated (EDTA) blood or bone marrow.
特記事項	<p>The Life Science industry has been in the grips of a reproducibility crisis for a number of years. Abcam is leading the way in addressing this with our range of recombinant monoclonal antibodies and knockout edited cell lines for gold-standard validation. Please check that this product meets your needs before purchasing.</p> <p>If you have any questions, special requirements or concerns, please send us an inquiry and/or contact our Support team ahead of purchase. Recommended alternatives for this product can be found below, along with publications, customer reviews and Q&amp;As</p>

#### 製品の特性

---

製品の状態	Liquid
保存方法	Shipped at 4°C. Store at +4°C.
バッファー	pH: 7.20 Preservative: 0.09% Sodium azide Constituent: 1% BSA
精製度	Immunogen affinity purified
ポリ/モノ	モノクローナル
クローン名	GR7A4
アイソタイプ	IgG1

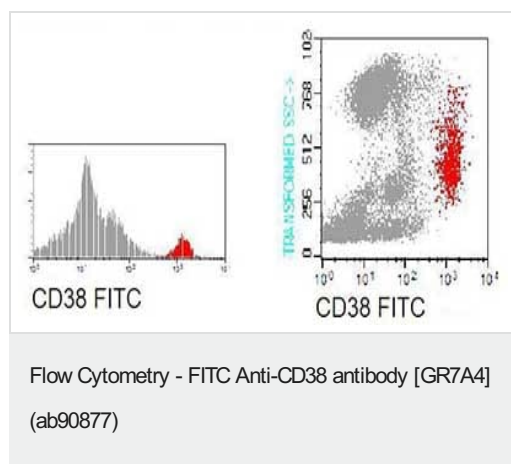
**The Abpromise guarantee**      **Abpromise保証は、次のテスト済みアプリケーションにおけるab90877の使用に適用されず**  
 アプリケーションノートには、推奨の開始希釈率がありますが、適切な希釈率につきましてはご確認ください。

アプリケーション	Abreviews	特記事項
Flow Cyt		Use 20µl for 10 <sup>6</sup> cells. <b>ab91356</b> - Mouse monoclonal IgG1, is suitable for use as an isotype control with this antibody.

**ターゲット情報**

<b>機能</b>	Synthesizes cyclic ADP-ribose, a second messenger for glucose-induced insulin secretion. Also has cADPr hydrolase activity. Also moonlights as a receptor in cells of the immune system.
<b>組織特異性</b>	Expressed at high levels in pancreas, liver, kidney, brain, testis, ovary, placenta, malignant lymphoma and neuroblastoma.
<b>配列類似性</b>	Belongs to the ADP-ribosyl cyclase family.
<b>発生段階</b>	Preferentially expressed at both early and late stages of the B and T-cell maturation. It is also detected on erythroid and myeloid progenitors in bone marrow, where the level of surface expression was shown to decrease during differentiation of blast-forming unit E to colony-forming unit E.
<b>細胞内局在</b>	Membrane.
<b>製品の状態</b>	There are 2 isoforms produced by alternative splicing.

**画像**



Flow cytometry analysis of CD38 in a bone marrow sample from a Human donor using ab90877 at 20 µl/10<sup>6</sup> cells. CD38+ cells (plasma cells, activated T cells, monocytes, macrophages, dendritic cells) are represented in red.

**Please note:** All products are "FOR RESEARCH USE ONLY. NOT FOR USE IN DIAGNOSTIC PROCEDURES"

**Our Abpromise to you: Quality guaranteed and expert technical support**

- Replacement or refund for products not performing as stated on the datasheet
- Valid for 12 months from date of delivery

- Response to your inquiry within 24 hours
- We provide support in Chinese, English, French, German, Japanese and Spanish
- Extensive multi-media technical resources to help you
- We investigate all quality concerns to ensure our products perform to the highest standards

If the product does not perform as described on this datasheet, we will offer a refund or replacement. For full details of the Abpromise, please visit <https://www.abcam.co.jp/abpromise> or contact our technical team.

### **Terms and conditions**

---

- Guarantee only valid for products bought direct from Abcam or one of our authorized distributors