

FITC Anti-CD34 antibody [QBEND/10] ab78165

★★★★★ [1 Abreviews](#) [9 References](#) [画像数 1](#)

製品の概要

製品名	FITC Anti-CD34 antibody [QBEND/10]
製品の詳細	FITC Mouse monoclonal [QBEND/10] to CD34
由来種	Mouse
標識	FITC. Ex: 493nm, Em: 528nm
特異性	ab78165 recognizes CD34, a heavily glycosylated transmembrane protein, gp 105-120 kDa, expressed on immature human haemopoietic precursor cells, capillary endothelial cells and human myeloid cells in the following categories: subsets of CFU-GEMM and BFU-E, all CFU-GM, granulocyte precursors, monocytes, myeloid leukaemias. ab78165 recognizes the class II epitope showing resistance to neuraminidase enzyme cleavage.
アプリケーション	適用あり: Flow Cyt
種交差性	交差種: Human 非交差種: Rat, Sheep, Cow, Dog
免疫原	Tissue, cells or virus corresponding to Human CD34. Human endothelial vesicles
ポジティブ・コントロール	KG-1 cell line
特記事項	<p>The Life Science industry has been in the grips of a reproducibility crisis for a number of years. Abcam is leading the way in addressing this with our range of recombinant monoclonal antibodies and knockout edited cell lines for gold-standard validation. Please check that this product meets your needs before purchasing.</p> <p>If you have any questions, special requirements or concerns, please send us an inquiry and/or contact our Support team ahead of purchase. Recommended alternatives for this product can be found below, along with publications, customer reviews and Q&As</p>

製品の特性

製品の状態	Liquid
保存方法	Shipped at 4°C. Store at +4°C.
バッファー	Preservative: 0.065% Sodium azide Constituents: 0.1% BSA, PBS
精製度	Protein G purified
ポリ/モノ	モノクローナル

クローン名	QBEND/10
ミエローマ	NS0
アイソタイプ	IgG1

アプリケーション

The Abpromise guarantee **Abpromise保証は、次のテスト済みアプリケーションにおけるab78165の使用に適用されます**
 アプリケーションノートには、推奨の開始希釈率がありますが、適切な希釈率につきましてはご確認ください。

アプリケーション	Abreviews	特記事項
Flow Cyt	★★★★★ (1)	

追加情報

Flow Cyt: Use 10µl per test.

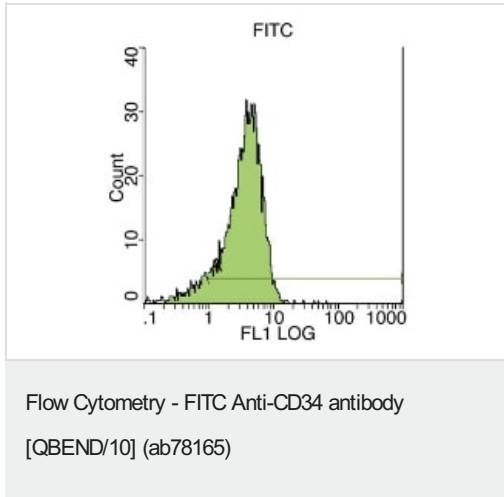
Not yet tested in other applications.

Optimal dilutions/concentrations should be determined by the end user.

ターゲット情報

機能	Possible adhesion molecule with a role in early hematopoiesis by mediating the attachment of stem cells to the bone marrow extracellular matrix or directly to stromal cells. Could act as a scaffold for the attachment of lineage specific glycans, allowing stem cells to bind to lectins expressed by stromal cells or other marrow components. Presents carbohydrate ligands to selectins.
組織特異性	Selectively expressed on hematopoietic progenitor cells and the small vessel endothelium of a variety of tissues.
配列類似性	Belongs to the CD34 family.
発生段階	On early hematopoietic progenitor cells.
翻訳後修飾	Highly glycosylated. Phosphorylated on serine residues by PKC.
細胞内局在	Membrane.

画像



Log fluorescence intensity profile of KG-1 cell line stained with ab78165 at 10ul per test.

Please note: All products are "FOR RESEARCH USE ONLY. NOT FOR USE IN DIAGNOSTIC PROCEDURES"

Our Abpromise to you: Quality guaranteed and expert technical support

- Replacement or refund for products not performing as stated on the datasheet
- Valid for 12 months from date of delivery
- Response to your inquiry within 24 hours
- We provide support in Chinese, English, French, German, Japanese and Spanish
- Extensive multi-media technical resources to help you
- We investigate all quality concerns to ensure our products perform to the highest standards

If the product does not perform as described on this datasheet, we will offer a refund or replacement. For full details of the Abpromise, please visit <https://www.abcam.co.jp/abpromise> or contact our technical team.

Terms and conditions

- Guarantee only valid for products bought direct from Abcam or one of our authorized distributors