

FITC Anti-CD3 epsilon antibody [C363.29B] ab24948

3 References [画像数 2](#)

製品の概要

製品名	FITC Anti-CD3 epsilon antibody [C363.29B]
製品の詳細	FITC Rat monoclonal [C363.29B] to CD3 epsilon
由来種	Rat
標識	FITC. Ex: 493nm, Em: 528nm
アプリケーション	適用あり: Flow Cyt
種交差性	交差種: Mouse
免疫原	Tissue, cells or virus corresponding to Mouse CD3 epsilon. IL-4 producing Th2 cell lines including D10.
エピトープ	This antibody reacts with an epitope located in the epsilon chain of the CD3/TCR complex.
ポジティブ・コントロール	Flow Cyt: Cells from BALB/c mouse mesenteric lymph nodes. Mouse splenocytes.
特記事項	<p>The Life Science industry has been in the grips of a reproducibility crisis for a number of years. Abcam is leading the way in addressing this with our range of recombinant monoclonal antibodies and knockout edited cell lines for gold-standard validation. Please check that this product meets your needs before purchasing.</p> <p>If you have any questions, special requirements or concerns, please send us an inquiry and/or contact our Support team ahead of purchase. Recommended alternatives for this product can be found below, along with publications, customer reviews and Q&As</p>

製品の特性

製品の状態	Liquid
保存方法	Shipped at 4°C. Store at +4°C. Store In the Dark.
バッファー	pH: 7.4 Preservative: 0.1% Sodium azide Constituent: PBS
精製度	Affinity purified
ポリ/モノ	モノクローナル
クローン名	C363.29B
アイソタイプ	IgG2c
軽鎖の種類	kappa

アプリケーション

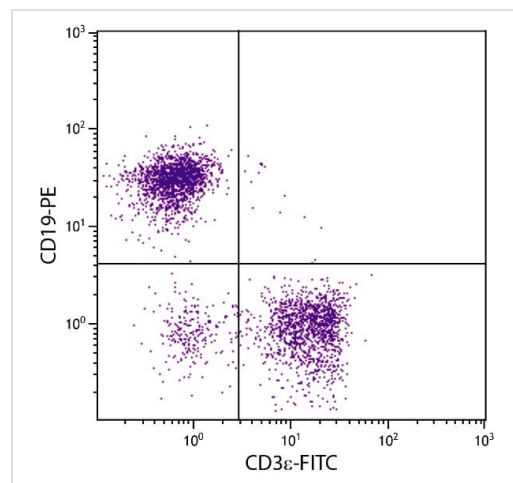
The Abpromise guarantee Abpromise保証は、次のテスト済みアプリケーションにおけるab24948の使用に適用されます
アプリケーションノートには、推奨の開始希釈率がありますが、適切な希釈率につきましてはご確認ください。

アプリケーション	Abreviews	特記事項
Flow Cyt		Use 3µg for 10 ⁶ cells. <i>In vitro</i> depletion of CD3+ cells and activation of T cells (accessory cells must be provided). ab114134 - Rat monoclonal IgG2c, is suitable for use as an isotype control with this antibody.

ターゲット情報

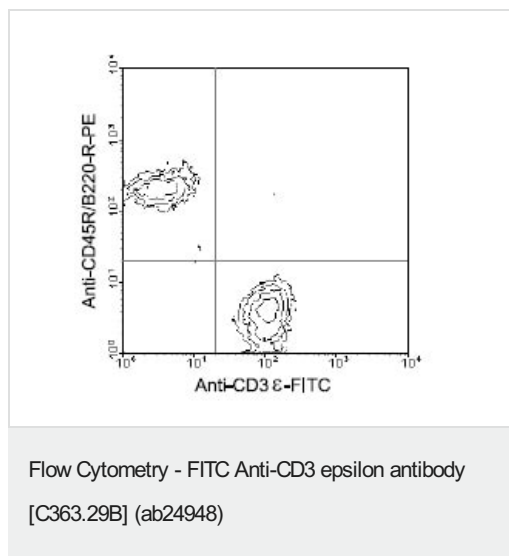
機能	The CD3 complex mediates signal transduction.
配列類似性	Contains 1 Ig-like (immunoglobulin-like) domain. Contains 1 ITAM domain.
細胞内局在	Membrane.

画像



Flow Cytometry analysis of C57BL/6 mouse splenocytes stained with Anti-CD3 epsilon antibody [C363.29B] (FITC) ab24948 (1 µg/10⁶ cells) and Rat Anti-Mouse CD19-PE.

Flow Cytometry - FITC Anti-CD3 epsilon antibody
[C363.29B] (ab24948)



Ab24948 (3 μ g for 10⁶ cells) and anti mouse CD45R/B220 RPE conjugate antibody doubly staining cells from BALB/c mesenteric lymph nodes, gated on small lymphocytes and analyzed using a flow cytometer.

Please note: All products are "FOR RESEARCH USE ONLY. NOT FOR USE IN DIAGNOSTIC PROCEDURES"

Our Abpromise to you: Quality guaranteed and expert technical support

- Replacement or refund for products not performing as stated on the datasheet
- Valid for 12 months from date of delivery
- Response to your inquiry within 24 hours
- We provide support in Chinese, English, French, German, Japanese and Spanish
- Extensive multi-media technical resources to help you
- We investigate all quality concerns to ensure our products perform to the highest standards

If the product does not perform as described on this datasheet, we will offer a refund or replacement. For full details of the Abpromise, please visit <https://www.abcam.co.jp/abpromise> or contact our technical team.

Terms and conditions

- Guarantee only valid for products bought direct from Abcam or one of our authorized distributors