


### FITC Anti-CD3 antibody [UCHT1] ab34275

★★★★☆ **5 Abreviews**   **11 References**   画像数 3

#### 製品の概要

製品名	FITC Anti-CD3 antibody [UCHT1]
製品の詳細	FITC Mouse monoclonal [UCHT1] to CD3
由来種	Mouse
標識	FITC. Ex: 493nm, Em: 528nm
アプリケーション	<b>適用あり:</b> Flow Cyt
種交差性	<b>交差種:</b> Human <b>交差が予測される動物種:</b> Chimpanzee 
免疫原	Tissue/ cell preparation (Human) -infant thymocytes and lymphocytes from a patient with Sezary Syndrome.
ポジティブ・コントロール	human peripheral blood lymphocytes
特記事項	<p>The Life Science industry has been in the grips of a reproducibility crisis for a number of years. Abcam is leading the way in addressing this with our range of recombinant monoclonal antibodies and knockout edited cell lines for gold-standard validation. Please check that this product meets your needs before purchasing.</p> <p>If you have any questions, special requirements or concerns, please send us an inquiry and/or contact our Support team ahead of purchase. Recommended alternatives for this product can be found below, along with publications, customer reviews and Q&amp;As</p>

#### 製品の特性

製品の状態	Liquid
保存方法	Shipped at 4°C. Store at +4°C. Do Not Freeze. Store undiluted.
バッファー	<p>pH: 7.20</p> <p>Preservative: 0.09% Sodium azide</p> <p>Constituents: 0.1% Gelatin, 0.14% Monobasic dihydrogen sodium phosphate, 0.87% Sodium chloride</p>
精製度	Affinity purified
特記事項(精製)	Purified from tissue culture supernatant
ポリ/モノ	モノクローナル
クローン名	UCHT1

ミエローマ  
アイソタイプ

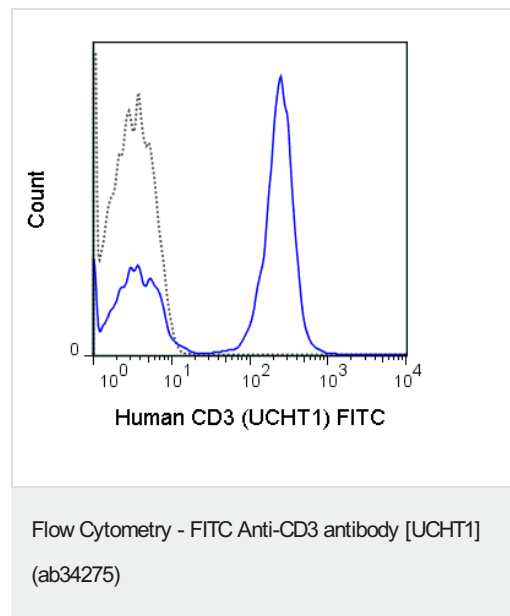
P3-NS1/1-Ag4-1  
IgG1

## アプリケーション

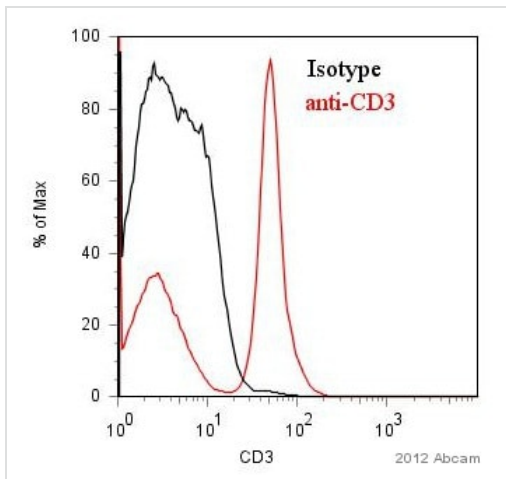
**The Abpromise guarantee** Abpromise保証は、 次のテスト済みアプリケーションにおけるab34275の使用に適用されます  
アプリケーションノートには、推奨の開始希釈率がありますが、適切な希釈率につきましてはご検討ください。

アプリケーション	Abreviews	特記事項
Flow Cyt	★★★★☆ (5)	Use at an assay dependent concentration. <b>ab91356</b> - Mouse monoclonal IgG1, is suitable for use as an isotype control with this antibody.

## 画像



Flow Cytometry analysis of Human peripheral blood lymphocytes staining CD3 with ab34275 at 5 $\mu$ L (1.0 $\mu$ g) concentration (solid line), and isotype control Mouse IgG1 (FITC) at 1.0 $\mu$ g (dotted line).

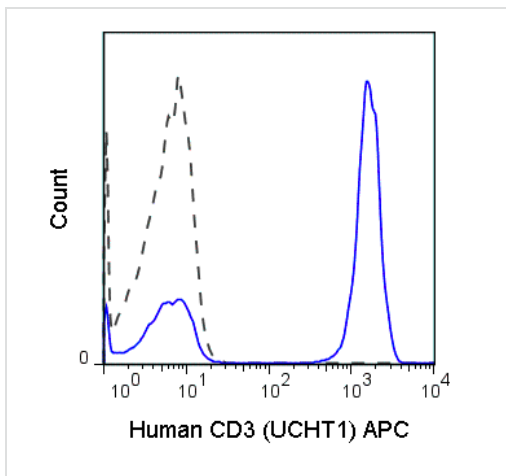


Flow Cytometry - FITC Anti-CD3 antibody [UCHT1]  
(ab34275)

This image is courtesy of an anonymous Abreview

ab34275 staining CD3 in Human PBMCs by Flow Cytometry. PBMCs were isolated from buffy coat after Ficoll preparation in PBS + 1% BSA and 0.01% sodium azide. The sample was incubated with the primary antibody (1/100 in PBS + 1% BSA and 0.01% sodium azide) for 1 hour at 4°C.

**Gating Strategy:** Live Lymphocytes.



Flow Cytometry - FITC Anti-CD3 antibody [UCHT1]  
(ab34275)

FACS analysis of CD3 expression in human peripheral blood lymphocytes stained with ab34275 (solid line) at 0.25 ug and 0.25 ug isotype control (dashed line).

**Please note:** All products are "FOR RESEARCH USE ONLY. NOT FOR USE IN DIAGNOSTIC PROCEDURES"

### Our Abpromise to you: Quality guaranteed and expert technical support

- Replacement or refund for products not performing as stated on the datasheet
- Valid for 12 months from date of delivery
- Response to your inquiry within 24 hours
- We provide support in Chinese, English, French, German, Japanese and Spanish
- Extensive multi-media technical resources to help you
- We investigate all quality concerns to ensure our products perform to the highest standards

If the product does not perform as described on this datasheet, we will offer a refund or replacement. For full details of the Abpromise, please visit <https://www.abcam.co.jp/abpromise> or contact our technical team.

## Terms and conditions

---

- Guarantee only valid for products bought direct from Abcam or one of our authorized distributors