

FITC Anti-CD24 antibody [SN3] ab30350

★★★★★ [1 Abreviews](#) [17 References](#) [画像数 1](#)

製品の概要

製品名	FITC Anti-CD24 antibody [SN3]
製品の詳細	FITC Mouse monoclonal [SN3] to CD24
由来種	Mouse
標識	FITC. Ex: 493nm, Em: 528nm
アプリケーション	適用あり: Flow Cyt
種交差性	交差種: Human
免疫原	Glycoproteins purified from human NALM-1 cell line
特記事項	<p>The Life Science industry has been in the grips of a reproducibility crisis for a number of years. Abcam is leading the way in addressing this with our range of recombinant monoclonal antibodies and knockout edited cell lines for gold-standard validation. Please check that this product meets your needs before purchasing.</p> <p>If you have any questions, special requirements or concerns, please send us an inquiry and/or contact our Support team ahead of purchase. Recommended alternatives for this product can be found below, along with publications, customer reviews and Q&As</p>

製品の特性

製品の状態	Liquid
保存方法	Shipped at 4°C. Store at +4°C.
バッファー	pH: 7.40 Preservative: 0.09% Sodium azide Constituents: PBS, 1% BSA
精製度	Protein G purified
ポリ/モノ	モノクローナル
クローン名	SN3
アイソタイプ	IgG1

アプリケーション

The Abpromise guarantee

Abpromise保証は、次のテスト済みアプリケーションにおけるab30350の使用に適用されます

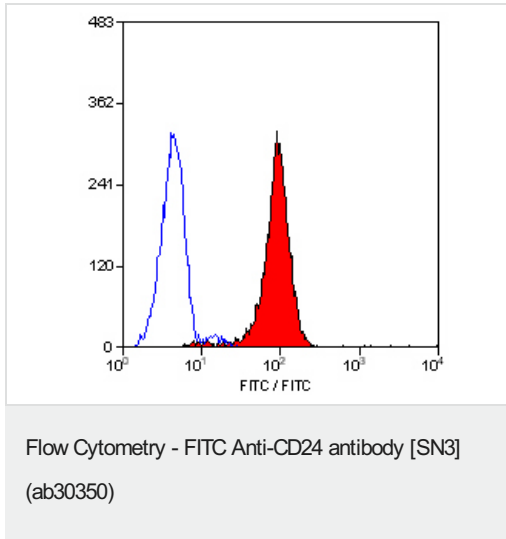
アプリケーションノートには、推奨の開始希釈率がありますが、適切な希釈率につきましてはご確認ください。

アプリケーション	Abreviews	特記事項
Flow Cyt		Use 20µl for 10 ⁶ cells. 1/1 - 1/10. Use 10µl of the above dilution for 10 ⁶ cells or 100ul whole blood. ab91356 - Mouse monoclonal IgG1, is suitable for use as an isotype control with this antibody.

ターゲット情報

機能	Modulates B-cell activation responses. Signaling could be triggered by the binding of a lectin-like ligand to the CD24 carbohydrates, and transduced by the release of second messengers derived from the GPI-anchor. Promotes AG-dependent proliferation of B-cells, and prevents their terminal differentiation into antibody-forming cells.
組織特異性	B-cells. Expressed in a number of B-cell lines including P32/SH and Namalwa. Expressed in erythroleukemia cell and small cell lung carcinoma cell lines. Also expressed on the surface of T-cells.
関連疾患	Genetic variations in CD24 are associated with susceptibility to multiple sclerosis (MS) [MIM:126200]. A multifactorial, inflammatory, demyelinating disease of the central nervous system. Sclerotic lesions are characterized by perivascular infiltration of monocytes and lymphocytes and appear as indurated areas in pathologic specimens (sclerosis in plaques). The pathological mechanism is regarded as an autoimmune attack of the myelin sheat, mediated by both cellular and humoral immunity. Clinical manifestations include visual loss, extra-ocular movement disorders, paresthesias, loss of sensation, weakness, dysarthria, spasticity, ataxia and bladder dysfunction. Genetic and environmental factors influence susceptibility to the disease. Note=Polymorphisms in CD24 may act as a genetic modifier for susceptibility and progression of MS in some populations, perhaps by affecting the efficiency of CD24 expression on the cell surface.
配列類似性	Belongs to the CD24 family.
翻訳後修飾	Extensively O-glycosylated.
細胞内局在	Cell membrane.

画像



Staining of human peripheral blood granulocytes with SN3 mouse monoclonal anti-human CD24 FITC conjugated (ab30350)

Please note: All products are "FOR RESEARCH USE ONLY. NOT FOR USE IN DIAGNOSTIC PROCEDURES"

Our Abpromise to you: Quality guaranteed and expert technical support

- Replacement or refund for products not performing as stated on the datasheet
- Valid for 12 months from date of delivery
- Response to your inquiry within 24 hours
- We provide support in Chinese, English, French, German, Japanese and Spanish
- Extensive multi-media technical resources to help you
- We investigate all quality concerns to ensure our products perform to the highest standards

If the product does not perform as described on this datasheet, we will offer a refund or replacement. For full details of the Abpromise, please visit <https://www.abcam.co.jp/abpromise> or contact our technical team.

Terms and conditions

- Guarantee only valid for products bought direct from Abcam or one of our authorized distributors