

FITC Anti-CD20 antibody [2H7] ab51792

画像数 1

製品の概要

製品名	FITC Anti-CD20 antibody [2H7]
製品の詳細	FITC Mouse monoclonal [2H7] to CD20
由来種	Mouse
標識	FITC. Ex: 493nm, Em: 528nm
アプリケーション	適用あり: Flow Cyt
種交差性	交差種: Human
免疫原	Tissue, cells or virus corresponding to CD20.
エピトープ	The epitope recognised by this antibody has been mapped to the following sequence which is found in the large extracellular loop of human CD20: YNCEPANPSEKNSPST
特記事項	<p>The Life Science industry has been in the grips of a reproducibility crisis for a number of years. Abcam is leading the way in addressing this with our range of recombinant monoclonal antibodies and knockout edited cell lines for gold-standard validation. Please check that this product meets your needs before purchasing.</p> <p>If you have any questions, special requirements or concerns, please send us an inquiry and/or contact our Support team ahead of purchase. Recommended alternatives for this product can be found below, along with publications, customer reviews and Q&As</p>

製品の特性

製品の状態	Liquid
保存方法	Shipped at 4°C. Store at +4°C short term (1-2 weeks). Upon delivery aliquot. Store at +4°C. Avoid freeze / thaw cycle. Do Not Freeze. Store In the Dark.
バッファー	pH: 7.40 Preservative: 0.09% Sodium azide Constituents: 0.16% Sodium phosphate, 0.87% Sodium chloride, 0.1% Gelatin
精製度	Affinity purified
ポリ/モノ	モノクローナル
クローン名	2H7
アイソタイプ	IgG2b

アプリケーション

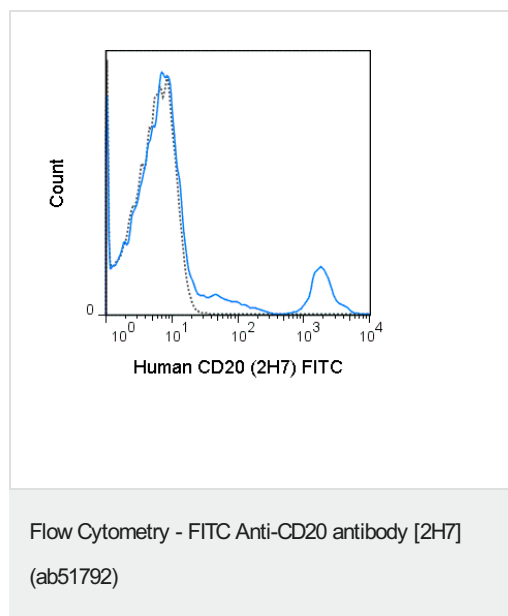
The Abpromise guarantee Abpromise保証は、次のテスト済みアプリケーションにおけるab51792の使用に適用されます
アプリケーションノートには、推奨の開始希釈率がありますが、適切な希釈率につきましてはご検討ください。

アプリケーション	Abreviews	特記事項
Flow Cyt		Use 5µl for 10 ⁵⁻⁸ cells. The antibody has been diluted for use at 5 µl (0.25 µg) per test, defined as the amount of antibody that will stain a cell sample in a final volume of approximately 100 µl.

ターゲット情報

機能	This protein may be involved in the regulation of B-cell activation and proliferation.
組織特異性	Expressed on B-cells.
関連疾患	Defects in MS4A1 are the cause of immunodeficiency common variable type 5 (CVID5) [MIM:613495]; also called antibody deficiency due to CD20 defect. CVID5 is a primary immunodeficiency characterized by antibody deficiency, hypogammaglobulinemia, recurrent bacterial infections and an inability to mount an antibody response to antigen. The defect results from a failure of B-cell differentiation and impaired secretion of immunoglobulins; the numbers of circulating B cells is usually in the normal range, but can be low.
配列類似性	Belongs to the MS4A family.
翻訳後修飾	Phosphorylated. Might be functionally regulated by protein kinase(s).
細胞内局在	Membrane.

画像



Flow cytometry analysis showing human peripheral blood lymphocytes stained with ab51792 (solid line) and isotype control antibody was FITC Mouse IgG2b (dashed line).

Please note: All products are "FOR RESEARCH USE ONLY. NOT FOR USE IN DIAGNOSTIC PROCEDURES"

Our Abpromise to you: Quality guaranteed and expert technical support

- Replacement or refund for products not performing as stated on the datasheet
- Valid for 12 months from date of delivery
- Response to your inquiry within 24 hours

- We provide support in Chinese, English, French, German, Japanese and Spanish
- Extensive multi-media technical resources to help you
- We investigate all quality concerns to ensure our products perform to the highest standards

If the product does not perform as described on this datasheet, we will offer a refund or replacement. For full details of the Abpromise, please visit <https://www.abcam.co.jp/abpromise> or contact our technical team.

Terms and conditions

- Guarantee only valid for products bought direct from Abcam or one of our authorized distributors