

FITC Anti-CD16 antibody [GRM1] ab115920

画像数 1

製品の概要

製品名	FITC Anti-CD16 antibody [GRM1]
製品の詳細	FITC Mouse monoclonal [GRM1] to CD16
由来種	Mouse
標識	FITC. Ex: 493nm, Em: 528nm
アプリケーション	適用あり: Flow Cyt
種交差性	交差種: Human
免疫原	Cells of Human Polymorphocytic leukemic
ポジティブ・コントロール	Human Normal Peripheral Blood Cells.
特記事項	<p>The Life Science industry has been in the grips of a reproducibility crisis for a number of years. Abcam is leading the way in addressing this with our range of recombinant monoclonal antibodies and knockout edited cell lines for gold-standard validation. Please check that this product meets your needs before purchasing.</p> <p>If you have any questions, special requirements or concerns, please send us an inquiry and/or contact our Support team ahead of purchase. Recommended alternatives for this product can be found below, along with publications, customer reviews and Q&As</p>

製品の特性

製品の状態	Liquid
保存方法	Shipped at 4°C. Store at +4°C.
バッファー	<p>pH: 7.2</p> <p>Preservative: 0.09% Sodium azide</p> <p>Constituents: PBS, BSA</p>
精製度	Protein A purified
ポリ/モノ	モノクローナル
クローン名	GRM1
アイソタイプ	IgG2a

アプリケーション

The Abpromise guarantee

Abpromise保証は、次のテスト済みアプリケーションにおけるab115920の使用に適用されます

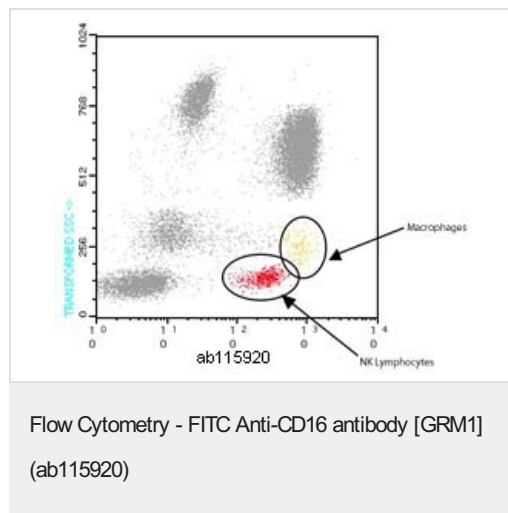
アプリケーションノートには、推奨の開始希釈率がありますが、適切な希釈率につきましてはご確認ください。

アプリケーション	Abreviews	特記事項
Flow Cyt		Use 20µl for 10 ⁶ cells. ab91362 - Mouse monoclonal IgG2a, is suitable for use as an isotype control with this antibody.

ターゲット情報

機能	Receptor for the Fc region of IgG. Binds complexed or aggregated IgG and also monomeric IgG. Mediates antibody-dependent cellular cytotoxicity (ADCC) and other antibody-dependent responses, such as phagocytosis.
組織特異性	Expressed on natural killer cells, macrophages, subpopulation of T-cells, immature thymocytes and placental trophoblasts.
配列類似性	Contains 2 Ig-like C2-type (immunoglobulin-like) domains.
翻訳後修飾	Glycosylated. Contains high mannose- and complex-type oligosaccharides. The soluble form is produced by a proteolytic cleavage.
細胞内局在	Cell membrane. Secreted. Exists also as a soluble receptor.

画像



ab115920 at 20µl/10⁶ cell staining CD16 in normal Human peripheral blood cells by Flow Cytometry.

Please note: All products are "FOR RESEARCH USE ONLY. NOT FOR USE IN DIAGNOSTIC PROCEDURES"

Our Abpromise to you: Quality guaranteed and expert technical support

- Replacement or refund for products not performing as stated on the datasheet
- Valid for 12 months from date of delivery

- Response to your inquiry within 24 hours
- We provide support in Chinese, English, French, German, Japanese and Spanish
- Extensive multi-media technical resources to help you
- We investigate all quality concerns to ensure our products perform to the highest standards

If the product does not perform as described on this datasheet, we will offer a refund or replacement. For full details of the Abpromise, please visit <https://www.abcam.co.jp/abpromise> or contact our technical team.

Terms and conditions

- Guarantee only valid for products bought direct from Abcam or one of our authorized distributors