

FITC Anti-CD116 antibody [4H1] ab95684

1 [References](#) **2** [画像数](#)

製品の概要

製品名	FITC Anti-CD116 antibody [4H1]
製品の詳細	FITC Mouse monoclonal [4H1] to CD116
由来種	Mouse
標識	FITC. Ex: 493nm, Em: 528nm
アプリケーション	適用あり: Flow Cyt, ICC/IF
種交差性	交差種: Human
免疫原	Tissue, cells or virus corresponding to Human CD116. CD116-transfected COS cells.
ポジティブ・コントロール	Normal human peripheral blood cells/leukocytes.
特記事項	<p>The Life Science industry has been in the grips of a reproducibility crisis for a number of years. Abcam is leading the way in addressing this with our range of recombinant monoclonal antibodies and knockout edited cell lines for gold-standard validation. Please check that this product meets your needs before purchasing.</p> <p>If you have any questions, special requirements or concerns, please send us an inquiry and/or contact our Support team ahead of purchase. Recommended alternatives for this product can be found below, along with publications, customer reviews and Q&As</p>

製品の特性

製品の状態	Liquid
保存方法	Shipped at 4°C. Store at +4°C.
バッファー	<p>pH: 7.20</p> <p>Preservative: 0.09% Sodium azide</p> <p>Constituents: 0.2% BSA, 0.87% Sodium chloride, PBS</p>
精製度	Protein G purified
ポリ/モノ	モノクローナル
クローン名	4H1
アイソタイプ	IgG1
軽鎖の種類	kappa

アプリケーション

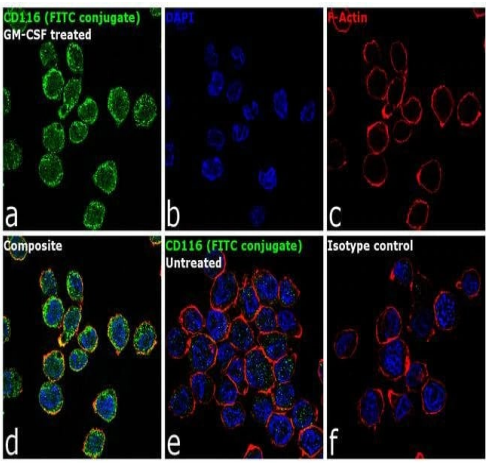
The Abpromise guarantee Abpromise保証は、次のテスト済みアプリケーションにおけるab95684の使用に適用されます
アプリケーションノートには、推奨の開始希釈率がありますが、適切な希釈率につきましてはご確認ください。

アプリケーション	Abreviews	特記事項
Flow Cyt		Use 5µl for 10 ⁶ cells. ab106163 - Mouse monoclonal IgG1, is suitable for use as an isotype control with this antibody.
ICC/IF		1/100.

ターゲット情報

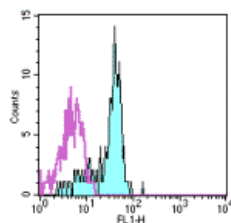
機能	Low affinity receptor for granulocyte-macrophage colony-stimulating factor. Transduces a signal that results in the proliferation, differentiation, and functional activation of hematopoietic cells.
関連疾患	Defects in CSF2RA are the cause of pulmonary surfactant metabolism dysfunction type 4 (SMDP4) [MIM:300770]. A rare lung disorder due to impaired surfactant homeostasis. It is characterized by alveolar filling with floccular material that stains positive using the periodic acid-Schiff method and is derived from surfactant phospholipids and protein components. Excessive lipoproteins accumulation in the alveoli results in severe respiratory distress.
配列類似性	Belongs to the type I cytokine receptor family. Type 5 subfamily.
ドメイン	The WSXWS motif appears to be necessary for proper protein folding and thereby efficient intracellular transport and cell-surface receptor binding. The box 1 motif is required for JAK interaction and/or activation.
細胞内局在	Secreted and Cell membrane.

画像



Immunocytochemistry/ Immunofluorescence - FITC
Anti-CD116 antibody [4H1] (ab95684)

Immunofluorescence analysis of CD116 was performed using 70% confluent log phase THP-1 cells treated with 10 ng of GM-CSF for 15 minutes. The cells were fixed with 4% paraformaldehyde for 10 minutes, permeabilized with 0.1% Triton™ X-100 for 10 minutes, and blocked with 1% BSA for 1 hour at room temperature. The cells were labeled with CD116, FITC, using ab95684 at 1:100 dilution in 0.1% BSA and incubated at 4 degree Celsius overnight (Panel a: green). Nuclei (Panel b: blue) were stained with SlowFade® Gold Antifade Mountant with DAPI. F-actin (Panel c: red) was stained with Rhodamine Phalloidin (1:300). Panel d represents the merged image showing membrane localization. Panel e shows untreated cells with less membrane signal. Panel f represents the isotype control. The images were captured at 60X magnification.



Flow Cytometry - FITC Anti-CD116 antibody [4H1]
(ab95684)

Flow cytometry staining of normal Human peripheral blood cells with Mouse IgG1 ? Isotype Control FITC (open histogram) or 20µl ab95684 (filled histogram). Cells in the monocyte gate were used for analysis.

Please note: All products are "FOR RESEARCH USE ONLY. NOT FOR USE IN DIAGNOSTIC PROCEDURES"

Our Abpromise to you: Quality guaranteed and expert technical support

- Replacement or refund for products not performing as stated on the datasheet
- Valid for 12 months from date of delivery
- Response to your inquiry within 24 hours
- We provide support in Chinese, English, French, German, Japanese and Spanish
- Extensive multi-media technical resources to help you
- We investigate all quality concerns to ensure our products perform to the highest standards

If the product does not perform as described on this datasheet, we will offer a refund or replacement. For full details of the Abpromise, please visit <https://www.abcam.co.jp/abpromise> or contact our technical team.

Terms and conditions

- Guarantee only valid for products bought direct from Abcam or one of our authorized distributors