

### FITC Anti-Biotin antibody ab53469

★★★★★ [1 Abreviews](#) [4 References](#) [画像数 1](#)

#### 製品の概要

製品名	FITC Anti-Biotin antibody
製品の詳細	FITC Rabbit polyclonal to Biotin
由来種	Rabbit
標識	FITC. Ex: 493nm, Em: 528nm
アプリケーション	<b>適用あり:</b> ICC/IF
種交差性	<b>交差種:</b> Species independent
免疫原	d-Biotin conjugated to KLH
特記事項	<p>Fluorescein isothionate; Ab/FITC ratio=approximately 1/20.</p> <p>The Life Science industry has been in the grips of a reproducibility crisis for a number of years. Abcam is leading the way in addressing this with our range of recombinant monoclonal antibodies and knockout edited cell lines for gold-standard validation. Please check that this product meets your needs before purchasing.</p> <p>If you have any questions, special requirements or concerns, please send us an inquiry and/or contact our Support team ahead of purchase. Recommended alternatives for this product can be found below, along with publications, customer reviews and Q&amp;As</p>

#### 製品の特性

製品の状態	Lyophilized:1. Centrifuge the tube at 5000 rpm for 30 seconds to deposit the lyophilized powder to the tube bottom; 2. Add 100 uL of distilled water and shake gently for 10 minutes until the powder is completely dissolved; 3. Add 900 uL of 50% glycerol (in distilled water) and shake gently for 5 minutes until all liquid is completely mixed.
保存方法	Shipped at 4°C. Store at +4°C.
バッファー	pH: 6 Constituents: 50% Glycerol (glycerin, glycerine), PBS
精製度	Protein A purified
ポリ/モノ	ポリクローナル
アイソタイプ	IgG

#### アプリケーション

## The Abpromise guarantee

**Abpromise保証は、次のテスト済みアプリケーションにおけるab53469の使用に適用されます**

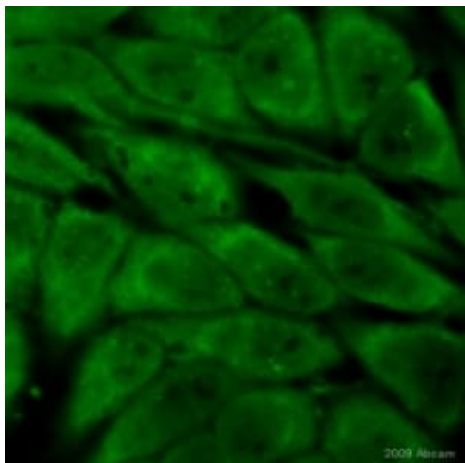
アプリケーションノートには、推奨の開始希釈率がありますが、適切な希釈率につきましてはご検討ください。

アプリケーション	Abreviews	特記事項
ICC/IF	★★★★★ (1)	1/100.

## ターゲット情報

**関連性** Biotin is a water soluble vitamin, generally classified as a B complex vitamin, also called vitamin B4. After the initial discovery of biotin, nearly forty years of research were required to establish it as a vitamin. Biotin is required by all organisms but can only be synthesized by bacteria, yeasts, molds, algae, and some plant species. Biotin is required as prosthetic group of enzymes involved in incorporation of carbon dioxide into organic compounds. Biotin has a MW of 244 Da.

## 画像



ab53469 staining Biotin in human ovarian cells by Immunocytochemistry/ Immunofluorescence. Cells were fixed with formaldehyde, permeabilized with 0.1% Triton ×100 in PBS and blocking with 5% serum for 30min at 23°C was performed. Samples were incubated with primary antibody (1/100) for 1 hour at 23°C.

Immunocytochemistry/ Immunofluorescence - FITC

Anti-Biotin antibody (ab53469)

This image is a courtesy of Anonymous Abreview

**Please note:** All products are "FOR RESEARCH USE ONLY. NOT FOR USE IN DIAGNOSTIC PROCEDURES"

## Our Abpromise to you: Quality guaranteed and expert technical support

- Replacement or refund for products not performing as stated on the datasheet
- Valid for 12 months from date of delivery
- Response to your inquiry within 24 hours
- We provide support in Chinese, English, French, German, Japanese and Spanish
- Extensive multi-media technical resources to help you
- We investigate all quality concerns to ensure our products perform to the highest standards

If the product does not perform as described on this datasheet, we will offer a refund or replacement. For full details of the Abpromise, please visit <https://www.abcam.co.jp/abpromise> or contact our technical team.

#### **Terms and conditions**

---

- Guarantee only valid for products bought direct from Abcam or one of our authorized distributors