


FITC Anti-alpha Tubulin antibody [DM1A] - Microtubule Marker ab64503

★★★★★ [6 Abreviews](#) [17 References](#) [画像数 2](#)

製品の概要

製品名	FITC Anti-alpha Tubulin antibody [DM1A] - Microtubule Marker
製品の詳細	FITC Mouse monoclonal [DM1A] to alpha Tubulin - Microtubule Marker
由来種	Mouse
標識	FITC. Ex: 493nm, Em: 528nm
アプリケーション	適用あり: ICC/IF, Flow Cyt (Intra)
種交差性	交差種: Mouse, Human 交差が予測される動物種: Rat, Chicken, Guinea pig, Cow, Dog, Pig, Xenopus laevis, Gerbil 
免疫原	Full length native protein (purified) corresponding to alpha Tubulin.
エピトープ	aa426-450. Ab64503 specifically recognizes an epitope in the carboxy-terminal part of alpha-tubulin.
ポジティブ・コントロール	ICC/IF: HeLa cells. IHC-Fr: Xenopus laevis stage 36 tissue. Flow Cyt (Intra): HeLa cells. Cultured human fibroblasts, baby hamster kidney (BHK) cells.
特記事項	<p>The Life Science industry has been in the grips of a reproducibility crisis for a number of years. Abcam is leading the way in addressing this with our range of recombinant monoclonal antibodies and knockout edited cell lines for gold-standard validation. Please check that this product meets your needs before purchasing.</p> <p>If you have any questions, special requirements or concerns, please send us an inquiry and/or contact our Support team ahead of purchase. Recommended alternatives for this product can be found below, along with publications, customer reviews and Q&As</p>

製品の特性

製品の状態	Liquid
保存方法	Shipped at 4°C. Store at +4°C short term (1-2 weeks). Store at -20°C. Avoid freeze / thaw cycle. Store In the Dark.
バッファー	Preservative: 0.02% Sodium azide Constituents: PBS, 30% Glycerol (glycerin, glycerine), 1% BSA
精製度	IgG fraction

ポリ/モノ	モノクローナル
クローン名	DM1A
アイソタイプ	IgG1
軽鎖の種類	kappa

アプリケーション

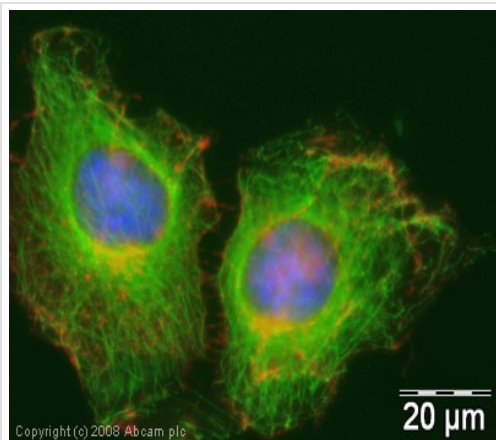
The Abpromise guarantee **Abpromise保証は、次のテスト済みアプリケーションにおけるab64503の使用に適用されます**
 アプリケーションノートには、推奨の開始希釈率がありますが、適切な希釈率につきましてはご確認ください。

アプリケーション	Abreviews	特記事項
ICC/IF	★★★★★ (4)	Use a concentration of 1 µg/ml.
Flow Cyt (Intra)		Use 5.1µl for 10 ⁶ cells. ab106163 - Mouse monoclonal IgG1, is suitable for use as an isotype control with this antibody.

ターゲット情報

機能	Tubulin is the major constituent of microtubules. It binds two moles of GTP, one at an exchangeable site on the beta chain and one at a non-exchangeable site on the alpha chain.
配列類似性	Belongs to the tubulin family.
翻訳後修飾	Some glutamate residues at the C-terminus are polyglutamylated. This modification occurs exclusively on glutamate residues and results in polyglutamate chains on the gamma-carboxyl group. Also monoglycylated but not polyglycylated due to the absence of functional TTLL10 in human. Monoglycylation is mainly limited to tubulin incorporated into axonemes (cilia and flagella) whereas glutamylation is prevalent in neuronal cells, centrioles, axonemes, and the mitotic spindle. Both modifications can coexist on the same protein on adjacent residues, and lowering glycylation levels increases polyglutamylated, and reciprocally. The precise function of such modifications is still unclear but they regulate the assembly and dynamics of axonemal microtubules. Acetylation of alpha chains at Lys-40 stabilizes microtubules and affects affinity and processivity of microtubule motors. This modification has a role in multiple cellular functions, ranging from cell motility, cell cycle progression or cell differentiation to intracellular trafficking and signaling.
細胞内局在	Cytoplasm > cytoskeleton.

画像



Immunocytochemistry/ Immunofluorescence - FITC
Anti-alpha Tubulin antibody [DM1A] - Microtubule
Marker (ab64503)

ICC/IF image of ab64503 stained human HeLa cells. The cells were methanol fixed (10 min), permeabilised in 0.1% PBS-Tween (20 min) and incubated with the antibody (ab64503, 1μg/ml, FITC conjugated (green)) for 1h at room temperature. 1% BSA / 10% normal goat serum / 0.3M glycine was used to block non-specific protein-protein interactions. Alexa Fluor® 594 WGA was used to label plasma membranes (red). DAPI was used to stain the cell nuclei (blue).

Flow Cytometry (Intracellular) - FITC Anti-alpha
Tubulin antibody [DM1A] - Microtubule Marker
(ab64503)

Overlay histogram showing HeLa cells stained with ab64503 (red line). The cells were fixed with 80% methanol (5 min) and then permeabilized with 0.1% PBS-Tween for 20 min. The cells were then incubated in 1x PBS / 10% normal goat serum / 0.3M glycine to block non-specific protein-protein interactions followed by the antibody (ab64503, 0.5μg/1x10⁶ cells) for 30 min at 22°C. Isotype control antibody (black line) was mouse IgG1 (1μg/1x10⁶ cells). Acquisition of >5,000 events was performed. This antibody gave a positive signal in HeLa cells fixed with 4% paraformaldehyde/permeabilized in 0.1% PBS-Tween used under the same conditions.

Please note: All products are "FOR RESEARCH USE ONLY. NOT FOR USE IN DIAGNOSTIC PROCEDURES"

Our Abpromise to you: Quality guaranteed and expert technical support

- Replacement or refund for products not performing as stated on the datasheet
- Valid for 12 months from date of delivery
- Response to your inquiry within 24 hours
- We provide support in Chinese, English, French, German, Japanese and Spanish
- Extensive multi-media technical resources to help you

- We investigate all quality concerns to ensure our products perform to the highest standards

If the product does not perform as described on this datasheet, we will offer a refund or replacement. For full details of the Abpromise, please visit <https://www.abcam.co.jp/abpromise> or contact our technical team.

Terms and conditions

- Guarantee only valid for products bought direct from Abcam or one of our authorized distributors