

### FITC Anti-2B4 antibody [244F4] ab95805

画像数 1

#### 製品の概要

製品名	FITC Anti-2B4 antibody [244F4]
製品の詳細	FITC Rat monoclonal [244F4] to 2B4
由来種	Rat
標識	FITC. Ex: 493nm, Em: 528nm
アプリケーション	<b>適用あり:</b> Flow Cyt
種交差性	<b>交差種:</b> Mouse
免疫原	The details of the immunogen for this antibody are not available.
ポジティブ・コントロール	BALB/c splenocytes.
特記事項	<p>ab95805 was generated against cell lines expressing CD244. It reacts with the C57BL/6 but not Balb/c due to polymorphisms present in the immunoglobulin V domain of the protein.</p> <p>The Life Science industry has been in the grips of a reproducibility crisis for a number of years. Abcam is leading the way in addressing this with our range of recombinant monoclonal antibodies and knockout edited cell lines for gold-standard validation. Please check that this product meets your needs before purchasing.</p> <p>If you have any questions, special requirements or concerns, please send us an inquiry and/or contact our Support team ahead of purchase. Recommended alternatives for this product can be found below, along with publications, customer reviews and Q&amp;As</p>

#### 製品の特性

製品の状態	Liquid
保存方法	Shipped at 4°C. Store at +4°C.
バッファー	<p>pH: 7.20</p> <p>Preservative: 0.09% Sodium azide</p> <p>Constituent: 0.87% Sodium chloride</p>
精製度	Protein G purified
一次抗体 備考	ab95805 was generated against cell lines expressing CD244. It reacts with the C57BL/6 but not Balb/c due to polymorphisms present in the immunoglobulin V domain of the protein.
ポリ/モノ	モノクローナル

クローン名	244F4
アイソタイプ	IgG2a

## アプリケーション

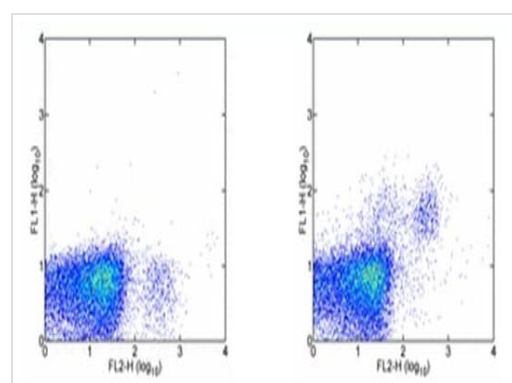
**The Abpromise guarantee** Abpromise保証は、 次のテスト済みアプリケーションにおけるab95805の使用に適用されます  
アプリケーションノートには、推奨の開始希釈率がありますが、適切な希釈率につきましてはご確認ください。

アプリケーション	Abreviews	特記事項
Flow Cyt		Use 0.25µg for 10 <sup>5-8</sup> cells. Use final volume of 100µl.  <b>ab18446</b> Rat monoclonal IgG2a is suitable for use as an

## ターゲット情報

機能	Modulate other receptor-ligand interactions to enhance leukocyte activation.
組織特異性	Expressed in spleen, PBL, followed by lung, liver, testis and small intestine. Expressed not only in NK cells, but also on monocytes and basophils.
配列類似性	Contains 2 Ig-like (immunoglobulin-like) domains.
細胞内局在	Membrane.

## 画像



Staining of BALB/c splenocytes with Anti-NK1-1 PE and 0.125 µg of Rat IgG2a Isotype Control FITC (left) or 0.125 µg of ab95805 (right). Cells in the lymphocyte gate were used for analysis.

Flow Cytometry - FITC Anti-2B4 antibody [244F4]  
(ab95805)

**Please note:** All products are "FOR RESEARCH USE ONLY. NOT FOR USE IN DIAGNOSTIC PROCEDURES"

### **Our Abpromise to you: Quality guaranteed and expert technical support**

---

- Replacement or refund for products not performing as stated on the datasheet
- Valid for 12 months from date of delivery
- Response to your inquiry within 24 hours
  
- We provide support in Chinese, English, French, German, Japanese and Spanish
- Extensive multi-media technical resources to help you
- We investigate all quality concerns to ensure our products perform to the highest standards

If the product does not perform as described on this datasheet, we will offer a refund or replacement. For full details of the Abpromise, please visit <https://www.abcam.co.jp/abpromise> or contact our technical team.

### **Terms and conditions**

---

- Guarantee only valid for products bought direct from Abcam or one of our authorized distributors