

Anti-Firefly Luciferase antibody [EPR17789] - N-terminal ab185923

リコンビナント RabMAb[®]

5 References [画像数 6](#)

製品の概要

製品名	Anti-Firefly Luciferase antibody [EPR17789] - N-terminal
製品の詳細	Rabbit monoclonal [EPR17789] to Firefly Luciferase - N-terminal
由来種	Rabbit
アプリケーション	適用あり: ICC/IF, WB, Flow Cyt
種交差性	交差種: Firefly 非交差種: Mouse, Rat
免疫原	Synthetic peptide. This information is proprietary to Abcam and/or its suppliers.
ポジティブ・コントロール	WB: Firefly Luciferase transfected HEK-293 whole cell lysate. ICC/IF: Firefly Luciferase transfected HEK-293T cells.
特記事項	This product is a recombinant monoclonal antibody, which offers several advantages including: <ul style="list-style-type: none">- High batch-to-batch consistency and reproducibility- Improved sensitivity and specificity- Long-term security of supply- Animal-free production For more information see here . Our RabMAb [®] technology is a patented hybridoma-based technology for making rabbit monoclonal antibodies. For details on our patents, please refer to RabMAb[®] patents .

製品の特性

製品の状態	Liquid
保存方法	Shipped at 4°C. Store at +4°C short term (1-2 weeks). Upon delivery aliquot. Store at -20°C long term. Avoid freeze / thaw cycle.
バッファー	pH: 7.2 Preservative: 0.01% Sodium azide Constituents: 59% PBS, 40% Glycerol (glycerin, glycerine), 0.05% BSA
精製度	Protein A purified
ポリ/モノ	モノクローナル

クローン名 EPR17789
アイソタイプ IgG

アプリケーション

The Abpromise guarantee **Abpromise保証は、** 次のテスト済みアプリケーションにおけるab185923の使用に適用されます
アプリケーションノートには、推奨の開始希釈率がありますが、適切な希釈率につきましてはご検討ください。

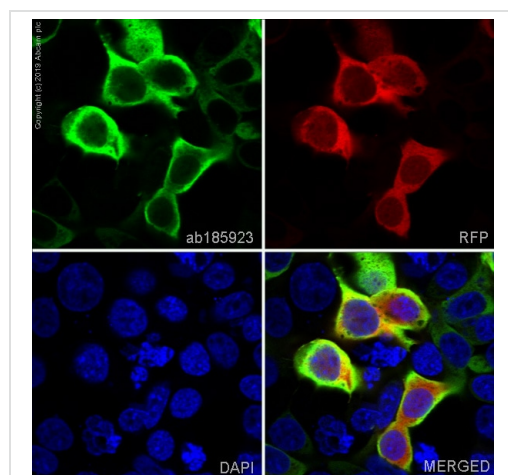
アプリケーション	Abreviews	特記事項
ICC/IF		1/500.
WB		1/2000. Detects a band of approximately 61 kDa (predicted molecular weight: 61 kDa).
Flow Cyt		Use at an assay dependent concentration.

ターゲット情報

関連性 Luciferase from the firefly has become one of the more widely used reporter proteins for the study of gene expression. Luciferase catalyzes a bioluminescent reaction which requires the substrate luciferin as well as Mg²⁺ and ATP. Mixing these reagents with the cell extract containing luciferase, results in a flash of light that decays rapidly. This light can be detected by a luminometer. The total light emission is proportional to the luciferase activity of the sample.

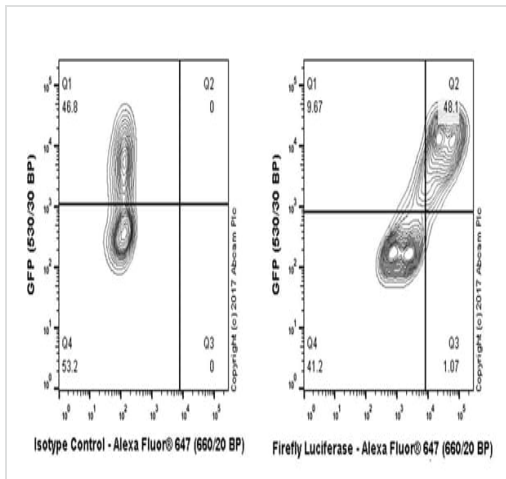
細胞内局在 Peroxisome

画像



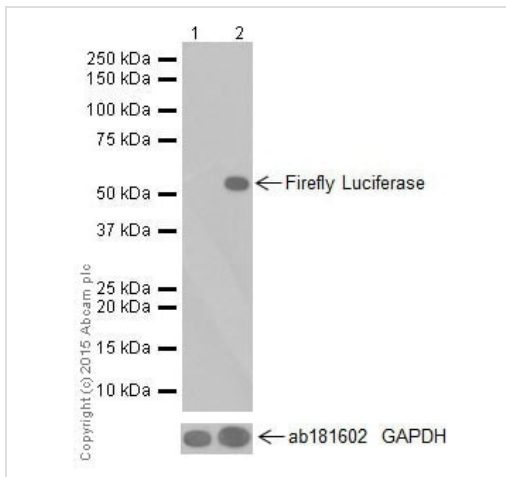
Immunofluorescent analysis of 4% paraformaldehyde-fixed, 0.1% Triton X-100 permeabilized HEK-293T (Human epithelial cells from embryonic kidney) cells transfected with Empty vector or Firefly Luciferase, labeling Firefly Luciferase with ab185923 at 1/500 dilution, followed by Goat anti-rabbit IgG (Alexa Fluor® 488) (**ab150077**) secondary antibody at 1/500 dilution (green). Nuclear staining on HEK293T cells transfected with Firefly Luciferase is observed. The nuclear counter stain is DAPI (blue).

Immunocytochemistry/ Immunofluorescence - Anti-Firefly Luciferase antibody [EPR17789] - N-terminal (ab185923)



Flow Cytometry - Anti-Firefly Luciferase antibody
[EPR17789] - N-terminal (ab185923)

Flow Cytometry analysis of 293T (Human epithelial cell line from embryonic kidney) transfected with GFP tagged Firefly Luciferase cells labeling Firefly Luciferase with purified ab185923 at 1/200 dilution (10ug/ml, Right panel). Cells were fixed with 4% paraformaldehyde and permeabilised with 90% methanol. A Goat anti rabbit IgG (Alexa Fluor® 647)(1/2000 dilution) was used as the secondary antibody. Rabbit monoclonal IgG (Left panel) was used as the isotype control.



Western blot - Anti-Firefly Luciferase antibody
[EPR17789] - N-terminal (ab185923)

All lanes : Anti-Firefly Luciferase antibody [EPR17789] - N-terminal (ab185923) at 1/2000 dilution

Lane 1 : Empty vector (vector control) transfected HEK293 (human embryonic kidney) whole cell lysate

Lane 2 : Firefly Luciferase transfected HEK293 (human embryonic kidney) whole cell lysate

Lysates/proteins at 10 µg per lane.

Secondary

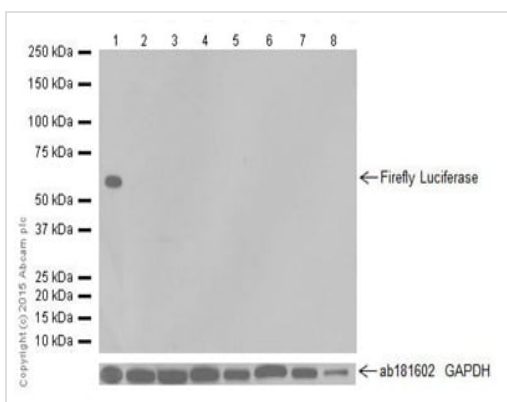
All lanes : Goat Anti-Rabbit IgG H&L (HRP) ([ab97051](#)) at 1/100000 dilution

Predicted band size: 61 kDa

Observed band size: 61 kDa

Exposure time: 30 seconds

Blocking and dilution buffer: 5% NFDM/TBST.



Western blot - Anti-Firefly Luciferase antibody [EPR17789] - N-terminal (ab185923)

All lanes : Anti-Firefly Luciferase antibody [EPR17789] - N-terminal (ab185923) at 1/1000 dilution

Lane 1 : Firefly Luciferase transfected HEK293 (human embryonic kidney) whole cell lysate at 10 µg

Lane 2 : HeLa (human cervix adenocarcinoma) whole cell lysate at 20 µg

Lane 3 : MCF-7 (human breast carcinoma) whole cell lysate at 20 µg

Lane 4 : Jurkat (human acute T cell leukemia) whole cell lysate at 20 µg

Lane 5 : SH-SY5Y (human neuroblastoma) whole cell lysate at 20 µg

Lane 6 : Human fetal heart lysate at 10 µg

Lane 7 : Human fetal kidney lysate at 10 µg

Lane 8 : Human fetal spleen lysate at 10 µg

Secondary

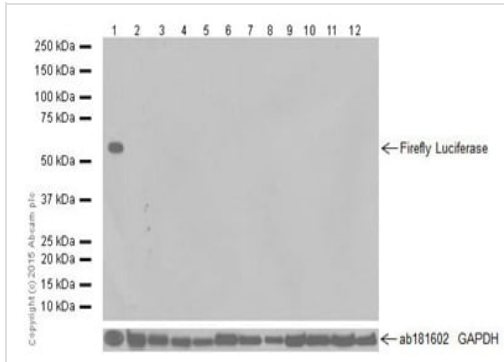
All lanes : Goat Anti-Rabbit IgG H&L (HRP) ([ab97051](#)) at 1/100000 dilution

Predicted band size: 61 kDa

Observed band size: 61 kDa

Exposure time: 3 minutes

Blocking and dilution buffer: 5% NFD/MBST.



Western blot - Anti-Firefly Luciferase antibody
[EPR17789] - N-terminal (ab185923)

All lanes : Anti-Firefly Luciferase antibody [EPR17789] - N-terminal (ab185923) at 1/1000 dilution

Lane 1 : Firefly Luciferase transfected HEK293 (human embryonic kidney) whole cell lysate

Lane 2 : Mouse brain lysate

Lane 3 : Mouse heart lysate

Lane 4 : Mouse kidney lysate

Lane 5 : Mouse spleen lysate

Lane 6 : Rat brain lysate

Lane 7 : Rat kidney lysate

Lane 8 : Rat spleen lysate

Lane 9 : C6 (rat glioma) whole cell lysate

Lane 10 : Raw264.7 (mouse abelson murine leukemia virus-induced tumor) whole cell lysate

Lane 11 : PC-12 (rat adrenal gland pheochromocytoma) whole cell lysate

Lane 12 : NIH/3T3 (mouse embryo) whole cell lysate

Lysates/proteins at 10 µg per lane.

Secondary

All lanes : Goat Anti-Rabbit IgG H&L (HRP) (**ab97051**) at 1/100000 dilution

Predicted band size: 61 kDa

Observed band size: 61 kDa

Exposure time: 3 minutes

Blocking and dilution buffer: 5% NFD/MTBST.

Why choose a recombinant antibody?



Research with confidence
Consistent and reproducible results



Long-term and scalable supply
Recombinant technology



Success from the first experiment
Confirmed specificity



Ethical standards compliant
Animal-free production

Anti-Firefly Luciferase antibody [EPR17789] - N-terminal (ab185923)

Please note: All products are "FOR RESEARCH USE ONLY. NOT FOR USE IN DIAGNOSTIC PROCEDURES"

Our Abpromise to you: Quality guaranteed and expert technical support

- Replacement or refund for products not performing as stated on the datasheet
- Valid for 12 months from date of delivery
- Response to your inquiry within 24 hours
- We provide support in Chinese, English, French, German, Japanese and Spanish
- Extensive multi-media technical resources to help you
- We investigate all quality concerns to ensure our products perform to the highest standards

If the product does not perform as described on this datasheet, we will offer a refund or replacement. For full details of the Abpromise, please visit <https://www.abcam.co.jp/abpromise> or contact our technical team.

Terms and conditions

- Guarantee only valid for products bought direct from Abcam or one of our authorized distributors