

Anti-Firefly Luciferase antibody ab21176

★★★★★ [19 Abreviews](#) [73 References](#) [画像数 5](#)

製品の概要

製品名	Anti-Firefly Luciferase antibody
製品の詳細	Rabbit polyclonal to Firefly Luciferase
由来種	Rabbit
アプリケーション	適用あり: ICC/IF, WB
種交差性	交差種: Firefly
免疫原	Full length native protein (purified) (Firefly (Photinus pyralis)).
特記事項	<p>The Life Science industry has been in the grips of a reproducibility crisis for a number of years. Abcam is leading the way in addressing this with our range of recombinant monoclonal antibodies and knockout edited cell lines for gold-standard validation. Please check that this product meets your needs before purchasing.</p> <p>If you have any questions, special requirements or concerns, please send us an inquiry and/or contact our Support team ahead of purchase. Recommended alternatives for this product can be found below, along with publications, customer reviews and Q&As</p>

製品の特性

製品の状態	Liquid
保存方法	Shipped at 4°C. Store at +4°C short term (1-2 weeks). Upon delivery aliquot. Store at -20°C or -80°C. Avoid freeze / thaw cycle.
バッファー	pH: 7.40 Preservative: 0.097% Sodium azide Constituent: PBS
精製度	IgG fraction
ポリ/モノ	ポリクローナル
アイソタイプ	IgG

アプリケーション

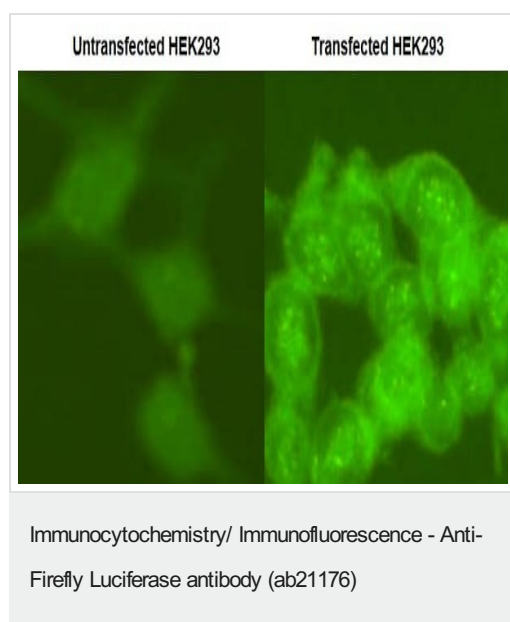
The Abpromise guarantee **Abpromise保証は、** 次のテスト済みアプリケーションにおけるab21176の使用に適用されます
アプリケーションノートには、推奨の開始希釈率がありますが、適切な希釈率につきましてはご検討ください。

アプリケーション	Abreviews	特記事項
ICC/IF	★★★★★ (4)	Use a concentration of 10 µg/ml.
WB	★★★★★ (3)	1/1000 - 1/2000.

ターゲット情報

関連性	Luciferase from the firefly has become one of the more widely used reporter proteins for the study of gene expression. Luciferase catalyzes a bioluminescent reaction which requires the substrate luciferin as well as Mg ²⁺ and ATP. Mixing these reagents with the cell extract containing luciferase, results in a flash of light that decays rapidly. This light can be detected by a luminometer. The total light emission is proportional to the luciferase activity of the sample.
細胞内局在	Peroxisome

画像

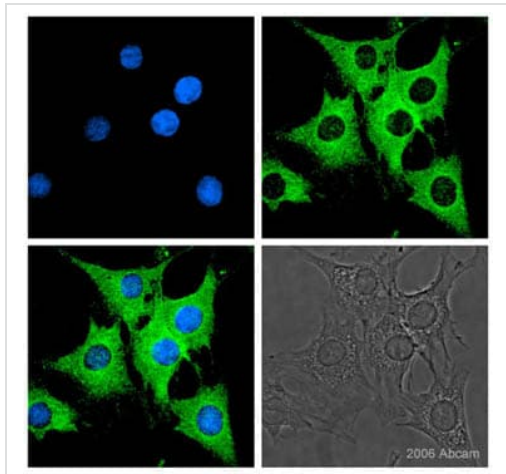


ab21176 at 10 µg/mL staining Luciferase in transfected HEK-293 (Human epithelial cell line from embryonic kidney) cells by ICC/IF.

The cells were fixed with methanol and acetone. An FITC conjugated anti-Rabbit IgG was used as the secondary antibody.

Left panel: Un-transfected cells.

Right panel: Transfected cells.



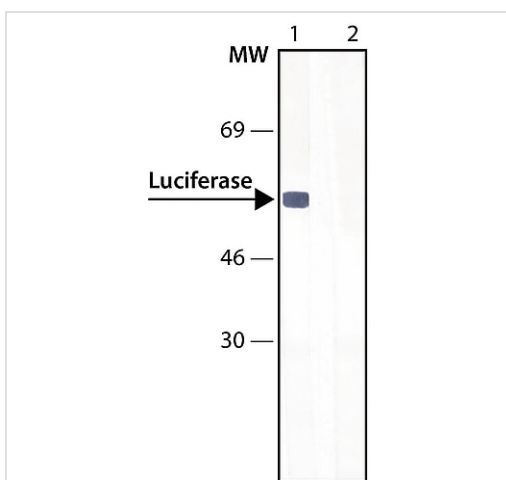
Immunocytochemistry/ Immunofluorescence - Anti-Firefly Luciferase antibody (ab21176)

This image is courtesy of an Abreview submitted by Dr Mal Niladri

ab21176 at 1/200 dilution staining engineered adult rat stromal stem cells by ICC/IF.

The cells were fixed in 2% paraformaldehyde and 0.1% Triton X-100 was used for cell permeabilization (15 minutes incubation time). The cells were incubated with the antibody overnight at 4°C. The image shows Luciferase (green-**upper right panel**), counterstained cell nuclei (DAPI-blue-**upper left panel**), overlay (**lower left panel**) and a phase contrast image (**lower right panel**).

The image was taken with a confocal laser scanning microscope equipped with an additional laser differential Interference Contrast (DIC) mode.



Western blot - Anti-Firefly Luciferase antibody (ab21176)

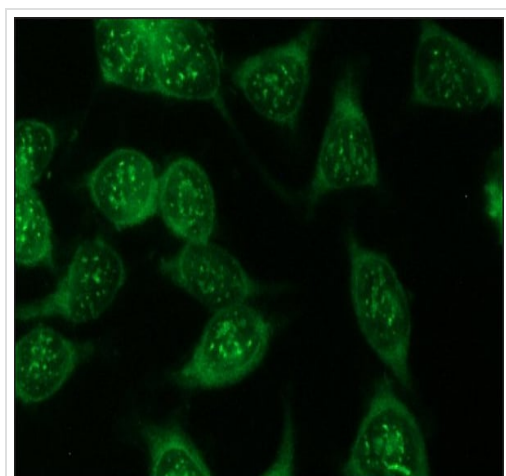
All lanes : Anti-Firefly Luciferase antibody (ab21176) at 1/1000 dilution

Lane 1 : Lysates from HEK-293T (Human epithelial cell line from embryonic kidney transformed with large T antigen) cells overexpressing luciferase

Lane 2 : Lysates from HEK-293T cells overexpressing luciferase with Luciferase Immunizing Peptide

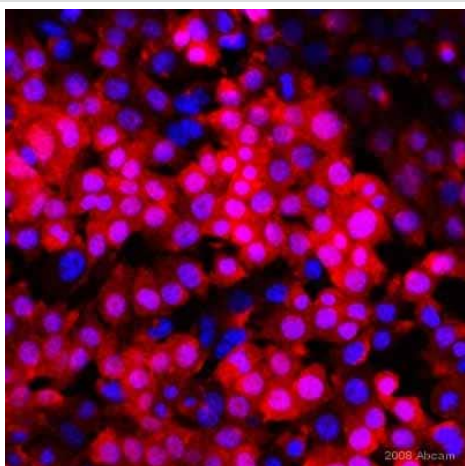
Secondary

All lanes : Goat Anti-Rabbit IgG-Alkaline Phosphatase and a colorimetric substrate



Immunocytochemistry/ Immunofluorescence - Anti-Firefly Luciferase antibody (ab21176)

Immunocytochemical analysis analysis of HEK-293T (Human epithelial cell line from embryonic kidney transformed with large T antigen) cells overexpressing luciferase labeling Luciferase with ab21176 at a concentration of 10 µg/mL. The secondary antibody was a Goat anti-Rabbit IgG, FITC conjugate.



Immunocytochemistry/ Immunofluorescence - Anti-Firefly Luciferase antibody (ab21176)

This image is courtesy of an anonymous Abreview

ab21176 staining mouse mammary carcinoma cells by ICC/IF.

Cells were PFA fixed and permeabilized in 0.1% Triton X-100 prior to blocking with a commercial blocking agent. The primary antibody was diluted 1/100 and incubated with the sample for 1 hour at 25°C. An Alexa-Fluor® 555 conjugated goat anti-rabbit antibody was used as the secondary.

The image shows firefly luciferase (red) in mouse tumour cells and cell nuclei counterstained with Hoechst (blue).

Please note: All products are "FOR RESEARCH USE ONLY. NOT FOR USE IN DIAGNOSTIC PROCEDURES"

Our Abpromise to you: Quality guaranteed and expert technical support

- Replacement or refund for products not performing as stated on the datasheet
- Valid for 12 months from date of delivery
- Response to your inquiry within 24 hours
- We provide support in Chinese, English, French, German, Japanese and Spanish
- Extensive multi-media technical resources to help you
- We investigate all quality concerns to ensure our products perform to the highest standards

If the product does not perform as described on this datasheet, we will offer a refund or replacement. For full details of the Abpromise, please visit <https://www.abcam.co.jp/abpromise> or contact our technical team.

Terms and conditions

- Guarantee only valid for products bought direct from Abcam or one of our authorized distributors