

Anti-Filamin A (phospho S2152) + Filamin B (phospho S2107) antibody [EP2310AY] ab75978

リコンビナント **RabMAb**

2 References [画像数 6](#)

製品の概要

| | |
|--------------|---|
| 製品名 | Anti-Filamin A (phospho S2152) + Filamin B (phospho S2107) antibody [EP2310AY] |
| 製品の詳細 | Rabbit monoclonal [EP2310AY] to Filamin A (phospho S2152) + Filamin B (phospho S2107) |
| 由来種 | Rabbit |
| 特異性 | ab75978 detects Filamin A phosphorylated on serine 2152 and Filamin B phosphorylated on serine 2107. |
| アプリケーション | 適用あり: WB, IHC-P 適用なし: Flow Cyt or IP |
| 種交差性 | 交差種: Mouse, Rat, Human |
| 免疫原 | Synthetic peptide. This information is proprietary to Abcam and/or its suppliers. |
| ポジティブ・コントロール | WB: HEK-293, NIH/3T3, and C6 whole cell lysates. IHC-P: Human, Mouse, and Rat kidney tissue. |
| 特記事項 | <p>This product has switched from a hybridoma to recombinant production method on 9th June 2023.</p> <p>This product is a recombinant monoclonal antibody, which offers several advantages including:</p> <ul style="list-style-type: none">- High batch-to-batch consistency and reproducibility- Improved sensitivity and specificity- Long-term security of supply- Animal-free production <p>For more information see here.</p> <p>Our RabMAb[®] technology is a patented hybridoma-based technology for making rabbit monoclonal antibodies. For details on our patents, please refer to RabMAb[®] patents.</p> |

製品の特性

| | |
|-------|--|
| 製品の状態 | Liquid |
| 保存方法 | Shipped at 4°C. Upon delivery aliquot and store at -20°C. Avoid freeze / thaw cycles. |
| バッファー | pH: 7.20 Preservative: 0.01% Sodium azide Constituents: 59% PBS, 40% Glycerol (glycerin, glycerine), 0.05% BSA |
| 精製度 | Protein A purified |

| | |
|--------|----------|
| ポリ/モノ | モノクローナル |
| クローン名 | EP2310AY |
| アイソタイプ | IgG |

アプリケーション

The Abpromise guarantee **Abpromise保証は、次のテスト済みアプリケーションにおけるab75978の使用に適用されます**
 アプリケーションノートには、推奨の開始希釈率がありますが、適切な希釈率につきましてはご確認ください。

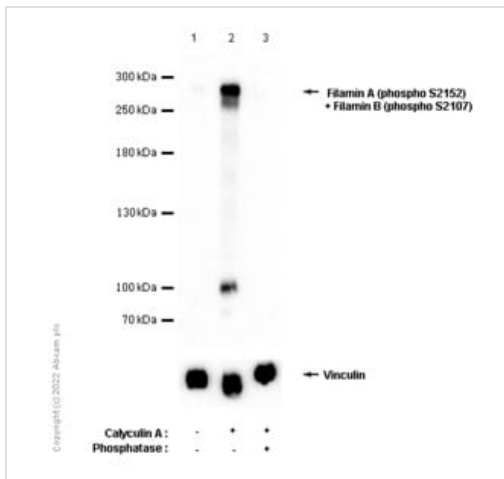
| アプリケーション | Abreviews | 特記事項 |
|----------|-----------|---|
| WB | | 1/100000. Detects a band of approximately 281 kDa (predicted molecular weight: 281 kDa). |
| IHC-P | | 1/1200. Perform heat mediated antigen retrieval before commencing with IHC staining protocol. |

追加情報 Is unsuitable for Flow Cyt or IP.

ターゲット情報

関連性 Filamin A-P21333. Function: Promotes orthogonal branching of actin filaments and links actin filaments to membrane glycoproteins. Anchors various transmembrane proteins to the actin cytoskeleton and serves as a scaffold for a wide range of cytoplasmic signaling proteins. Interaction with FLNA may allow neuroblast migration from the ventricular zone into the cortical plate. Tethers cell surface-localized furin, modulates its rate of internalization and directs its intracellular trafficking. Involved in ciliogenesis. Filamin B-O75369. Function: Connects cell membrane constituents to the actin cytoskeleton. May promote orthogonal branching of actin filaments and links actin filaments to membrane glycoproteins. Anchors various transmembrane proteins to the actin cytoskeleton. Interaction with FLNA may allow neuroblast migration from the ventricular zone into the cortical plate. Various interactions and localizations of isoforms affect myotube morphology and myogenesis. Isoform 6 accelerates muscle differentiation in vitro.

画像



Western blot - Anti-Filamin A (phospho S2152) + Filamin B (phospho S2107) antibody [EP2310AY] (ab75978)

All lanes : Anti-Filamin A (phospho S2152) + Filamin B (phospho S2107) antibody [EP2310AY] (ab75978) at 1/100000 dilution

Lane 1 : HEK-293 (Human embryonic kidney epithelial cell) whole cell lysate

Lane 2 : HEK-293 (Human embryonic kidney epithelial cell) treated with 50nM Calyculin A for 3 hours whole cell lysate

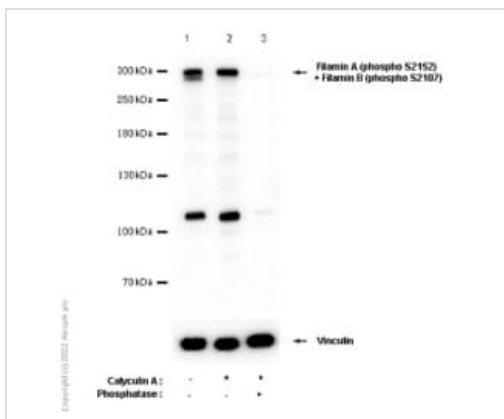
Lane 3 : HEK-293 (Human embryonic kidney epithelial cell) treated with 50nM Calyculin A for 3 hours whole cell lysate, then the membrane was incubated with Alkaline phosphatase

Lysates/proteins at 15 µg per lane.

Predicted band size: 281 kDa

Exposure time: 10 seconds

Blocking and diluting buffer and concentration: 5% NFDM/TBST.



Western blot - Anti-Filamin A (phospho S2152) + Filamin B (phospho S2107) antibody [EP2310AY] (ab75978)

All lanes : Anti-Filamin A (phospho S2152) + Filamin B (phospho S2107) antibody [EP2310AY] (ab75978) at 1/100000 dilution

Lane 1 : NIH/3T3 (Mouse embryonic fibroblast) whole cell lysate

Lane 2 : NIH/3T3 (Mouse embryonic fibroblast) treated with 100nM Calyculin A for 30 minutes whole cell lysate

Lane 3 : Calyculin A for 30 minutes whole cell lysate, then the membrane was incubated with Alkaline phosphatase

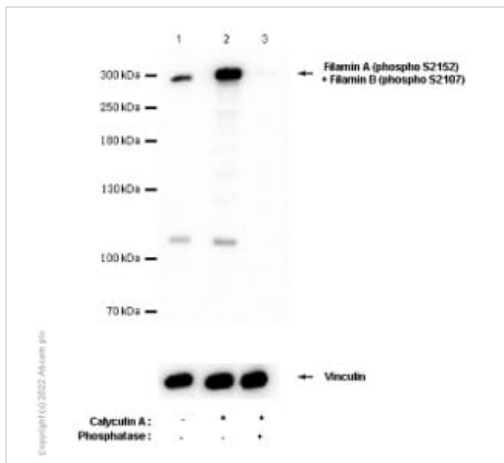
Lysates/proteins at 15 µg per lane.

Predicted band size: 281 kDa

Observed band size: 280 kDa

Exposure time: 10 seconds

Blocking and diluting buffer and concentration: 5% NFDM/TBST.



Western blot - Anti-Filamin A (phospho S2152) + Filamin B (phospho S2107) antibody [EP2310AY] (ab75978)

All lanes : Anti-Filamin A (phospho S2152) + Filamin B (phospho S2107) antibody [EP2310AY] (ab75978) at 1/100000 dilution

Lane 1 : C6 (Rat glial tumor glial cell) whole cell lysate

Lane 2 : C6 (Rat glial tumor glial cell) treated with 100nM Calyculin A for 30 minutes whole cell lysate

Lane 3 : C6 (Rat glial tumor glial cell) treated with 100nM Calyculin A for 30 minutes whole cell lysate, then the membrane was incubated with Alkaline phosphatase

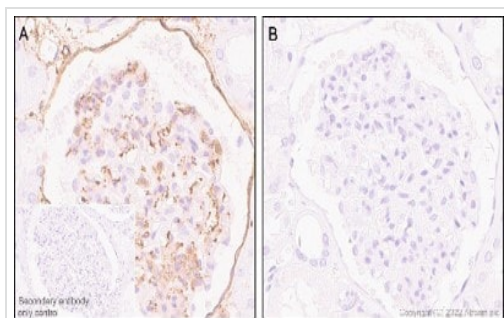
Lysates/proteins at 15 µg per lane.

Predicted band size: 281 kDa

Observed band size: 280 kDa

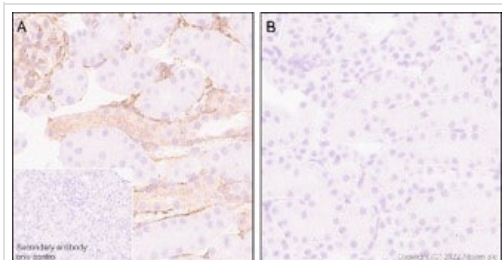
Exposure time: 10 seconds

Blocking and diluting buffer and concentration: 5% NFDM/TBST.



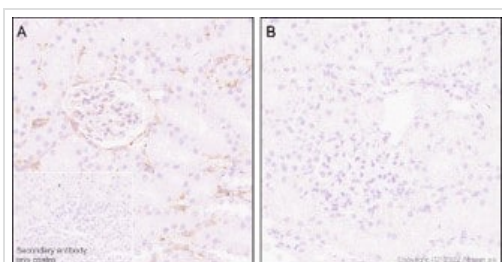
Immunohistochemistry (Formalin/PFA-fixed paraffin-embedded sections) - Anti-Filamin A (phospho S2152) + Filamin B (phospho S2107) antibody [EP2310AY] (ab75978)

Immunohistochemical analysis of paraffin-embedded Human kidney tissue labelling Filamin A (phospho S2152) + Filamin B (phospho S2107) with ab75978 at 1/1200 dilution, followed by a ready to use LeicaDS9800 (Bond™ Polymer Refine Detection). Positive staining on Human kidney tissue without alkaline phosphatase treatment (A) compared to no signal detected when treated with alkaline phosphatase (B). The immunostaining was performed on a Leica Biosystems BOND® RX instrument. Secondary antibody only control: Secondary antibody is a ready to use LeicaDS9800 (Bond™ Polymer Refine Detection). Heat mediated antigen retrieval was performed with Tris-EDTA buffer (pH 9.0, epitope retrieval Solution2) for 30 mins. Counterstained with hematoxylin.



Immunohistochemistry (Formalin/PFA-fixed paraffin-embedded sections) - Anti-Filamin A (phospho S2152) + Filamin B (phospho S2107) antibody [EP2310AY] (ab75978)

Immunohistochemical analysis of paraffin-embedded Mouse kidney tissue labelling Filamin A (phospho S2152) + Filamin B (phospho S2107) with ab75978 at 1/1200 dilution, followed by a ready to use LeicaDS9800 (Bond™ Polymer Refine Detection). Positive staining on Mouse kidney tissue without alkaline phosphatase treatment (A) compared to no signal detected when treated with alkaline phosphatase (B). The immunostaining was performed on a Leica Biosystems BOND® RX instrument. Secondary antibody only control: Secondary antibody is a ready to use LeicaDS9800 (Bond™ Polymer Refine Detection). Heat mediated antigen retrieval was performed with Tris-EDTA buffer (pH 9.0, epitope retrieval Solution2) for 30 mins. Counterstained with hematoxylin.



Immunohistochemistry (Formalin/PFA-fixed paraffin-embedded sections) - Anti-Filamin A (phospho S2152) + Filamin B (phospho S2107) antibody [EP2310AY] (ab75978)

Immunohistochemical analysis of paraffin-embedded Rat kidney tissue labelling Filamin A (phospho S2152) + Filamin B (phospho S2107) with ab75978 at 1/1200 dilution, followed by a ready to use LeicaDS9800 (Bond™ Polymer Refine Detection). Positive staining on Rat kidney tissue without alkaline phosphatase treatment (A) compared to no signal detected when treated with alkaline phosphatase (B). The immunostaining was performed on a Leica Biosystems BOND® RX instrument. Secondary antibody only control: Secondary antibody is a ready to use LeicaDS9800 (Bond™ Polymer Refine Detection). Heat mediated antigen retrieval was performed with Tris-EDTA buffer (pH 9.0, epitope retrieval Solution2) for 30 mins. Counterstained with hematoxylin.

Please note: All products are "FOR RESEARCH USE ONLY. NOT FOR USE IN DIAGNOSTIC PROCEDURES"

Our Abpromise to you: Quality guaranteed and expert technical support

- Replacement or refund for products not performing as stated on the datasheet
- Valid for 12 months from date of delivery
- Response to your inquiry within 24 hours
- We provide support in Chinese, English, French, German, Japanese and Spanish
- Extensive multi-media technical resources to help you
- We investigate all quality concerns to ensure our products perform to the highest standards

If the product does not perform as described on this datasheet, we will offer a refund or replacement. For full details of the Abpromise, please visit <https://www.abcam.co.jp/abpromise> or contact our technical team.

Terms and conditions

- Guarantee only valid for products bought direct from Abcam or one of our authorized distributors