


Anti-FIF antibody ab99307

画像数 3

製品の概要

製品名	Anti-FIF antibody
製品の詳細	Rabbit polyclonal to FIF
由来種	Rabbit
アプリケーション	適用あり: WB, IP, IHC-P
種交差性	交差種: Mouse, Human 交差が予測される動物種: Rat, Rabbit, Horse, Chicken, Guinea pig, Pig, Xenopus laevis, Chimpanzee, Rhesus monkey, Gorilla, Orangutan, Xenopus tropicalis, Platypus 
免疫原	Synthetic peptide corresponding to Human FIF aa 1-50. Database link: XP_508375.2
ポジティブ・コントロール	Whole cell lysates from HeLa, 293T and Mouse NIH 3T3 cells.
特記事項	<p>The Life Science industry has been in the grips of a reproducibility crisis for a number of years. Abcam is leading the way in addressing this with our range of recombinant monoclonal antibodies and knockout edited cell lines for gold-standard validation. Please check that this product meets your needs before purchasing.</p> <p>If you have any questions, special requirements or concerns, please send us an inquiry and/or contact our Support team ahead of purchase. Recommended alternatives for this product can be found below, along with publications, customer reviews and Q&As</p>

製品の特性

製品の状態	Liquid
保存方法	Shipped at 4°C. Upon delivery aliquot and store at -20°C. Avoid freeze / thaw cycles.
バッファー	pH: 6.8 Preservative: 0.09% Sodium azide Constituents: 0.1% BSA, Tris buffered saline
精製度	Immunogen affinity purified
ポリ/モノ	ポリクローナル
アイソタイプ	IgG

アプリケーション

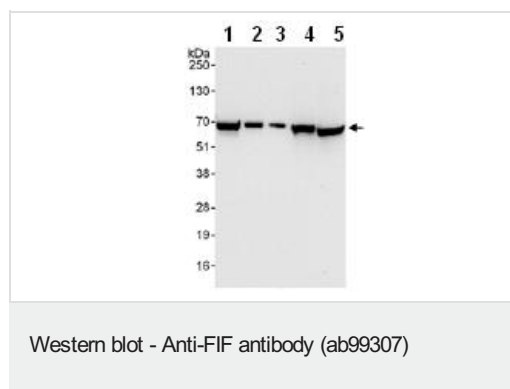
The Abpromise guarantee **Abpromise保証は、** 次のテスト済みアプリケーションにおけるab99307の使用に適用されます
 アプリケーションノートには、推奨の開始希釈率がありますが、適切な希釈率につきましてはご検討ください。

アプリケーション	Abreviews	特記事項
WB		1/2000 - 1/10000. Predicted molecular weight: 58 kDa.
IP		Use at 2-5 µg/mg of lysate.
IHC-P		1/100 - 1/2000. Perform heat mediated antigen retrieval with citrate buffer pH 6 before commencing with IHC staining protocol.

ターゲット情報

機能	Antiapoptotic factor that may have a role in protein assembly. Negatively regulates ACIN1. By binding to ACIN1, it suppresses ACIN1 cleavage from CASP3 and ACIN1-mediated DNA fragmentation. Also known to efficiently suppress E2F1-induced apoptosis. Its depletion enhances the cytotoxic action of the chemotherapeutic drugs.
組織特異性	Expressed in all tissues tested, including heart, brain, placenta, lung, liver, skeletal muscle, kidney and pancreas. Highest levels in heart, pancreas and placenta. Highly expressed in several cancers. Preferentially expressed in squamous cell carcinoma versus adenocarcinoma in non-small cell lung cancer.
配列類似性	Belongs to the API5 family.
ドメイン	Two regions, an N-terminal (aa 96-107) and a C-terminal (aa 274-311) are required for binding FGF2.
細胞内局在	Cytoplasm and Nucleus. Cytoplasm. Mainly nuclear. Can also be cytoplasmic.

画像



All lanes : Anti-FIF antibody (ab99307) at 0.04 µg/ml

Lane 1 : HeLa whole cell
lysate at 50 µg

Lane 2 : HeLa whole cell
lysate at 15 µg

Lane 3 : HeLa whole cell
lysate at 5 µg

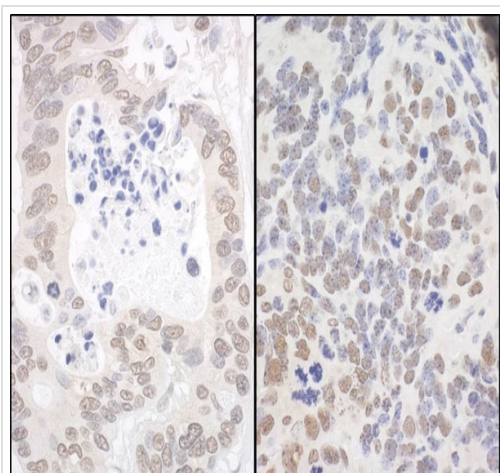
Lane 4 : 293T whole cell
lysate at 50 µg

Lane 5 : NIH 3T3 whole cell
lysate at 50 µg

Developed using the ECL technique.

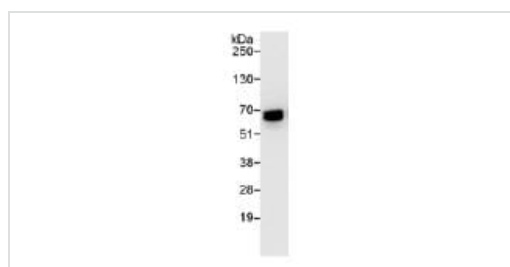
Predicted band size: 58 kDa

Exposure time: 10 seconds



Immunohistochemistry (Formalin/PFA-fixed paraffin-embedded sections) analysis of human breast carcinoma (left) and mouse teratoma (right) tissues labelling FIF with ab99307 at 1/1000 (0.2µg/mg) and 1/200 (1 µg/mg). Detection: DAB.

Immunohistochemistry (Formalin/PFA-fixed paraffin-embedded sections) - Anti-FIF antibody (ab99307)



ab99307, at 0.4 µg/ml, staining FIF in HeLa whole cell lysate immunoprecipitated using ab99307 at 3 µg/mg lysate (1 mg/IP; 20% of IP loaded/lane).

Detection: Chemiluminescence with an exposure time of 1 second.

Immunoprecipitation - Anti-FIF antibody (ab99307)

Please note: All products are "FOR RESEARCH USE ONLY. NOT FOR USE IN DIAGNOSTIC PROCEDURES"

Our Abpromise to you: Quality guaranteed and expert technical support

- Replacement or refund for products not performing as stated on the datasheet
- Valid for 12 months from date of delivery
- Response to your inquiry within 24 hours
- We provide support in Chinese, English, French, German, Japanese and Spanish
- Extensive multi-media technical resources to help you
- We investigate all quality concerns to ensure our products perform to the highest standards

If the product does not perform as described on this datasheet, we will offer a refund or replacement. For full details of the Abpromise, please visit <https://www.abcam.co.jp/abpromise> or contact our technical team.

Terms and conditions

- Guarantee only valid for products bought direct from Abcam or one of our authorized distributors