

Anti-Fibulin 5 antibody [1G6A4] ab66339

★★★★☆ [3 Abreviews](#) [16 References](#) [画像数 5](#)

製品の概要

製品名	Anti-Fibulin 5 antibody [1G6A4]
製品の詳細	Mouse monoclonal [1G6A4] to Fibulin 5
由来種	Mouse
アプリケーション	適用あり: WB, IHC-P, ICC/IF
種交差性	交差種: Human, Recombinant fragment
免疫原	Recombinant His tagged fragment, corresponding to amino acids 242-448 of Human Fibulin 5
ポジティブ・コントロール	Colon and breast cancer
特記事項	<p>This product was changed from ascites to supernatant. Lot no's high than GR171104-21 are from Tissue Culture Supernatant</p> <p>The Life Science industry has been in the grips of a reproducibility crisis for a number of years. Abcam is leading the way in addressing this with our range of recombinant monoclonal antibodies and knockout edited cell lines for gold-standard validation. Please check that this product meets your needs before purchasing.</p> <p>If you have any questions, special requirements or concerns, please send us an inquiry and/or contact our Support team ahead of purchase. Recommended alternatives for this product can be found below, along with publications, customer reviews and Q&As</p>

製品の特性

製品の状態	Liquid
保存方法	Shipped at 4°C. Upon delivery aliquot and store at -20°C or -80°C. Avoid repeated freeze / thaw cycles.
バッファー	Preservative: 0.05% Sodium azide Constituent: PBS
精製度	Protein G purified
特記事項(精製)	Purified from tissue culture supernatant.
ポリ/モノ	モノクローナル
クローン名	1G6A4
アイソタイプ	IgG1

アプリケーション

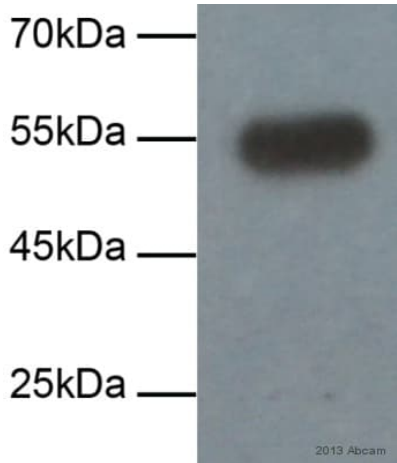
The Abpromise guarantee **Abpromise保証は、次のテスト済みアプリケーションにおけるab66339の使用に適用されず**
アプリケーションノートには、推奨の開始希釈率がありますが、適切な希釈率につきましてはご検討ください。

アプリケーション	Abreviews	特記事項
WB	★★★★☆ (2)	1/500 - 1/2000. Predicted molecular weight: 50 kDa.
IHC-P		1/500 - 1/2000.
ICC/IF	★★★★★ (1)	Use a concentration of 10 µg/ml.

ターゲット情報

機能	Promotes adhesion of endothelial cells through interaction of integrins and the RGD motif. Could be a vascular ligand for integrin receptors and may play a role in vascular development and remodeling.
組織特異性	Expressed predominantly in heart, ovary, and colon but also in kidney, pancreas, testis, lung and placenta. Not detectable in brain, liver, thymus, prostate, or peripheral blood leukocytes.
関連疾患	<p>Defects in FBLN5 are a cause of autosomal dominant cutis laxa (ADCL) [MIM:123700]. Hereditary cutis laxa refers to a heterogeneous group of connective tissue disorders characterized by cutaneous abnormalities and variable systemic manifestations. The most constant clinical feature is loose skin, sagging over the face and trunk. Hereditary cutis laxa is inherited in both autosomal dominant and autosomal recessive modes. Autosomal dominant cutis laxa is a relatively benign inherited and acquired connective tissue disorder.</p> <p>Defects in FBLN5 are a cause of cutis laxa autosomal recessive type 1 (ARCL1) [MIM:219100]. Hereditary cutis laxa refers to a heterogeneous group of connective tissue disorders characterized by cutaneous abnormalities and variable systemic manifestations. The most constant clinical feature is loose skin, sagging over the face and trunk. Hereditary cutis laxa is inherited in both autosomal dominant and autosomal recessive modes. ARCL1 shows the most severe phenotype and has the poorest prognosis. In addition to the skin, internal organs enriched in elastic fibers, such as the lung and arteries, are affected.</p> <p>Defects in FBLN5 are the cause of age-related macular degeneration type 3 (ARMD3) [MIM:608895]. ARMD is a multifactorial disease and the most common cause of irreversible vision loss in the developed world. In most patients, the disease is manifest as ophthalmoscopically visible yellowish accumulations of protein and lipid (known as drusen) that lie beneath the retinal pigment epithelium and within an elastin-containing structure known as Bruch membrane.</p>
配列類似性	Belongs to the fibulin family. Contains 6 EGF-like domains.
細胞内局在	Secreted.

画像



Western blot - Anti-Fibulin 5 antibody [1G6A4] (ab66339)

This image is courtesy of an anonymous Abreview

Anti-Fibulin 5 antibody [1G6A4] (ab66339) at 1/2000 dilution + Human vascular smooth muscle whole cell lysate at 20 µg

Secondary

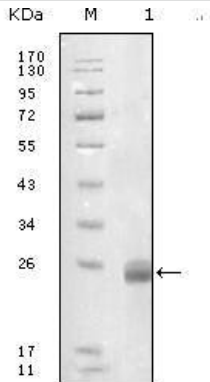
HRP-conjugated Rabbit anti-mouse IgG polyclonal at 1/2000 dilution

Performed under reducing conditions.

Predicted band size: 50 kDa

Observed band size: 55 kDa

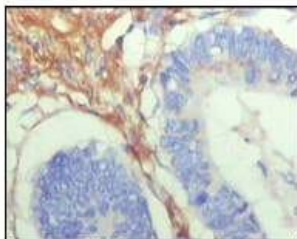
Exposure time: 1 minute



Western blot - Anti-Fibulin 5 antibody [1G6A4] (ab66339)

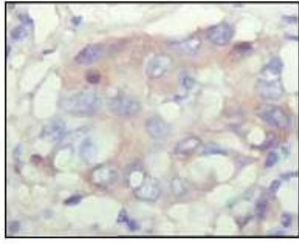
Anti-Fibulin 5 antibody [1G6A4] (ab66339) at 1/500 dilution + Immunogen (recombinant truncated protein) at 1 µg

Predicted band size: 50 kDa



Immunohistochemistry (Formalin/PFA-fixed paraffin-embedded sections) - Anti-Fibulin 5 antibody [1G6A4] (ab66339)

Immunohistochemical analysis of paraffin embedded human colon cancer tissue showing cytoplasmic localisation with DAB staining using **ab66337** at 1/500 dilution.



Immunohistochemistry (Formalin/PFA-fixed paraffin-embedded sections) - Anti-Fibulin 5 antibody [1G6A4] (ab66339)

Immunohistochemical analysis of paraffin embedded human breast carcinoma tissue showing cytoplasmic localisation with DAB staining using **ab66337** at 1/500 dilution.

Immunocytochemistry/ Immunofluorescence - Anti-Fibulin 5 antibody [1G6A4] (ab66339)

ICC/IF image of ab66339 stained HeLa cells. The cells were 4% formaldehyde fixed (10 min) and then incubated in 1%BSA / 10% normal goat serum / 0.3M glycine in 0.1% PBS-Tween for 1h to permeabilise the cells and block non-specific protein-protein interactions. The cells were then incubated with the antibody (ab66339, 10µg/ml) overnight at +4°C. The secondary antibody (green) was Alexa Fluor® 488 goat anti-mouse IgG (H+L) used at a 1/1000 dilution for 1h. Alexa Fluor® 594 WGA was used to label plasma membranes (red) at a 1/200 dilution for 1h. DAPI was used to stain the cell nuclei (blue) at a concentration of 1.43µM.

Please note: All products are "FOR RESEARCH USE ONLY. NOT FOR USE IN DIAGNOSTIC PROCEDURES"

Our Abpromise to you: Quality guaranteed and expert technical support

- Replacement or refund for products not performing as stated on the datasheet
- Valid for 12 months from date of delivery
- Response to your inquiry within 24 hours
- We provide support in Chinese, English, French, German, Japanese and Spanish
- Extensive multi-media technical resources to help you
- We investigate all quality concerns to ensure our products perform to the highest standards

If the product does not perform as described on this datasheet, we will offer a refund or replacement. For full details of the Abpromise, please visit <https://www.abcam.co.jp/abpromise> or contact our technical team.

Terms and conditions

- Guarantee only valid for products bought direct from Abcam or one of our authorized distributors