

# Anti-Fibulin 2 antibody ab96138

**1 References** [画像数 1](#)

## 製品の概要

製品名	Anti-Fibulin 2 antibody
製品の詳細	Rabbit polyclonal to Fibulin 2
由来種	Rabbit
アプリケーション	<b>適用あり:</b> WB
種交差性	<b>交差種:</b> Human
免疫原	Recombinant fragment, corresponding to a region within amino acids 20-283 of Human Fibulin 2 (NP_001004019).
ポジティブ・コントロール	H1299 and HeLa whole cell lysates
特記事項	<p>The Life Science industry has been in the grips of a reproducibility crisis for a number of years. Abcam is leading the way in addressing this with our range of recombinant monoclonal antibodies and knockout edited cell lines for gold-standard validation. Please check that this product meets your needs before purchasing.</p> <p>If you have any questions, special requirements or concerns, please send us an inquiry and/or contact our Support team ahead of purchase. Recommended alternatives for this product can be found below, along with publications, customer reviews and Q&amp;As</p>

## 製品の特性

製品の状態	Liquid
保存方法	Shipped at 4°C. Upon delivery aliquot and store at -20°C. Avoid freeze / thaw cycles.
バッファー	<p>pH: 7.00</p> <p>Preservative: 0.025% Proclin 300</p> <p>Constituents: 79% PBS, 20% Glycerol (glycerin, glycerine)</p>
精製度	Immunogen affinity purified
特記事項(精製)	Purified by antigen affinity chromatography.
ポリ/モノ	ポリクローナル
アイソタイプ	IgG

## アプリケーション

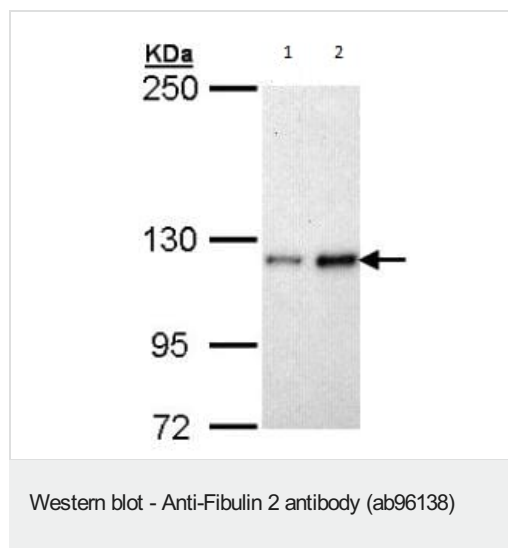
**The Abpromise guarantee**      **Abpromise保証は、** 次のテスト済みアプリケーションにおけるab96138の使用に適用されます  
 アプリケーションノートには、推奨の開始希釈率がありますが、適切な希釈率につきましてはご検討ください。

アプリケーション	Abreviews	特記事項
WB		1/500 - 1/3000. Predicted molecular weight: 132 kDa.

## ターゲット情報

機能	Its binding to fibronectin and some other ligands is calcium dependent.
組織特異性	Component of both basement membranes and other connective tissues. Expressed in heart, placenta and ovary.
配列類似性	Belongs to the fibulin family. Contains 3 anaphylatoxin-like domains. Contains 11 EGF-like domains.
発生段階	Widely expressed during embryonic development. Primarily detected within the neuropithelium, spinal ganglia and peripheral nerves.
細胞内局在	Secreted > extracellular space > extracellular matrix.

## 画像



**All lanes :** Anti-Fibulin 2 antibody (ab96138) at 1/1000 dilution

**Lane 1 :** H1299 whole cell lysate

**Lane 2 :** Hela whole cell lysate

Lysates/proteins at 30 µg per lane.

**Predicted band size:** 132 kDa

5% SDS PAGE

**Please note:** All products are "FOR RESEARCH USE ONLY. NOT FOR USE IN DIAGNOSTIC PROCEDURES"

## Our Abpromise to you: Quality guaranteed and expert technical support

- Replacement or refund for products not performing as stated on the datasheet
- Valid for 12 months from date of delivery
- Response to your inquiry within 24 hours
- We provide support in Chinese, English, French, German, Japanese and Spanish

- Extensive multi-media technical resources to help you
- We investigate all quality concerns to ensure our products perform to the highest standards

If the product does not perform as described on this datasheet, we will offer a refund or replacement. For full details of the Abpromise, please visit <https://www.abcam.co.jp/abpromise> or contact our technical team.

#### **Terms and conditions**

---

- Guarantee only valid for products bought direct from Abcam or one of our authorized distributors