


Anti-Fibulin 1 antibody [EPR10913] ab175204

リコンビナント **RabMAb**

4 References [画像数 2](#)

製品の概要

製品名	Anti-Fibulin 1 antibody [EPR10913]
製品の詳細	Rabbit monoclonal [EPR10913] to Fibulin 1
由来種	Rabbit
アプリケーション	適用あり: WB 適用なし: ICC/IF or IHC-P
種交差性	交差種: Human 交差が予測される動物種: Mouse, Rat 
免疫原	Recombinant fragment within Human Fibulin 1 aa 250-450. The exact sequence is proprietary. Database link: P23142
ポジティブ・コントロール	Human placenta, fetal liver and fetal heart tissue lysate
特記事項	This product is a recombinant monoclonal antibody, which offers several advantages including: <ul style="list-style-type: none"> - High batch-to-batch consistency and reproducibility - Improved sensitivity and specificity - Long-term security of supply - Animal-free production For more information see here . Our RabMAb [®] technology is a patented hybridoma-based technology for making rabbit monoclonal antibodies. For details on our patents, please refer to RabMAb[®] patents .

製品の特性

製品の状態	Liquid
保存方法	Shipped at 4°C. Store at +4°C short term (1-2 weeks). Upon delivery aliquot. Store at -20°C long term. Avoid freeze / thaw cycle.
バッファー	pH: 7.20 Preservative: 0.01% Sodium azide Constituents: 9% PBS, 40% Glycerol (glycerin, glycerine), 0.05% BSA, 50% Tissue culture supernatant
精製度	Tissue culture supernatant
ポリ/モノ	モノクローナル

クローン名 EPR10913
アイソタイプ IgG

アプリケーション

The Abpromise guarantee Abpromise保証は、次のテスト済みアプリケーションにおけるab175204の使用に適用されます
アプリケーションノートには、推奨の開始希釈率がありますが、適切な希釈率につきましてはご検討ください。

アプリケーション	Abreviews	特記事項
WB		1/1000 - 1/5000. Predicted molecular weight: 77 kDa.

追加情報 Is unsuitable for ICC/IF or IHC-P.

ターゲット情報

機能 Incorporated into fibronectin-containing matrix fibers. May play a role in cell adhesion and migration along protein fibers within the extracellular matrix (ECM). Could be important for certain developmental processes and contribute to the supramolecular organization of ECM architecture, in particular to those of basement membranes. Has been implicated in a role in cellular transformation and tumor invasion, it appears to be a tumor suppressor. May play a role in haemostasis and thrombosis owing to its ability to bind fibrinogen and incorporate into clots. Could play a significant role in modulating the neurotrophic activities of APP, particularly soluble APP.

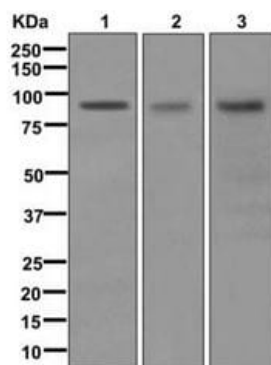
組織特異性 Isoform A and isoform B are only expressed in placenta. Isoform C and isoform D are expressed in a variety of tissues and cultured cells.

関連疾患 Note=A chromosomal aberration involving FBLN1 is found in a complex type of synpolydactyly referred to as 3/3-prime/4 synpolydactyly associated with metacarpal and metatarsal synostoses. Reciprocal translocation t(12;22)(p11.2;q13.3) with C12orf2. Fibroblasts derived from a patient with synpolydactyly displayed alterations in the level of isoform D splice variant incorporated into the ECM and secreted into the conditioned culture medium. By contrast, the expression of isoform C was not perturbed in the patients fibroblasts. Furthermore, no aberrant polypeptides were detected in extracts of cultured patients fibroblasts. The translocation t(12;22) may result in haploinsufficiency of the isoform D splice variant, which could lead to the observed limb malformation.
Note=Elevated expression and altered processing of FBLN1 protein is associated with human breast cancer.

配列類似性 Belongs to the fibulin family.
Contains 3 anaphylatoxin-like domains.
Contains 9 EGF-like domains.

発生段階 Widely expressed during embryonic development. Prominent in the matrix of the leptomeningeal anlage, in basement membranes of the neuroepithelium and the perineurium of peripheral nerves. In embryos of gestational week (gw) 4, staining was observed in the early mesenchymal bone anlagen. In gw 6.5 and 8, all perichondrial structures showed expression but the chondrocytes themselves showed no staining. In gw 10, expression is prominent in the interterritorial matrix surrounding the hypertrophic chondrocytes.

細胞内局在 Secreted > extracellular space > extracellular matrix.



Western blot - Anti-Fibulin 1 antibody [EPR10913] (ab175204)

All lanes : Anti-Fibulin 1 antibody [EPR10913] (ab175204) at 1/1000 dilution

Lane 1 : Human placenta tissue lysate

Lane 2 : Fetal liver tissue lysate

Lane 3 : Fetal heart tissue lysate

Lysates/proteins at 1/10 dilution per lane.

Predicted band size: 77 kDa

Additional bands at: 95 kDa. We are unsure as to the identity of these extra bands.

Why choose a recombinant antibody?



Research with confidence
Consistent and reproducible results



Long-term and scalable supply
Recombinant technology



Success from the first experiment
Confirmed specificity



Ethical standards compliant
Animal-free production

Anti-Fibulin 1 antibody [EPR10913] (ab175204)

Please note: All products are "FOR RESEARCH USE ONLY. NOT FOR USE IN DIAGNOSTIC PROCEDURES"

Our Abpromise to you: Quality guaranteed and expert technical support

- Replacement or refund for products not performing as stated on the datasheet
- Valid for 12 months from date of delivery
- Response to your inquiry within 24 hours
- We provide support in Chinese, English, French, German, Japanese and Spanish
- Extensive multi-media technical resources to help you
- We investigate all quality concerns to ensure our products perform to the highest standards

If the product does not perform as described on this datasheet, we will offer a refund or replacement. For full details of the Abpromise, please visit <https://www.abcam.co.jp/abpromise> or contact our technical team.

Terms and conditions

- Guarantee only valid for products bought direct from Abcam or one of our authorized distributors