

Anti-Fibroblast activation protein, alpha antibody ab28244

★★★★★ [2 Abreviews](#) [57 References](#) [画像数 1](#)

製品の概要

製品名	Anti-Fibroblast activation protein, alpha antibody
製品の詳細	Rabbit polyclonal to Fibroblast activation protein, alpha
由来種	Rabbit
特異性	This antibody recognizes the Stalk Region of both long isoforms of Fibroblast activation protein, alpha but does not recognize other DPP family members.
アプリケーション	適用あり: WB
種交差性	交差種: Recombinant fragment
免疫原	Synthetic peptide within Human Fibroblast activation protein, alpha. The exact sequence is proprietary.
特記事項	<p>The Life Science industry has been in the grips of a reproducibility crisis for a number of years. Abcam is leading the way in addressing this with our range of recombinant monoclonal antibodies and knockout edited cell lines for gold-standard validation. Please check that this product meets your needs before purchasing.</p> <p>If you have any questions, special requirements or concerns, please send us an inquiry and/or contact our Support team ahead of purchase. Recommended alternatives for this product can be found below, along with publications, customer reviews and Q&As</p>

製品の特性

製品の状態	Liquid
保存方法	Shipped at 4°C. Upon delivery aliquot and store at -20°C. Avoid freeze / thaw cycles.
バッファー	Preservative: 0.05% Sodium azide Constituent: 50% Glycerol
精製度	Immunogen affinity purified
ポリ/モノ	ポリクローナル
アイソタイプ	IgG

アプリケーション

The Abpromise guarantee

Abpromise保証は、 次のテスト済みアプリケーションにおけるab28244の使用に適用されます

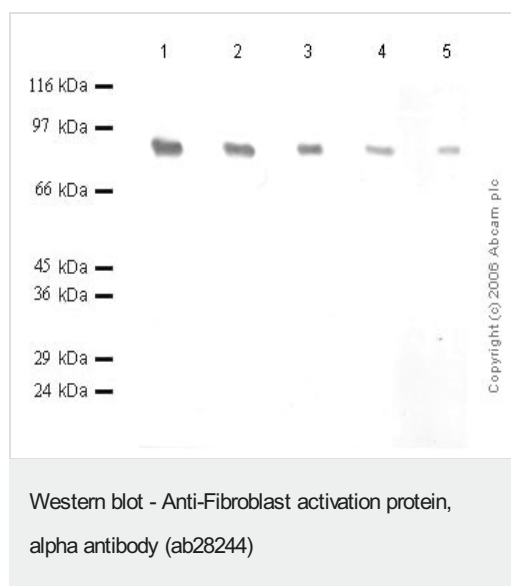
アプリケーションノートには、推奨の開始希釈率がありますが、適切な希釈率につきましてはご確認ください。

アプリケーション	Abreviews	特記事項
WB	★★★★★ (1)	1/1000 - 1/5000. Detects a band of approximately 110-120 kDa (predicted molecular weight: 88 kDa). 1/1000 when using colorimetric substrates such as BCIP/NBT - 1/5000 when using chemiluminescent substrates. Note: EDTA/EGTA treatment of tissues or lysates is required to see latent zymogen. Dilution optimised using Chromogenic detection.

ターゲット情報

機能	In association with DPP4 is involved in the pericellular proteolysis of the extracellular matrix (ECM), the migration and invasion of endothelial cells into the ECM. May have a role in tissue remodeling during development and wound healing, and may contribute to invasiveness in malignant cancers.
組織特異性	Fibroblast specific.
配列類似性	Belongs to the peptidase S9B family.
翻訳後修飾	N-glycosylated. The N-terminus may be blocked.
細胞内局在	Cell membrane. Cell projection > lamellipodium membrane. Cell projection > invadopodium membrane. Found in cell surface lamellipodia, invadopodia and on shed vesicles. Colocalized with DPP4 in invadopodia and lamellipodia of migratory activated endothelial cells in collagenous matrix. Colocalized with DPP4 on endothelial cells of capillary-like microvessels but not large vessels within invasive breast ductal carcinoma.

画像



All lanes : Anti-Fibroblast activation protein, alpha antibody (ab28244) at 1/1000 dilution

Lane 1 : Recombinant Human FAPalpha at 0.08 µg

Lane 2 : Recombinant Human FAPalpha at 0.04 µg

Lane 3 : Recombinant Human FAPalpha at 0.02 µg

Lane 4 : Recombinant Human FAPalpha at 0.01 µg

Lane 5 : Recombinant Human FAPalpha at 0.005 µg

Predicted band size: 88 kDa

Please note: All products are "FOR RESEARCH USE ONLY. NOT FOR USE IN DIAGNOSTIC PROCEDURES"

Our Abpromise to you: Quality guaranteed and expert technical support

- Replacement or refund for products not performing as stated on the datasheet
- Valid for 12 months from date of delivery
- Response to your inquiry within 24 hours

- We provide support in Chinese, English, French, German, Japanese and Spanish
- Extensive multi-media technical resources to help you
- We investigate all quality concerns to ensure our products perform to the highest standards

If the product does not perform as described on this datasheet, we will offer a refund or replacement. For full details of the Abpromise, please visit <https://www.abcam.co.jp/abpromise> or contact our technical team.

Terms and conditions

- Guarantee only valid for products bought direct from Abcam or one of our authorized distributors