

Anti-Fibrinogen beta chain antibody [EPR3082] ab92510

リコンビナント **RabMAb**

画像数 3

製品の概要

製品名	Anti-Fibrinogen beta chain antibody [EPR3082]
製品の詳細	Rabbit monoclonal [EPR3082] to Fibrinogen beta chain
由来種	Rabbit
アプリケーション	適用あり: WB, IHC-P 適用なし: IP
種交差性	交差種: Human
免疫原	Synthetic peptide within Human Fibrinogen beta chain aa 150-250. The exact sequence is proprietary.
ポジティブ・コントロール	WB: Human prostate and Human plasma lysates IHC-P: Human liver tissue
特記事項	<p>This product is a recombinant monoclonal antibody, which offers several advantages including:</p> <ul style="list-style-type: none"> - High batch-to-batch consistency and reproducibility - Improved sensitivity and specificity - Long-term security of supply - Animal-free production <p>For more information see here.</p> <p>Our RabMAb[®] technology is a patented hybridoma-based technology for making rabbit monoclonal antibodies. For details on our patents, please refer to RabMAb[®] patents.</p> <p>Mouse, Rat: We have preliminary internal testing data to indicate this antibody may not react with these species. Please contact us for more information.</p>

製品の特性

製品の状態	Liquid
保存方法	Shipped at 4°C. Upon delivery aliquot and store at -20°C. Avoid repeated freeze / thaw cycles.
バッファー	pH: 7.20 Preservative: 0.01% Sodium azide Constituents: 9% PBS, 40% Glycerol (glycerin, glycerine), 0.05% BSA, 50% Tissue culture supernatant
精製度	Tissue culture supernatant

ポリ/モノ	モノクローナル
クローン名	EPR3082
アイソタイプ	IgG

アプリケーション

The Abpromise guarantee **Abpromise保証は、**次のテスト済みアプリケーションにおけるab92510の使用に適用されます
アプリケーションノートには、推奨の開始希釈率がありますが、適切な希釈率につきましてはご検討ください。

アプリケーション	Abreviews	特記事項
WB		
IHC-P		

追加情報

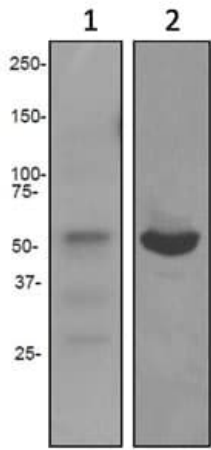
ICC: 1/100.
IHC-P: 1/50 - 1/100. Perform heat mediated antigen retrieval before commencing with IHC staining protocol.
WB: 1/5000 - 1/10000. Predicted molecular weight: 56 kDa.

Is unsuitable for IP.

Not yet tested in other applications.
Optimal dilutions/concentrations should be determined by the end user.

ターゲット情報

機能	Fibrinogen has a double function: yielding monomers that polymerize into fibrin and acting as a cofactor in platelet aggregation.
関連疾患	Defects in FGB are a cause of congenital afibrinogenemia (CAFBN) [MIM:202400]. This rare autosomal recessive disorder is characterized by bleeding that varies from mild to severe and by complete absence or extremely low levels of plasma and platelet fibrinogen. Note=Patients with congenital fibrinogen abnormalities can manifest different clinical pictures. Some cases are clinically silent, some show a tendency toward bleeding and some show a predisposition for thrombosis with or without bleeding.
配列類似性	Contains 1 fibrinogen C-terminal domain.
ドメイン	A long coiled coil structure formed by 3 polypeptide chains connects the central nodule to the C-terminal domains (distal nodules). The long C-terminal ends of the alpha chains fold back, contributing a fourth strand to the coiled coil structure.
翻訳後修飾	Conversion of fibrinogen to fibrin is triggered by thrombin, which cleaves fibrinopeptides A and B from alpha and beta chains, and thus exposes the N-terminal polymerization sites responsible for the formation of the soft clot. The soft clot is converted into the hard clot by factor XIIIa which catalyzes the epsilon-(gamma-glutamyl)lysine cross-linking between gamma chains (stronger) and between alpha chains (weaker) of different monomers.
細胞内局在	Secreted.



Western blot - Anti-Fibrinogen beta chain antibody [EPR3082] (ab92510)

All lanes : Anti-Fibrinogen beta chain antibody [EPR3082] (ab92510) at 1/5000 dilution

Lane 1 : Human prostate lysate

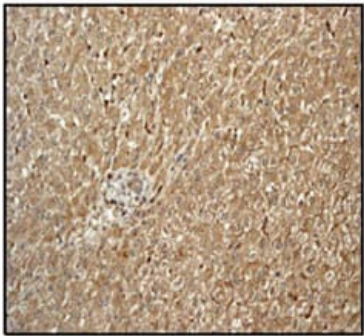
Lane 2 : Human plasma lysate

Lysates/proteins at 10 µg per lane.

Secondary

All lanes : HRP labelled goat anti-rabbit at 1/2000 dilution

Predicted band size: 56 kDa



Immunohistochemistry (Formalin/PFA-fixed paraffin-embedded sections) - Anti-Fibrinogen beta chain antibody [EPR3082] (ab92510)

ab92510, at a 1/50 dilution, staining Fibrinogen beta chain in formalin fixed, paraffin embedded Human liver tissue by Immunohistochemistry. Detection: by DAB staining

Perform heat mediated antigen retrieval via the pressure cooker method before commencing with IHC staining protocol.

Why choose a recombinant antibody?

Research with confidence
Consistent and reproducible results

Long-term and scalable supply
Recombinant technology

Success from the first experiment
Confirmed specificity

Ethical standards compliant
Animal-free production

Anti-Fibrinogen beta chain antibody [EPR3082] (ab92510)

Please note: All products are "FOR RESEARCH USE ONLY. NOT FOR USE IN DIAGNOSTIC PROCEDURES"

Our Abpromise to you: Quality guaranteed and expert technical support

- Replacement or refund for products not performing as stated on the datasheet
- Valid for 12 months from date of delivery
- Response to your inquiry within 24 hours

- We provide support in Chinese, English, French, German, Japanese and Spanish
- Extensive multi-media technical resources to help you
- We investigate all quality concerns to ensure our products perform to the highest standards

If the product does not perform as described on this datasheet, we will offer a refund or replacement. For full details of the Abpromise, please visit <https://www.abcam.co.jp/abpromise> or contact our technical team.

Terms and conditions

- Guarantee only valid for products bought direct from Abcam or one of our authorized distributors