


Anti-FHL2 antibody ab12328

1 References **画像数 5**

製品の概要

製品名	Anti-FHL2 antibody
製品の詳細	Rabbit polyclonal to FHL2
由来種	Rabbit
アプリケーション	適用あり: IP, ICC/IF, IHC-P, WB
種交差性	交差種: Mouse, Human 交差が予測される動物種: Rat, Rabbit, Horse, Guinea pig, Cow, Dog, Chimpanzee, Rhesus monkey, Gorilla, Chinese hamster, Orangutan, Elephant 
免疫原	Synthetic peptide corresponding to Human FHL2. Database link: Q14192
ポジティブ・コントロール	WB: HeLa, TCMK-1 and NIH/3T3 whole cell lysates. IP: HeLa cells. IHC-P: Human breast and ovarian carcinoma tissue.
特記事項	<p>The Life Science industry has been in the grips of a reproducibility crisis for a number of years. Abcam is leading the way in addressing this with our range of recombinant monoclonal antibodies and knockout edited cell lines for gold-standard validation. Please check that this product meets your needs before purchasing.</p> <p>If you have any questions, special requirements or concerns, please send us an inquiry and/or contact our Support team ahead of purchase. Recommended alternatives for this product can be found below, along with publications, customer reviews and Q&As</p>

製品の特性

製品の状態	Liquid
保存方法	Shipped at 4°C. Upon delivery aliquot and store at -20°C. Avoid freeze / thaw cycles.
バッファー	pH: 7 Preservative: 0.1% Sodium azide Constituents: 0.021% PBS, 1.815% Tris, 1.764% Sodium citrate
精製度	Immunogen affinity purified
特記事項(精製)	This antibody is affinity purified.
ポリ/モノ	ポリクローナル
アイソタイプ	IgG

アプリケーション

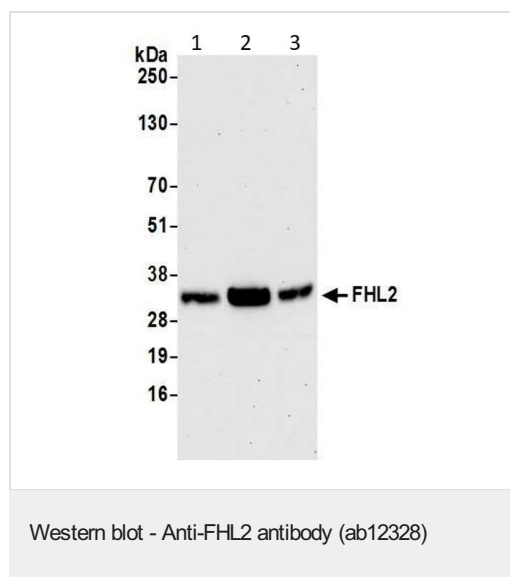
The Abpromise guarantee **Abpromise保証は、** 次のテスト済みアプリケーションにおけるab12328の使用に適用されます
アプリケーションノートには、推奨の開始希釈率がありますが、適切な希釈率につきましてはご確認ください。

アプリケーション	Abreviews	特記事項
IP		Use a concentration of 1 µg/ml.
ICC/IF		Use a concentration of 1 µg/ml.
IHC-P		1/500 - 1/2000. Perform heat mediated antigen retrieval with Tris/EDTA buffer pH 9.0 before commencing with IHC staining protocol.
WB		1/1000 - 1/10000. Detects a band of approximately 32 kDa (predicted molecular weight: 44.6 kDa).

ターゲット情報

機能	May function as a molecular transmitter linking various signaling pathways to transcriptional regulation. Negatively regulates the transcriptional repressor E4F1 and may function in cell growth.
組織特異性	Expressed in skeletal muscle and heart.
配列類似性	Contains 4 LIM zinc-binding domains.
ドメイン	The third LIM zinc-binding mediates interaction with E4F1.
細胞内局在	Cytoplasm. Nucleus.

画像



All lanes : Anti-FHL2 antibody (ab12328) at 0.1 µg/ml

Lane 1 : HeLa (Human cervix adenocarcinoma epithelial cell) whole cell lysate

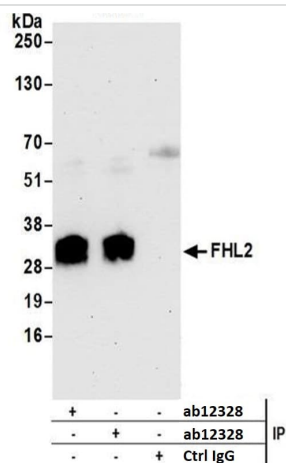
Lane 2 : TCMK-1 (Mouse kidney epithelial cell line) whole cell lysate

Lane 3 : NIH/3T3 (Mouse embryonic fibroblast cell line) whole cell lysate

Lysates/proteins at 50 µg per lane.

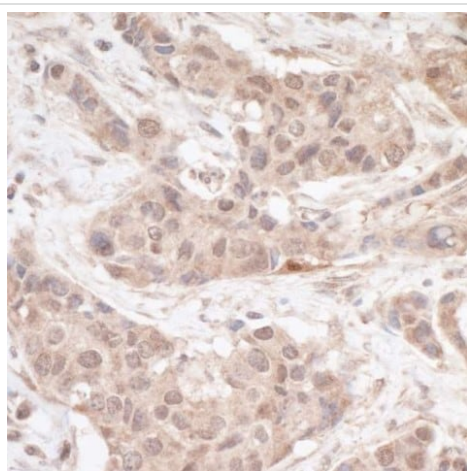
Predicted band size: 44.6 kDa

Exposure time: 30 seconds



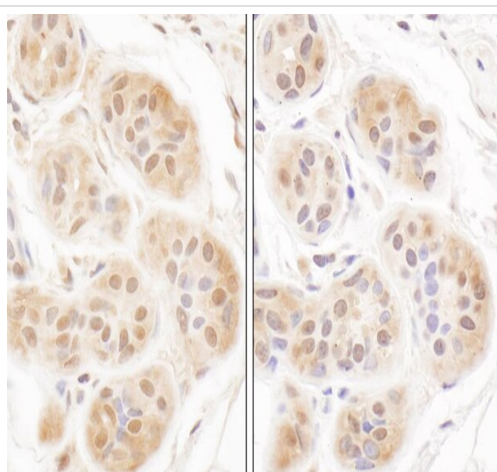
Immunoprecipitation - Anti-FHL2 antibody (ab12328)

FHL2 was immunoprecipitated from HeLa (human epithelial cell line from cervix adenocarcinoma) whole cell lysate (1 mg for IP, 20% of IP loaded) with ab12328 at 3 µg/mg lysate (different LOT numbers). Western blot was performed from the immunoprecipitate using ab12328 at 1 µg/ml.



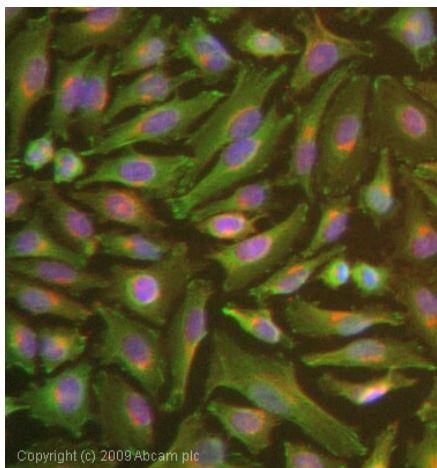
Immunohistochemistry (Formalin/PFA-fixed paraffin-embedded sections) - Anti-FHL2 antibody (ab12328)

Immunohistochemistry (Formalin/PFA-fixed paraffin-embedded sections) analysis of human ovarian carcinoma tissue labelling FHL2 with ab12328 at 1/2000 (0.5 µg/ml). Detection: DAB.



Immunohistochemistry (Formalin/PFA-fixed paraffin-embedded sections) - Anti-FHL2 antibody (ab12328)

Immunohistochemistry (Formalin/PFA-fixed paraffin-embedded sections) analysis of human breast carcinoma tissue labelling FHL2 with ab12328 at 1/1000 (1 µg/ml). Detection: DAB.



Immunocytochemistry/ Immunofluorescence - Anti-FHL2 antibody (ab12328)

ICC image of ab12328 stained HeLa cells. The cells were 4% PFA fixed (10 min) and then incubated in 1%BSA / 10% normal goat serum / 0.3M glycine in 0.1% PBS-Tween for 1h to permeabilise the cells and block non-specific protein-protein interactions. The cells were then incubated with the antibody (ab12328, 1µg/ml) overnight at +4°C. The secondary antibody (green) was Alexa Fluor® 488 goat anti-rabbit IgG (H+L) used at a 1/1000 dilution for 1h. Alexa Fluor® 594 WGA was used to label plasma membranes (red) at a 1/200 dilution for 1h. DAPI was used to stain the cell nuclei (blue) at a concentration of 1.43µM.

Please note: All products are "FOR RESEARCH USE ONLY. NOT FOR USE IN DIAGNOSTIC PROCEDURES"

Our Abpromise to you: Quality guaranteed and expert technical support

- Replacement or refund for products not performing as stated on the datasheet
- Valid for 12 months from date of delivery
- Response to your inquiry within 24 hours
- We provide support in Chinese, English, French, German, Japanese and Spanish
- Extensive multi-media technical resources to help you
- We investigate all quality concerns to ensure our products perform to the highest standards

If the product does not perform as described on this datasheet, we will offer a refund or replacement. For full details of the Abpromise, please visit <https://www.abcam.co.jp/abpromise> or contact our technical team.

Terms and conditions

- Guarantee only valid for products bought direct from Abcam or one of our authorized distributors