

# Anti-FH/Fumarase antibody [8F12BB5] ab110286

**1 References** [画像数 4](#)

### 製品の概要

製品名	Anti-FH/Fumarase antibody [8F12BB5]
製品の詳細	Mouse monoclonal [8F12BB5] to FH/Fumarase
由来種	Mouse
アプリケーション	<b>適用あり:</b> IP, IHC-P, ICC/IF, Flow Cyt
種交差性	<b>交差種:</b> Rat, Cow, Human
免疫原	Full length native protein (purified). This information is considered to be commercially sensitive.
ポジティブ・コントロール	Human HDFn cells; Human cerebellum tissue; HepG2 cells, human liver mitochondria, bovine liver mitochondria, and rat liver mitochondria; HeLa cells
特記事項	<p>This antibody clone is manufactured by Abcam. If you require a custom buffer formulation or conjugation for your experiments, please contact <a href="mailto:orders@abcam.com">orders@abcam.com</a>.</p> <p>The Life Science industry has been in the grips of a reproducibility crisis for a number of years. Abcam is leading the way in addressing this with our range of recombinant monoclonal antibodies and knockout edited cell lines for gold-standard validation. Please check that this product meets your needs before purchasing.</p> <p>If you have any questions, special requirements or concerns, please send us an inquiry and/or contact our Support team ahead of purchase. Recommended alternatives for this product can be found below, along with publications, customer reviews and Q&amp;As</p> <p>Product was previously marketed under the MitoSciences sub-brand.</p>

### 製品の特性

製品の状態	Liquid
保存方法	Shipped at 4°C. Store at +4°C. Do Not Freeze.
バッファー	pH: 7.5 Preservative: 0.02% Sodium azide Constituent: HEPES buffered saline
精製度	Ammonium Sulphate Precipitation
特記事項 (精製)	Purity near homogeneity as judged by SDS-PAGE. The antibody was produced in-vitro using hybridomas grown in serum-free medium and then purified by biochemical fractionation.
ポリ/モノ	モノクローナル

クローン名	8F12BB5
アイソタイプ	IgG2a
軽鎖の種類	kappa

アプリケーション

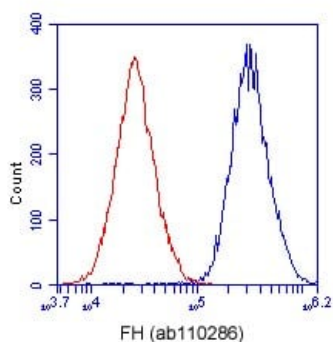
The Abpromise guarantee      Abpromise保証は、次のテスト済みアプリケーションにおけるab110286の使用に適用されます  
 アプリケーションノートには、推奨の開始希釈率がありますが、適切な希釈率につきましてはご検討ください。

アプリケーション	Abreviews	特記事項
IP		Use at an assay dependent concentration.
IHC-P		Use at an assay dependent concentration. Perform heat mediated antigen retrieval - 1 min pressure cook in 1mmol EDTA pH8.
ICC/IF		Use a concentration of 5 µg/ml.
Flow Cyt		Use a concentration of 1 µg/ml. Recommend 0.1% Triton X-100 permeabilization.  <b>ab170191</b> - Mouse monoclonal IgG2a is suitable for use as an

ターゲット情報

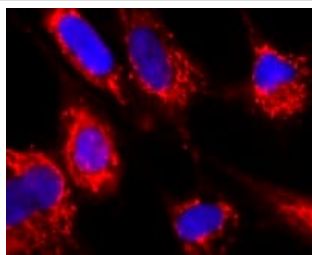
機能	Also acts as a tumor suppressor.
パスウェイ	Carbohydrate metabolism; tricarboxylic acid cycle; (S)-malate from fumarate: step 1/1.
関連疾患	Defects in FH are the cause of fumarase deficiency (FHD) [MIM:606812]; also known as fumaricaciduria. FHD is characterized by progressive encephalopathy, developmental delay, hypotonia, cerebral atrophy and lactic and pyruvic acidemia. Defects in FH are the cause of multiple cutaneous and uterine leiomyomata (MCUL1) [MIM:150800]. MCUL1 is an autosomal dominant condition in which affected individuals develop benign smooth muscle tumors (leiomyomata) of the skin. Affected females also usually develop leiomyomata of the uterus (fibroids). Defects in FH are the cause of hereditary leiomyomatosis and renal cell cancer (HLRCC) [MIM:605839].
配列類似性	Belongs to the class-II fumarase/aspartase family. Fumarase subfamily.
細胞内局在	Cytoplasm and Mitochondrion.

画像



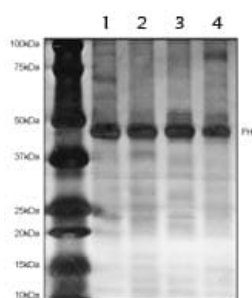
Flow Cytometry - Anti-FH/Fumarase antibody  
[8F12BB5] (ab110286)

HeLa cells were stained with 1  $\mu\text{g/mL}$  ab110286 (blue) or an equal amount of an isotype control antibody (red) and analyzed by flow cytometry.



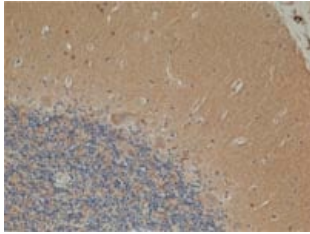
Immunocytochemistry/ Immunofluorescence - Anti-FH/Fumarase antibody [8F12BB5] (ab110286)

Immunocytochemistry image of FH/Fumarase (ab110286) stained human HDFn cells. The cells were paraformaldehyde fixed (4%, 20 min) and Triton X-100 permeabilized (0.1%, 15min). The cells were incubated with ab110286 at 5 $\mu\text{g/mL}$  for 2h at room temperature or over night at 4°C. The secondary antibody was (red) Alexa Fluor® 594 goat anti-mouse IgG (H+L) used at a 1/1000 dilution for 1h. 10% Goat serum was used as the blocking agent for all blocking steps. DAPI was used to stain the cell nuclei (blue). Target protein locates mainly in mitochondria.



Immunoprecipitation - Anti-FH/Fumarase antibody  
[8F12BB5] (ab110286)

FH/Fumarase immunocaptured from HepG2 cells (Lane 1), human liver mitochondria (Lane 2), bovine liver mitochondria (Lane 3), and rat liver mitochondria (Lane 4) using ab110286.



ab110286 staining FH/Fumarase in formalin-fixed, paraffin-embedded human cerebellum tissue by Immunohistochemistry at 5ug/ml. FH/Fumarase immunoactivity is most intense in neuronal cell bodies, most notably in the large Purkinje cells.

Immunohistochemistry (Formalin/PFA-fixed paraffin-embedded sections) - Anti-FH/Fumarase antibody [8F12BB5] (ab110286)

**Please note:** All products are "FOR RESEARCH USE ONLY. NOT FOR USE IN DIAGNOSTIC PROCEDURES"

### Our Abpromise to you: Quality guaranteed and expert technical support

---

- Replacement or refund for products not performing as stated on the datasheet
- Valid for 12 months from date of delivery
- Response to your inquiry within 24 hours
- We provide support in Chinese, English, French, German, Japanese and Spanish
- Extensive multi-media technical resources to help you
- We investigate all quality concerns to ensure our products perform to the highest standards

If the product does not perform as described on this datasheet, we will offer a refund or replacement. For full details of the Abpromise, please visit <https://www.abcam.co.jp/abpromise> or contact our technical team.

### Terms and conditions

---

- Guarantee only valid for products bought direct from Abcam or one of our authorized distributors