

# Anti-FGFBP1 antibody ab67931

**1 References** [画像数 1](#)

### 製品の概要

製品名	Anti-FGFBP1 antibody
製品の詳細	Mouse polyclonal to FGFBP1
由来種	Mouse
アプリケーション	<b>適用あり:</b> WB
種交差性	<b>交差種:</b> Human
免疫原	Recombinant full length protein within Human FGFBP1. The exact immunogen sequence used to generate this antibody is proprietary information. If additional detail on the immunogen is needed to determine the suitability of the antibody for your needs, please <b><u>contact</u></b> our Scientific Support team to discuss your requirements.
特記事項	<p>The Life Science industry has been in the grips of a reproducibility crisis for a number of years. Abcam is leading the way in addressing this with our range of recombinant monoclonal antibodies and knockout edited cell lines for gold-standard validation. Please check that this product meets your needs before purchasing.</p> <p>If you have any questions, special requirements or concerns, please send us an inquiry and/or contact our Support team ahead of purchase. Recommended alternatives for this product can be found below, along with publications, customer reviews and Q&amp;As</p>

### 製品の特性

製品の状態	Liquid
保存方法	Shipped at 4°C. Upon delivery aliquot and store at -20°C or -80°C. Avoid repeated freeze / thaw cycles.
バッファー	pH: 7.40 Constituent: 100% PBS
精製度	Protein A purified
ポリ/モノ	ポリクローナル
アイソタイプ	IgG

### アプリケーション

## The Abpromise guarantee

**Abpromise保証は、次のテスト済みアプリケーションにおけるab67931の使用に適用されます**

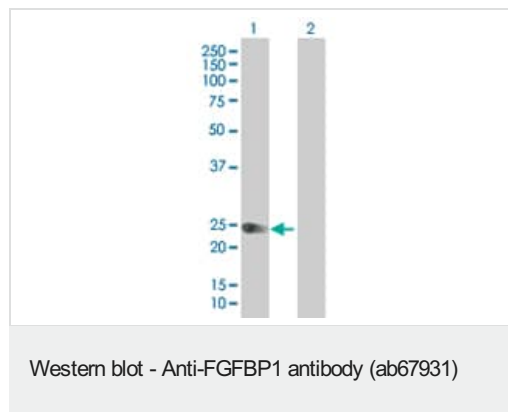
アプリケーションノートには、推奨の開始希釈率がありますが、適切な希釈率につきましてはご検討ください。

アプリケーション	Abreviews	特記事項
WB		1/500 - 1/1000. Detects a band of approximately 25 kDa (predicted molecular weight: 26 kDa).

## ターゲット情報

機能	Acts as a carrier protein that release fibroblast-binding factors (FGFs) from the extracellular matrix (EM) storage and thus enhance the mitogenic activity of FGFs. Enhances FGF2 signaling during tissue repair, angiogenesis and in tumor growth.
組織特異性	Expressed in the suprabasal region of the epidermis, in hair follicles, the basement membrane at the dermo-epidermal junction (occasionally extending into the basement membrane of dermal blood vessels), wounded skin and several invasive squamous cell carcinomas (at protein level). Expressed in normal and wounded skin and various squamous cell carcinomas.
配列類似性	Belongs to the fibroblast growth factor-binding protein family.
細胞内局在	Secreted, extracellular space. Cell membrane. Extracellular and plasma membrane-associated. Colocalizes with HSPG2 in the pericellular environment of squamous cell carcinomas.

## 画像



**All lanes :** Anti-FGFBP1 antibody (ab67931) at 1/500 dilution

**Lane 1 :** FGFBP1 transfected 293T cell lysate

**Lane 2 :** Non-transfected 293T cell lysate

Lysates/proteins at 25 µg per lane.

### Secondary

**All lanes :** Goat Anti-Mouse IgG (H&L)-HRP conjugated at 1/2500 dilution

**Predicted band size:** 26 kDa

**Observed band size:** 25 kDa

**Please note:** All products are "FOR RESEARCH USE ONLY. NOT FOR USE IN DIAGNOSTIC PROCEDURES"

## Our Abpromise to you: Quality guaranteed and expert technical support

- Replacement or refund for products not performing as stated on the datasheet

- Valid for 12 months from date of delivery
- Response to your inquiry within 24 hours
- We provide support in Chinese, English, French, German, Japanese and Spanish
- Extensive multi-media technical resources to help you
- We investigate all quality concerns to ensure our products perform to the highest standards

If the product does not perform as described on this datasheet, we will offer a refund or replacement. For full details of the Abpromise, please visit <https://www.abcam.co.jp/abpromise> or contact our technical team.

#### **Terms and conditions**

---

- Guarantee only valid for products bought direct from Abcam or one of our authorized distributors