


### Anti-FGF5 antibody ab88118

★★★★★ [2 Abreviews](#) [5 References](#) [画像数 2](#)

#### 製品の概要

製品名	Anti-FGF5 antibody
製品の詳細	Rabbit polyclonal to FGF5
由来種	Rabbit
特異性	From Jan 2024, QC testing of replenishment batches of this polyclonal changed. All tested and expected application and reactive species combinations are still covered by our Abcam product promise. However, we no longer test all applications. For more information on a specific batch, please contact our Scientific Support who will be happy to help.
アプリケーション	<b>適用あり:</b> WB, ICC/IF
種交差性	<b>交差種:</b> Mouse, Human <b>交差が予測される動物種:</b> Rabbit, Cow, Dog 
免疫原	Synthetic peptide corresponding to Human FGF5 aa 1-100 conjugated to keyhole limpet haemocyanin. (Peptide available as <a href="#">ab106210</a> )
ポジティブ・コントロール	Recombinant human FGF5 protein ( <a href="#">ab50229</a> ) can be used as a positive control in WB. This antibody gave a positive signal in the following tissues lysates: E14 Mouse Embryo Brain; E16 Ms Embryo Brain; E18 Ms Embryo Brain ICC/IF: NIH3T3 cells.
特記事項	<p>The Life Science industry has been in the grips of a reproducibility crisis for a number of years. Abcam is leading the way in addressing this with our range of recombinant monoclonal antibodies and knockout edited cell lines for gold-standard validation. Please check that this product meets your needs before purchasing.</p> <p>If you have any questions, special requirements or concerns, please send us an inquiry and/or contact our Support team ahead of purchase. Recommended alternatives for this product can be found below, along with publications, customer reviews and Q&amp;As</p>

#### 製品の特性

製品の状態	Liquid
保存方法	Shipped at 4°C. Store at +4°C short term (1-2 weeks). Upon delivery aliquot. Store at -20°C or -80°C. Avoid freeze / thaw cycle.
バッファー	pH: 7.40 Preservative: 0.02% Sodium azide

Constituent: PBS

Batches of this product that have a concentration < 1mg/ml may have BSA added as a stabilising agent. If you would like information about the formulation of a specific lot, please contact our scientific support team who will be happy to help.

精製度 Immunogen affinity purified  
ポリモノ ポリクローナル  
アイソタイプ IgG

## アプリケーション

**The Abpromise guarantee** Abpromise保証は、次のテスト済みアプリケーションにおけるab88118の使用に適用されます  
アプリケーションノートには、推奨の開始希釈率がありますが、適切な希釈率につきましてはご検討ください。

アプリケーション	Abreviews	特記事項
WB	★★★★★ (1)	Use a concentration of 1 µg/ml. Detects a band of approximately 30 kDa (predicted molecular weight: 30 kDa).
ICC/IF		Use a concentration of 5 µg/ml.

## ターゲット情報

機能 Functions as an inhibitor of hair elongation by promoting progression from anagen, the growth phase of the hair follicle, into catagen the apoptosis-induced regression phase.

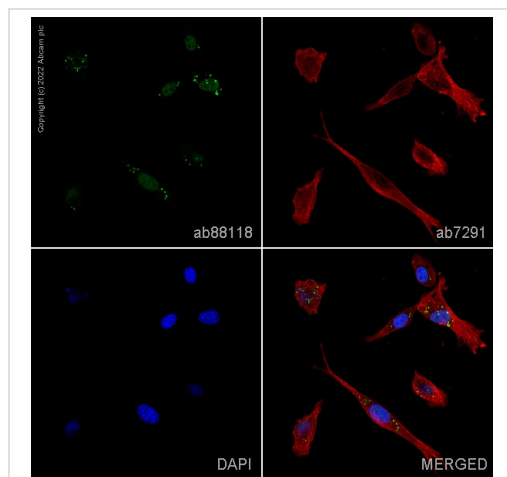
組織特異性 Expressed in neonatal brain.

配列類似性 Belongs to the heparin-binding growth factors family.

発生段階 Can transform NIH 3T3 cells.

細胞内局在 Secreted.

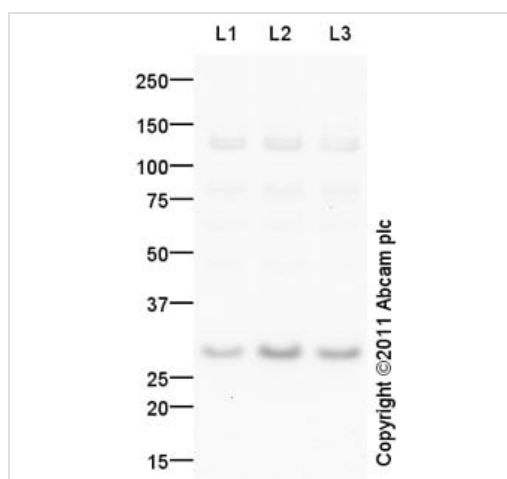
## 画像



Immunocytochemistry/ Immunofluorescence - Anti-FGF5 antibody (ab88118)

ab88118 staining FGF5 in NIH3T3 cells. The cells were fixed with 4% paraformaldehyde (10 min), permeabilized with 0.1% PBS-Tween for 5 minutes and then blocked with 1% BSA/10% normal goat serum/0.3M glycine in 0.1%PBS-Tween for 1h. The cells were then incubated overnight at 4°C with ab88118 at 1µg/ml and **ab7291**, Mouse monoclonal [DM1A] to alpha Tubulin - Loading Control. Cells were then incubated with **ab150081**, Goat polyclonal Secondary Antibody to Rabbit IgG - H&L (Alexa Fluor® 488), pre-adsorbed at 1/1000 dilution (shown in green) and **ab150120**, Goat polyclonal Secondary Antibody to Mouse IgG - H&L (Alexa Fluor® 594), pre-adsorbed at 1/1000 dilution (shown in pseudocolour red). Nuclear DNA was labelled with DAPI (shown in blue).

Image was acquired with a high-content analyser (Operetta CLS, Perkin Elmer) and a maximum intensity projection of confocal sections is shown.



Western blot - Anti-FGF5 antibody (ab88118)

**All lanes :** Anti-FGF5 antibody (ab88118) at 1 µg/ml

**Lane 1 :** E14 Mouse Embryo Brain Tissue Lysate

**Lane 2 :** E16 Ms Embryo Brain Tissue Lysate

**Lane 3 :** E18 Ms Embryo Brain Tissue Lysate

Lysates/proteins at 10 µg per lane.

#### Secondary

**All lanes :** Goat Anti-Rabbit IgG H&L (HRP) preadsorbed (**ab97080**) at 1/5000 dilution

Developed using the ECL technique.

Performed under reducing conditions.

**Predicted band size:** 30 kDa

**Observed band size:** 30 kDa

**Additional bands at:** 125 kDa. We are unsure as to the identity of these extra bands.

**Exposure time:** 2 minutes

**Please note:** All products are "FOR RESEARCH USE ONLY. NOT FOR USE IN DIAGNOSTIC PROCEDURES"

**Our Abpromise to you: Quality guaranteed and expert technical support**

- 
- Replacement or refund for products not performing as stated on the datasheet
  - Valid for 12 months from date of delivery
  - Response to your inquiry within 24 hours
  
  - We provide support in Chinese, English, French, German, Japanese and Spanish
  - Extensive multi-media technical resources to help you
  - We investigate all quality concerns to ensure our products perform to the highest standards

If the product does not perform as described on this datasheet, we will offer a refund or replacement. For full details of the Abpromise, please visit <https://www.abcam.co.jp/abpromise> or contact our technical team.

#### **Terms and conditions**

---

- Guarantee only valid for products bought direct from Abcam or one of our authorized distributors