


# Anti-FGF10 antibody ab71794

4 References [画像数 1](#)

### 製品の概要

製品名	Anti-FGF10 antibody
製品の詳細	Rabbit polyclonal to FGF10
由来種	Rabbit
特異性	From Jan 2024, QC testing of replenishment batches of this polyclonal changed. All tested and expected application and reactive species combinations are still covered by our Abcam product promise. However, we no longer test all applications. For more information on a specific batch, please contact our Scientific Support who will be happy to help.
アプリケーション	適用あり: WB
種交差性	交差種: Human 交差が予測される動物種: Mouse, Rat, Sheep, Cow, Non human primates 
免疫原	Synthetic peptide conjugated to KLH derived from within residues 50 - 150 of Human FGF10.Immunogen の所有権に関して(Peptide available as <a href="#">ab90831</a> .)
ポジティブ・コントロール	WB: Human lung tissue and A549 whole cell lysates.
特記事項	<p>The Life Science industry has been in the grips of a reproducibility crisis for a number of years. Abcam is leading the way in addressing this with our range of recombinant monoclonal antibodies and knockout edited cell lines for gold-standard validation. Please check that this product meets your needs before purchasing.</p> <p>If you have any questions, special requirements or concerns, please send us an inquiry and/or contact our Support team ahead of purchase. Recommended alternatives for this product can be found below, along with publications, customer reviews and Q&amp;As</p>

### 製品の特性

製品の状態	Liquid
保存方法	Shipped at 4°C. Store at +4°C short term (1-2 weeks). Upon delivery aliquot. Store at -20°C or -80°C. Avoid freeze / thaw cycle.
バッファー	pH: 7.40 Preservative: 0.02% Sodium azide Constituent: PBS
	Batches of this product that have a concentration < 1mg/ml may have BSA added as a stabilising

agent. If you would like information about the formulation of a specific lot, please contact our scientific support team who will be happy to help.

精製度	Immunogen affinity purified
ポリ/モノ	ポリクローナル
アイソタイプ	IgG

## アプリケーション

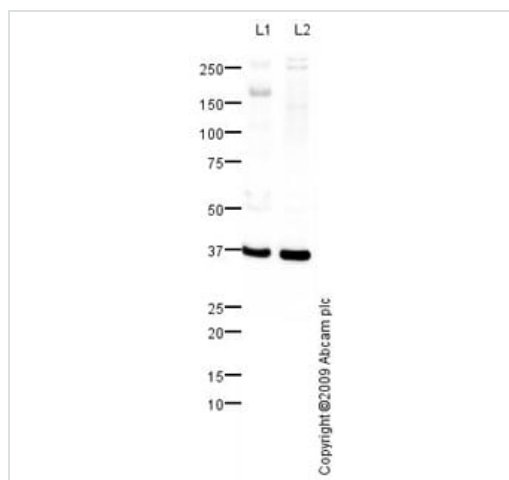
**The Abpromise guarantee**      **Abpromise保証は、次のテスト済みアプリケーションにおけるab71794の使用に適用されます**  
アプリケーションノートには、推奨の開始希釈率がありますが、適切な希釈率につきましてはご確認ください。

アプリケーション	Abreviews	特記事項
WB		Use a concentration of 1 µg/ml. Detects a band of approximately 37 kDa (predicted molecular weight: 23 kDa).

## ターゲット情報

機能	Could be a growth factor active in the process of wound healing. Acts as a mitogen in the lung. May act in a manner similar to FGF-7.
関連疾患	Defects in FGF10 are the cause of autosomal dominant aplasia of lacrimal and salivary glands (ALSG) [MIM:180920]. ALSG has variable expressivity, and affected individuals may have aplasia or hypoplasia of the lacrimal, parotid, submandibular and sublingual glands and absence of the lacrimal puncta. The disorder is characterized by irritable eyes, recurrent eye infections, epiphora (constant tearing) and xerostomia (dryness of the mouth), which increases the risk of dental erosion, dental caries, periodontal disease and oral infections. Defects in FGF10 are a cause of lacrimo-auriculo-dento-digital syndrome (LADDs) [MIM:149730]; also known as Levy-Hollister syndrome. LADDs is a form of ectodermal dysplasia, a heterogeneous group of disorders due to abnormal development of two or more ectodermal structures. LADDs is an autosomal dominant syndrome characterized by aplastic/hypoplastic lacrimal and salivary glands and ducts, cup-shaped ears, hearing loss, hypodontia and enamel hypoplasia, and distal limb segments anomalies. In addition to these cardinal features, facial dysmorphism, malformations of the kidney and respiratory system and abnormal genitalia have been reported. Craniosynostosis and severe syndactyly are not observed.
配列類似性	Belongs to the heparin-binding growth factors family.
細胞内局在	Secreted.

## 画像



Western blot - Anti-FGF10 antibody (ab71794)

**All lanes :** Anti-FGF10 antibody (ab71794) at 1 µg/ml

**Lane 1 :** Lung (Human) Tissue Lysate

**Lane 2 :** A549 (Human lung adenocarcinoma epithelial cell line)

Whole Cell Lysate

Lysates/proteins at 10 µg per lane.

### Secondary

**All lanes :** Goat polyclonal to Rabbit IgG - H&L - Pre-Adsorbed (HRP) at 1/3000 dilution

Developed using the ECL technique.

Performed under reducing conditions.

**Predicted band size:** 23 kDa

**Observed band size:** 37 kDa

**Additional bands at:** 170 kDa. We are unsure as to the identity of these extra bands.

**Exposure time:** 1 minute

FGF10 contains a number of potential glycosylation sites (SwissProt) which may explain its migration at a higher molecular weight than predicted. Furthermore, the 37 kDa band observed is comparable to the molecular weight seen with other commercially available antibodies to FGF10.

**Please note:** All products are "FOR RESEARCH USE ONLY. NOT FOR USE IN DIAGNOSTIC PROCEDURES"

### Our Abpromise to you: Quality guaranteed and expert technical support

- Replacement or refund for products not performing as stated on the datasheet
- Valid for 12 months from date of delivery
- Response to your inquiry within 24 hours

- We provide support in Chinese, English, French, German, Japanese and Spanish
- Extensive multi-media technical resources to help you
- We investigate all quality concerns to ensure our products perform to the highest standards

If the product does not perform as described on this datasheet, we will offer a refund or replacement. For full details of the Abpromise, please visit <https://www.abcam.co.jp/abpromise> or contact our technical team.

#### **Terms and conditions**

---

- Guarantee only valid for products bought direct from Abcam or one of our authorized distributors