



Anti-FGF 23 antibody ab56326

10 References [画像数 2](#)

製品の概要

製品名	Anti-FGF 23 antibody
製品の詳細	Goat polyclonal to FGF 23
由来種	Goat
アプリケーション	適用あり: WB, ICC/IF
種交差性	交差種: Human
免疫原	Synthetic peptide: C-RHTRSAEDDSERD , corresponding to internal sequence amino acids 176-188 of Human FGF 23  Run BLAST with  Run BLAST with
ポジティブ・コントロール	Human Brain (Hippocampus) lysate.
特記事項	<p>The Life Science industry has been in the grips of a reproducibility crisis for a number of years. Abcam is leading the way in addressing this with our range of recombinant monoclonal antibodies and knockout edited cell lines for gold-standard validation. Please check that this product meets your needs before purchasing.</p> <p>If you have any questions, special requirements or concerns, please send us an inquiry and/or contact our Support team ahead of purchase. Recommended alternatives for this product can be found below, along with publications, customer reviews and Q&As</p>

製品の特性

製品の状態	Liquid
保存方法	Shipped at 4°C. Upon delivery aliquot and store at -20°C. Avoid freeze / thaw cycles.
バッファー	pH: 7.30 Preservative: 0.02% Sodium azide Constituents: 0.5% BSA, Tris buffered saline
精製度	Immunogen affinity purified
特記事項 (精製)	Purified from goat serum by ammonium sulphate precipitation followed by antigen affinity chromatography using the immunizing peptide.
ポリ/モノ	ポリクローナル
アイソタイプ	IgG

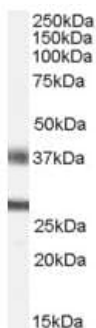
The Abpromise guarantee **Abpromise保証は、** 次のテスト済みアプリケーションにおけるab56326の使用に適用されます
アプリケーションノートには、推奨の開始希釈率がありますが、適切な希釈率につきましてはご検討ください。

アプリケーション	Abreviews	特記事項
WB		Use a concentration of 0.3 - 1 µg/ml. Detects a band of approximately 27 kDa (predicted molecular weight: 28 kDa). A 1 hour primary incubation is recommended for this product. An additional band of unknown identity was also consistently observed at 37kDa. This band was successfully blocked by incubation with the immunising peptide.
ICC/IF		Use a concentration of 1 µg/ml.

ターゲット情報

機能	Regulator of phosphate homeostasis. Inhibits renal tubular phosphate transport by reducing SLC34A1 levels. Upregulates EGR1 expression in the presence of KL (By similarity). Acts directly on the parathyroid to decrease PTH secretion (By similarity). Regulator of vitamin-D metabolism. Negatively regulates osteoblast differentiation and matrix mineralization.
組織特異性	Expressed in osteogenic cells particularly during phases of active bone remodeling. In adult trabecular bone, expressed in osteocytes and flattened bone-lining cells (inactive osteoblasts).
関連疾患	Defects in FGF23 are the cause of autosomal dominant hypophosphataemic rickets (ADHR) [MIM:193100]. ADHR is characterized by low serum phosphorus concentrations, rickets, osteomalacia, leg deformities, short stature, bone pain and dental abscesses. Defects in FGF23 are a cause of hyperphosphatemic familial tumoral calcinosis (HFTC) [MIM:211900]. HFTC is a severe autosomal recessive metabolic disorder that manifests with hyperphosphatemia and massive calcium deposits in the skin and subcutaneous tissues.
配列類似性	Belongs to the heparin-binding growth factors family.
翻訳後修飾	Following secretion this protein is inactivated by cleavage into a N-terminal fragment and a C-terminal fragment. The processing is effected by proprotein convertases. O-glycosylated by GALT3. Glycosylation is necessary for secretion; it blocks processing by proprotein convertases when the O-glycan is alpha 2,6-sialylated. Competition between proprotein convertase cleavage and block of cleavage by O-glycosylation determines the level of secreted active FGF23.
細胞内局在	Secreted. Secretion is dependent on O-glycosylation.

画像



Western blot - Anti-FGF 23 antibody (ab56326)

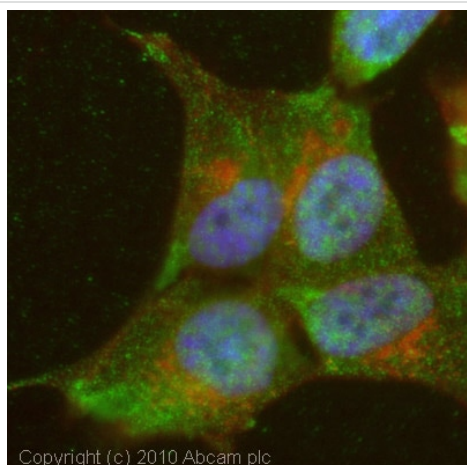
Anti-FGF 23 antibody (ab56326) at 0.5 µg/ml + Human Brain (Hippocampus) lysate (35µg protein in RIPA buffer)

Predicted band size: 28 kDa

Observed band size: 27 kDa

Additional bands at: 37 kDa. We are unsure as to the identity of these extra bands.

Primary incubation was 1 hour. Detected by chemiluminescence.



Immunocytochemistry/ Immunofluorescence - Anti-FGF 23 antibody (ab56326)

ICC/IF image of ab56326 stained SHSY5Y cells. The cells were 4% formaldehyde fixed (10 min) and then incubated in 1%BSA / 10% normal donkey serum / 0.3M glycine in 0.1% PBS-Tween for 1h to permeabilise the cells and block non-specific protein-protein interactions. The cells were then incubated with the antibody (ab56326, 1µg/ml) overnight at +4°C. The secondary antibody (green) was Alexa Fluor® 488 donkey anti-goat IgG (H+L) used at a 1/1000 dilution for 1h. Alexa Fluor® 594 WGA was used to label plasma membranes (red) at a 1/200 dilution for 1h. DAPI was used to stain the cell nuclei (blue) at a concentration of 1.43µM.

Please note: All products are "FOR RESEARCH USE ONLY. NOT FOR USE IN DIAGNOSTIC PROCEDURES"

Our Abpromise to you: Quality guaranteed and expert technical support

- Replacement or refund for products not performing as stated on the datasheet
- Valid for 12 months from date of delivery
- Response to your inquiry within 24 hours
- We provide support in Chinese, English, French, German, Japanese and Spanish
- Extensive multi-media technical resources to help you
- We investigate all quality concerns to ensure our products perform to the highest standards

If the product does not perform as described on this datasheet, we will offer a refund or replacement. For full details of the Abpromise, please visit <https://www.abcam.co.jp/abpromise> or contact our technical team.

Terms and conditions

- Guarantee only valid for products bought direct from Abcam or one of our authorized distributors