


Anti-FGF 23 antibody ab123502

[1 Abreviews](#) [画像数 2](#)

製品の概要

| | |
|--------------|---|
| 製品名 | Anti-FGF 23 antibody |
| 製品の詳細 | Goat polyclonal to FGF 23 |
| 由来種 | Goat |
| アプリケーション | 適用あり: WB |
| 種交差性 | 交差種: Mouse 交差が予測される動物種: Rat  |
| 免疫原 | Synthetic peptide with sequence C- ENGYDVYLSQKHH , corresponding to internal sequence amino acids 121-133 of Mouse FGF 23 (NP_073148.1) Run BLAST with Run BLAST with |
| ポジティブ・コントロール | Mouse Brain and testes lysate |
| 特記事項 | <p>The Life Science industry has been in the grips of a reproducibility crisis for a number of years. Abcam is leading the way in addressing this with our range of recombinant monoclonal antibodies and knockout edited cell lines for gold-standard validation. Please check that this product meets your needs before purchasing.</p> <p>If you have any questions, special requirements or concerns, please send us an inquiry and/or contact our Support team ahead of purchase. Recommended alternatives for this product can be found below, along with publications, customer reviews and Q&As</p> |

製品の特性

| | |
|-----------|---|
| 製品の状態 | Liquid |
| 保存方法 | Shipped at 4°C. Upon delivery aliquot and store at -20°C. Avoid freeze / thaw cycles. |
| バッファー | pH: 7.30 Preservative: 0.02% Sodium azide Constituents: 99% Tris buffered saline, 0.5% BSA |
| 精製度 | Immunogen affinity purified |
| 特記事項 (精製) | Purified from goat serum by ammonium sulphate precipitation followed by antigen affinity chromatography using the immunizing peptide. |
| ポリ/モノ | ポリクローナル |

アプリケーション

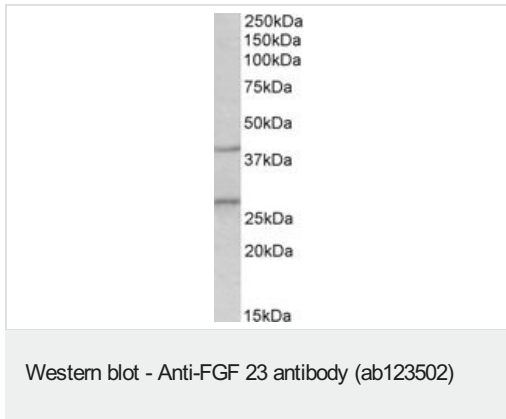
The Abpromise guarantee **Abpromise保証は、次のテスト済みアプリケーションにおけるab123502の使用に適用されず**
アプリケーションノートには、推奨の開始希釈率がありますが、適切な希釈率につきましてはご検討ください。

| アプリケーション | Abreviews | 特記事項 |
|----------|-----------|--|
| WB | | Use a concentration of 0.3 - 1 µg/ml. Detects a band of approximately 27, 38 kDa (predicted molecular weight: 28 kDa). A 1 hour primary incubation is recommended for this product. When using mouse brain lysate: |

ターゲット情報

| | |
|--------------|---|
| 機能 | Regulator of phosphate homeostasis. Inhibits renal tubular phosphate transport by reducing SLC34A1 levels. Upregulates EGR1 expression in the presence of KL (By similarity). Acts directly on the parathyroid to decrease PTH secretion (By similarity). Regulator of vitamin-D metabolism. Negatively regulates osteoblast differentiation and matrix mineralization. |
| 組織特異性 | Expressed in osteogenic cells particularly during phases of active bone remodeling. In adult trabecular bone, expressed in osteocytes and flattened bone-lining cells (inactive osteoblasts). |
| 関連疾患 | Defects in FGF23 are the cause of autosomal dominant hypophosphataemic rickets (ADHR) [MIM:193100]. ADHR is characterized by low serum phosphorus concentrations, rickets, osteomalacia, leg deformities, short stature, bone pain and dental abscesses. Defects in FGF23 are a cause of hyperphosphatemic familial tumoral calcinosis (HFTC) [MIM:211900]. HFTC is a severe autosomal recessive metabolic disorder that manifests with hyperphosphatemia and massive calcium deposits in the skin and subcutaneous tissues. |
| 配列類似性 | Belongs to the heparin-binding growth factors family. |
| 翻訳後修飾 | Following secretion this protein is inactivated by cleavage into a N-terminal fragment and a C-terminal fragment. The processing is effected by proprotein convertases. O-glycosylated by GALT3. Glycosylation is necessary for secretion; it blocks processing by proprotein convertases when the O-glycan is alpha 2,6-sialylated. Competition between proprotein convertase cleavage and block of cleavage by O-glycosylation determines the level of secreted active FGF23. |
| 細胞内局在 | Secreted. Secretion is dependent on O-glycosylation. |

画像



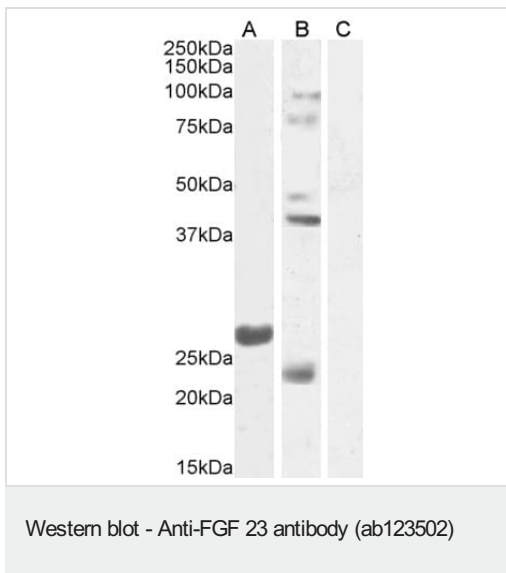
Anti-FGF 23 antibody (ab123502) at 0.5 µg/ml + Mouse brain lysate in RIPA buffer at 35 µg

Predicted band size: 28 kDa

Observed band size: 27 kDa

Additional bands at: 38 kDa. We are unsure as to the identity of these extra bands.

Primary incubation was 1 hour. Detected by chemiluminescence.



All lanes :

Lane 1 : Mouse Testes Lysate 1 in RIPA buffer

Lane 2 : Mouse Testes Lysate 2 in RIPA buffer

Lane 3 : Mouse Testes Lysate in RIPA buffer with blocking peptide

Lysates/proteins at 35 µg per lane.

Developed using the ECL technique.

Predicted band size: 28 kDa

Please note: All products are "FOR RESEARCH USE ONLY. NOT FOR USE IN DIAGNOSTIC PROCEDURES"

Our Abpromise to you: Quality guaranteed and expert technical support

- Replacement or refund for products not performing as stated on the datasheet
- Valid for 12 months from date of delivery
- Response to your inquiry within 24 hours
- We provide support in Chinese, English, French, German, Japanese and Spanish
- Extensive multi-media technical resources to help you
- We investigate all quality concerns to ensure our products perform to the highest standards

If the product does not perform as described on this datasheet, we will offer a refund or replacement. For full details of the Abpromise,

please visit <https://www.abcam.co.jp/abpromise> or contact our technical team.

Terms and conditions

- Guarantee only valid for products bought direct from Abcam or one of our authorized distributors