

Anti-FES antibody [EPR3230(2)] ab108418

リコンビナント **RabMAb**

画像数 4

製品の概要

製品名	Anti-FES antibody [EPR3230(2)]
製品の詳細	Rabbit monoclonal [EPR3230(2)] to FES
由来種	Rabbit
アプリケーション	適用あり: WB, ICC/IF, Flow Cyt (Intra) 適用なし: IHC-P
種交差性	交差種: Human
免疫原	Synthetic peptide. This information is proprietary to Abcam and/or its suppliers.
ポジティブ・コントロール	TF-1, U937, and Human spleen lysates; HeLa cells
特記事項	<p>This product is a recombinant monoclonal antibody, which offers several advantages including:</p> <ul style="list-style-type: none"> - High batch-to-batch consistency and reproducibility - Improved sensitivity and specificity - Long-term security of supply - Animal-free production <p>For more information see here.</p> <p>Our RabMAb[®] technology is a patented hybridoma-based technology for making rabbit monoclonal antibodies. For details on our patents, please refer to RabMAb[®] patents.</p> <p>Mouse, Rat: We have preliminary internal testing data to indicate this antibody may not react with these species. Please contact us for more information.</p>

製品の特性

製品の状態	Liquid
保存方法	Shipped at 4°C. Store at -20°C. Stable for 12 months at -20°C.
バッファー	<p>pH: 7.20</p> <p>Preservative: 0.01% Sodium azide</p> <p>Constituents: 9% PBS, 40% Glycerol (glycerin, glycerine), 0.05% BSA, 50% Tissue culture supernatant</p>
精製度	Tissue culture supernatant
ポリ/モノ	モノクローナル

クローン名EPR3230(2)

アイソタイプIgG

アプリケーション

The Abpromise guarantee **Abpromise保証は、**次のテスト済みアプリケーションにおけるab108418の使用に適用されます

アプリケーションノートには、推奨の開始希釈率がありますが、適切な希釈率につきましてはご検討ください。

アプリケーション	Abreviews	特記事項
WB		1/1000 - 1/10000. Detects a band of approximately 93 kDa (predicted molecular weight: 93 kDa).
ICC/IF		1/100 - 1/250.
Flow Cyt (Intra)		1/100.

追加情報 Is unsuitable for IHC-P.

ターゲット情報

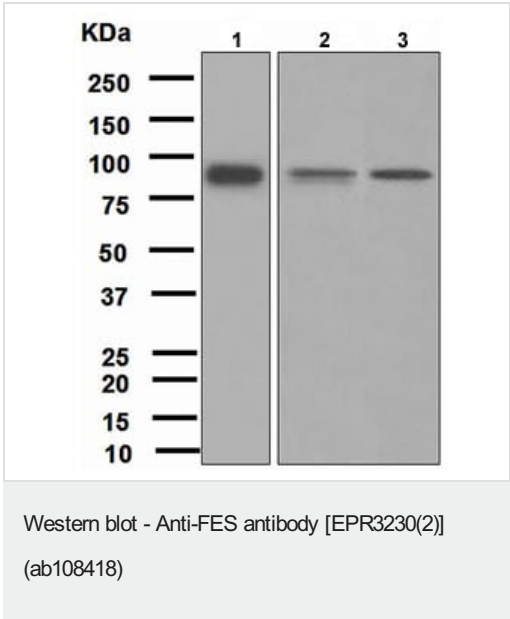
配列類似性 Belongs to the protein kinase superfamily. Tyr protein kinase family. Fes/fps subfamily.

Contains 1 FCH domain.

Contains 1 protein kinase domain.

Contains 1 SH2 domain.

画像



All lanes : Anti-FES antibody [EPR3230(2)] (ab108418) at 1/1000 dilution

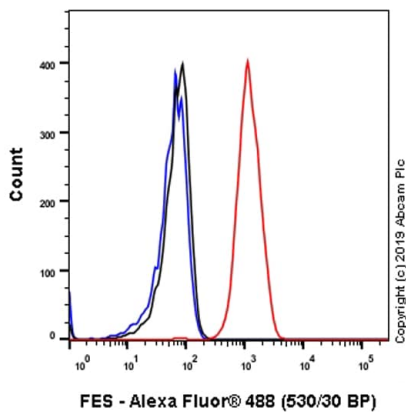
Lane 1 : TF-1 lysate

Lane 2 : U937 lysate

Lane 3 : Human spleen lysate

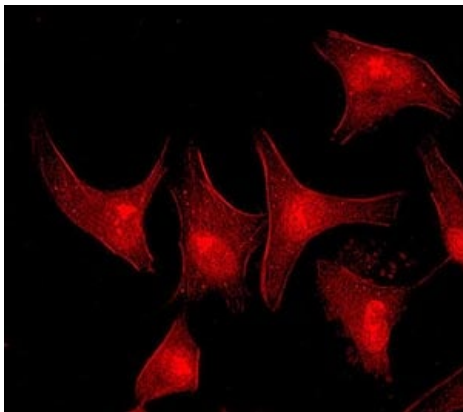
Lysates/proteins at 10 µg per lane.

Predicted band size: 93 kDa



Flow Cytometry (Intracellular) - Anti-FES antibody
[EPR3230(2)] (ab108418)

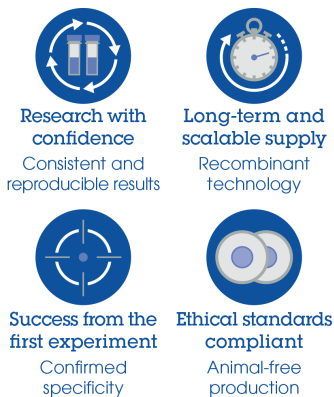
Flow Cytometry analysis of HeLa (Human cervix adenocarcinoma epithelial cell) cells labeling FES with purified ab108418 at 1/100 dilution (10 µg/mL) (Red). Cells were fixed with 4% Paraformaldehyde and permeabilised with 90% Methanol. A Goat anti rabbit IgG (Alexa Fluor® 488, [ab150077](#)) secondary antibody was used at 1/2000. Isotype control - Rabbit monoclonal IgG (Black). Unlabeled control - Cells without incubation with primary antibody and secondary antibody (Blue).



Immunocytochemistry/ Immunofluorescence - Anti-FES antibody [EPR3230(2)] (ab108418)

ab108418, at a 1/100 dilution, staining FES in HeLa (Human epithelial cell line from cervix adenocarcinoma) cells by Immunofluorescence.

Why choose a recombinant antibody?



Anti-FES antibody [EPR3230(2)] (ab108418)

Please note: All products are "FOR RESEARCH USE ONLY. NOT FOR USE IN DIAGNOSTIC PROCEDURES"

Our Abpromise to you: Quality guaranteed and expert technical support

- Replacement or refund for products not performing as stated on the datasheet
- Valid for 12 months from date of delivery
- Response to your inquiry within 24 hours

- We provide support in Chinese, English, French, German, Japanese and Spanish
- Extensive multi-media technical resources to help you
- We investigate all quality concerns to ensure our products perform to the highest standards

If the product does not perform as described on this datasheet, we will offer a refund or replacement. For full details of the Abpromise, please visit <https://www.abcam.co.jp/abpromise> or contact our technical team.

Terms and conditions

- Guarantee only valid for products bought direct from Abcam or one of our authorized distributors