


Anti-Ferritin Heavy Chain antibody ab65080

★★★★★ [4 Abreviews](#) [63 References](#) [画像数 4](#)

製品の概要

製品名	Anti-Ferritin Heavy Chain antibody
製品の詳細	Rabbit polyclonal to Ferritin Heavy Chain
由来種	Rabbit
特異性	<p>Replenishment batches of ab65080 are tested in WB. Previous batches were additionally validated in ICC/IF and IHC-P. These applications are still expected to work and are covered by our Abpromise guarantee.</p> <p>From Mar 2024, QC testing of replenishment batches of this polyclonal changed. All tested and expected application and reactive species combinations are still covered by our Abcam product promise. However, we no longer test all applications. For more information on a specific batch, please contact our Scientific Support who will be happy to help. You may also be interested in our alternative recombinant antibody, ab75973.</p>
アプリケーション	適用あり: WB, IHC-P, ICC/IF
種交差性	<p>交差種: Human</p> <p>交差が予測される動物種: Mouse, Sheep, Goat, Cow, Cat, Dog, Orangutan </p>
免疫原	<p>Synthetic peptide corresponding to Human Ferritin Heavy Chain aa 1-100 (N terminal) conjugated to keyhole limpet haemocyanin.</p> <p>Database link: P02794 (Peptide available as ab90631)</p>
ポジティブ・コントロール	<p>Recombinant Human Ferritin Heavy Chain protein (ab78877) can be used as a positive control in WB. This antibody gave a positive signal in Human Liver Tissue Lysate. ICC/IF: PC3 cell line. IHC-P: FFPE human normal liver tissue sections.</p>
特記事項	<p>The Life Science industry has been in the grips of a reproducibility crisis for a number of years. Abcam is leading the way in addressing this with our range of recombinant monoclonal antibodies and knockout edited cell lines for gold-standard validation. Please check that this product meets your needs before purchasing.</p> <p>If you have any questions, special requirements or concerns, please send us an inquiry and/or contact our Support team ahead of purchase. Recommended alternatives for this product can be found below, along with publications, customer reviews and Q&As</p>

製品の特性

製品の状態	Liquid
保存方法	Shipped at 4°C. Store at +4°C short term (1-2 weeks). Upon delivery aliquot. Store at -20°C or -80°C. Avoid freeze / thaw cycle.
バッファー	pH: 7.40 Preservative: 0.02% Sodium azide Constituent: PBS
精製度	Batches of this product that have a concentration < 1mg/ml may have BSA added as a stabilising agent. If you would like information about the formulation of a specific lot, please contact our scientific support team who will be happy to help.
ポリ/モノ	Immunogen affinity purified
アイソタイプ	ポリクローナル IgG

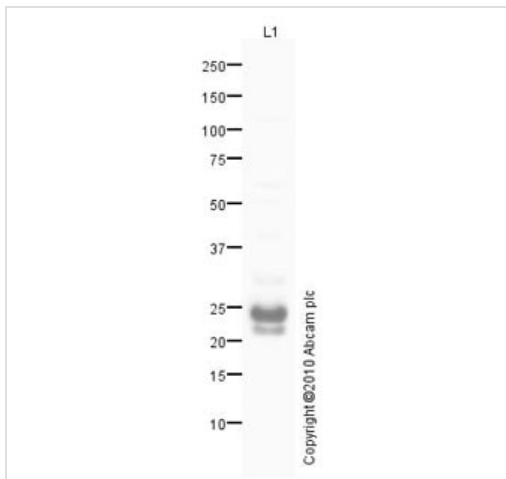
アプリケーション

The Abpromise guarantee **Abpromise保証は、次のテスト済みアプリケーションにおけるab65080の使用に適用されます**
 アプリケーションノートには、推奨の開始希釈率がありますが、適切な希釈率につきましてはご検討ください。

アプリケーション	Abreviews	特記事項
WB		Use a concentration of 1 µg/ml. Detects a band of approximately 21 kDa (predicted molecular weight: 21 kDa).
IHC-P	★★★★★ (1)	Use a concentration of 5 µg/ml.
ICC/IF		Use a concentration of 1 µg/ml.

ターゲット情報

画像



Western blot - Anti-Ferritin Heavy Chain antibody (ab65080)

Anti-Ferritin Heavy Chain antibody (ab65080) at 1 µg/ml + Human liver tissue lysate - total protein (**ab29889**) at 10 µg

Secondary

Goat polyclonal to Rabbit IgG - H&L - Pre-Adsorbed (HRP) at 1/3000 dilution

Developed using the ECL technique.

Performed under reducing conditions.

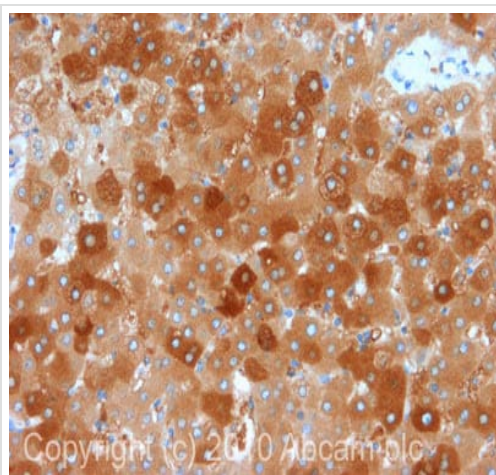
Predicted band size: 21 kDa

Observed band size: 21 kDa

Additional bands at: 24 kDa (possible post-translational modification)

Exposure time: 3 minutes

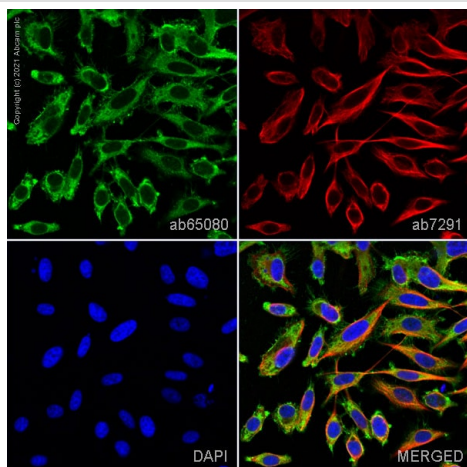
Ferritin Heavy Chain contains a number of potential phosphorylation sites (SwissProt data) which may explain it running at a slightly higher than predicted molecular weight (24 kDa).



Immunohistochemistry (Formalin/PFA-fixed paraffin-embedded sections) - Anti-Ferritin Heavy Chain antibody (ab65080)

IHC image of ab65080 staining in Human Normal Liver formalin fixed paraffin embedded tissue section, performed on a Leica Bond™ system. The section was pre-treated using heat mediated antigen retrieval with sodium citrate buffer (pH6, epitope retrieval solution 1) for 20 mins. The section was then incubated with ab65080, 5µg/ml, for 15 mins at room temperature and detected using an HRP conjugated compact polymer system. DAB was used as the chromogen. The section was then counterstained with haematoxylin and mounted with DPX.

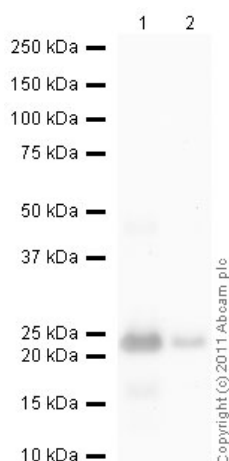
For other IHC staining systems (automated and non-automated) customers should optimize variable parameters such as antigen retrieval conditions, primary antibody concentration and antibody incubation times.



Immunocytochemistry/ Immunofluorescence - Anti-Ferritin Heavy Chain antibody (ab65080)

ab65080 staining Ferritin Heavy Chain in PC3 cells. The cells were fixed with 100% methanol (5 min), permeabilized with 0.1% PBS-Triton X-100 for 5 minutes and then blocked with 1% BSA/10% normal goat serum/0.3M glycine in 0.1% PBS-Tween for 1h. The cells were then incubated overnight at 4°C with ab65080 at 1µg/ml and **ab7291**, Mouse monoclonal [DM1A] to alpha Tubulin - Loading Control. Cells were then incubated with **ab150081**, Goat polyclonal Secondary Antibody to Rabbit IgG - H&L (Alexa Fluor® 488), pre-adsorbed at 1/1000 dilution (shown in green) and **ab150080**, Goat polyclonal Secondary Antibody to Rabbit IgG - H&L (Alexa Fluor® 594) at 1/1000 dilution (shown in pseudocolour red). Nuclear DNA was labelled with DAPI (shown in blue).

Image was acquired with a confocal microscope (Leica-Microsystems TCS SP8) and a single confocal section is shown.



Western blot - Anti-Ferritin Heavy Chain antibody (ab65080)

All lanes : Anti-Ferritin Heavy Chain antibody (ab65080) at 1 µg/ml

Lane 1 : Recombinant Human Ferritin Heavy Chain protein (**ab78877**) at 0.1 µg

Lane 2 : Recombinant Human Ferritin Heavy Chain protein (**ab78877**) at 0.01 µg

Secondary

All lanes : Goat Anti-Rabbit IgG H&L (HRP) preadsorbed (**ab97080**) at 1/5000 dilution

Developed using the ECL technique.

Performed under reducing conditions.

Predicted band size: 21 kDa

Exposure time: 30 seconds

Please note: All products are "FOR RESEARCH USE ONLY. NOT FOR USE IN DIAGNOSTIC PROCEDURES"

Our Abpromise to you: Quality guaranteed and expert technical support

- Replacement or refund for products not performing as stated on the datasheet
- Valid for 12 months from date of delivery
- Response to your inquiry within 24 hours
- We provide support in Chinese, English, French, German, Japanese and Spanish
- Extensive multi-media technical resources to help you
- We investigate all quality concerns to ensure our products perform to the highest standards

If the product does not perform as described on this datasheet, we will offer a refund or replacement. For full details of the Abpromise, please visit <https://www.abcam.co.jp/abpromise> or contact our technical team.

Terms and conditions

- Guarantee only valid for products bought direct from Abcam or one of our authorized distributors