

### Anti-FCHSD2 antibody ab122485

画像数 3

#### 製品の概要

製品名	Anti-FCHSD2 antibody
製品の詳細	Rabbit polyclonal to FCHSD2
由来種	Rabbit
アプリケーション	<b>適用あり:</b> ICC/IF, WB, IHC-P
種交差性	<b>交差種:</b> Human
免疫原	antigen sequence: LENS SKVVRD YNLQLFLQEN AVFHKPQPFQ FQPCSDTSTR QLESETGTTE EHSLNKEARK WATRVAREHK NIVHQQRVLN DLECHGAAVS EQSRA, corresponding to amino acids of Human FCHSD2.

[Run BLAST with Expasy](#) [Run BLAST with NCBI](#)

**ポジティブ・コントロール** Human pancreas tissue; RT 4, U 251 MG, Human liver and tonsil lysates.

**特記事項** The Life Science industry has been in the grips of a reproducibility crisis for a number of years. Abcam is leading the way in addressing this with our range of recombinant monoclonal antibodies and knockout edited cell lines for gold-standard validation. Please check that this product meets your needs before purchasing.

If you have any questions, special requirements or concerns, please send us an inquiry and/or contact our Support team ahead of purchase. Recommended alternatives for this product can be found below, along with publications, customer reviews and Q&As

#### 製品の特性

製品の状態	Liquid
保存方法	Shipped at 4°C. Upon delivery aliquot and store at -20°C. Avoid freeze / thaw cycles.
バッファー	pH: 7.20 Preservative: 0.02% Sodium azide Constituents: 59% PBS, 40% Glycerol (glycerin, glycerine)
精製度	Immunogen affinity purified
ポリモノ	ポリクローナル
アイソタイプ	IgG

#### アプリケーション

## The Abpromise guarantee

**Abpromise保証は、次のテスト済みアプリケーションにおけるab122485の使用に適用されます**

アプリケーションノートには、推奨の開始希釈率がありますが、適切な希釈率につきましてはご確認ください。

アプリケーション	Abreviews	特記事項
ICC/IF		Use a concentration of 0.25 - 2 µg/ml.
WB		1/250 - 1/500.
IHC-P		1/50 - 1/200. Perform heat mediated antigen retrieval with citrate buffer pH 6 before commencing with IHC staining protocol.

## ターゲット情報

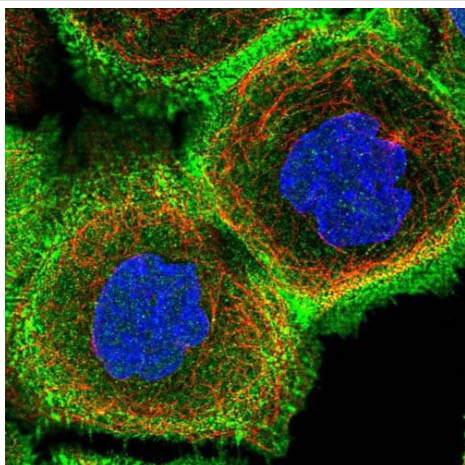
### 組織特異性

Liver, brain, heart, placenta, skeletal muscle, pancreas, lung and kidney.

### 配列類似性

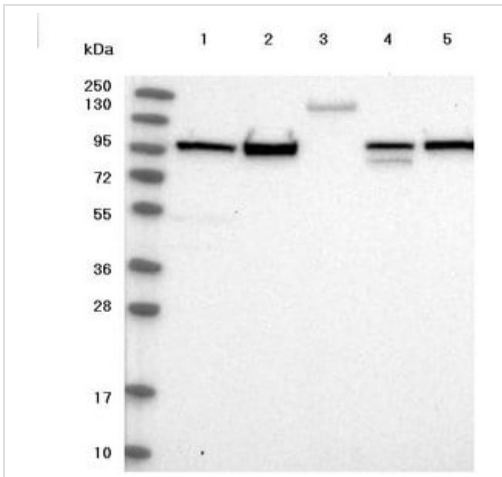
Contains 1 FCH domain.  
Contains 2 SH3 domains.

## 画像



Immunofluorescent staining of Human cell line A-431 shows positivity in nucleus, plasma membrane and cytoskeleton (actin filaments). Recommended concentration of ab122485 1-4 µg/ml. Cells treated with PFA/Triton X-100.

Immunocytochemistry/ Immunofluorescence - Anti-FCHSD2 antibody (ab122485)



Western blot - Anti-FCHSD2 antibody (ab122485)

**All lanes :** Anti-FCHSD2 antibody (ab122485) at 1/250 dilution

**Lane 1 :** RT 4 cell line lysate

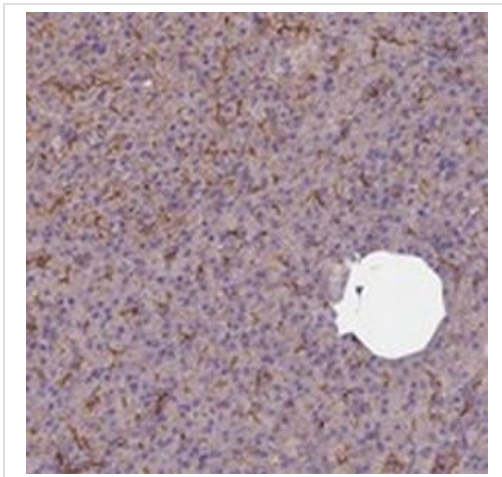
**Lane 2 :** U 251 MG cell line lysate

**Lane 3 :** Human plasma lysate

**Lane 4 :** Human liver tissue lysate

**Lane 5 :** Human tonsil tissue lysate

Developed using the ECL technique.



Immunohistochemistry (Formalin/PFA-fixed paraffin-embedded sections) - Anti-FCHSD2 antibody (ab122485)

ab122485, at 1/50, staining FCHSD2 in paraffin embedded Human pancreas tissue by Immunohistochemistry.

**Please note:** All products are "FOR RESEARCH USE ONLY. NOT FOR USE IN DIAGNOSTIC PROCEDURES"

**Our Abpromise to you: Quality guaranteed and expert technical support**

- Replacement or refund for products not performing as stated on the datasheet
- Valid for 12 months from date of delivery
- Response to your inquiry within 24 hours
  
- We provide support in Chinese, English, French, German, Japanese and Spanish
- Extensive multi-media technical resources to help you
- We investigate all quality concerns to ensure our products perform to the highest standards

If the product does not perform as described on this datasheet, we will offer a refund or replacement. For full details of the Abpromise, please visit <https://www.abcam.co.jp/abpromise> or contact our technical team.

### **Terms and conditions**

---

- Guarantee only valid for products bought direct from Abcam or one of our authorized distributors