


### Anti-FBXO38 antibody ab87729

画像数 3

#### 製品の概要

製品名	Anti-FBXO38 antibody
製品の詳細	Rabbit polyclonal to FBXO38
由来種	Rabbit
アプリケーション	<b>適用あり:</b> WB, IP, IHC-P
種交差性	<b>交差種:</b> Mouse, Human <b>交差が予測される動物種:</b> Rat, Horse, Cow, Dog, Chimpanzee, Rhesus monkey, Gorilla, Opossum, Orangutan, Elephant 
免疫原	Synthetic peptide corresponding to Human FBXO38 aa 850-950. Database link: <a href="#">Q6PIJ6</a>
ポジティブ・コントロール	HeLa and NIH3T3 whole cell lysates.
特記事項	<p>The Life Science industry has been in the grips of a reproducibility crisis for a number of years. Abcam is leading the way in addressing this with our range of recombinant monoclonal antibodies and knockout edited cell lines for gold-standard validation. Please check that this product meets your needs before purchasing.</p> <p>If you have any questions, special requirements or concerns, please send us an inquiry and/or contact our Support team ahead of purchase. Recommended alternatives for this product can be found below, along with publications, customer reviews and Q&amp;As</p>

#### 製品の特性

製品の状態	Liquid
保存方法	Shipped at 4°C. Upon delivery aliquot and store at -20°C. Avoid freeze / thaw cycles.
バッファー	pH: 7 Preservative: 0.09% Sodium azide Constituent: Tris citrate/phosphate
精製度	Immunogen affinity purified
ポリ/モノ	ポリクローナル
アイソタイプ	IgG

#### アプリケーション

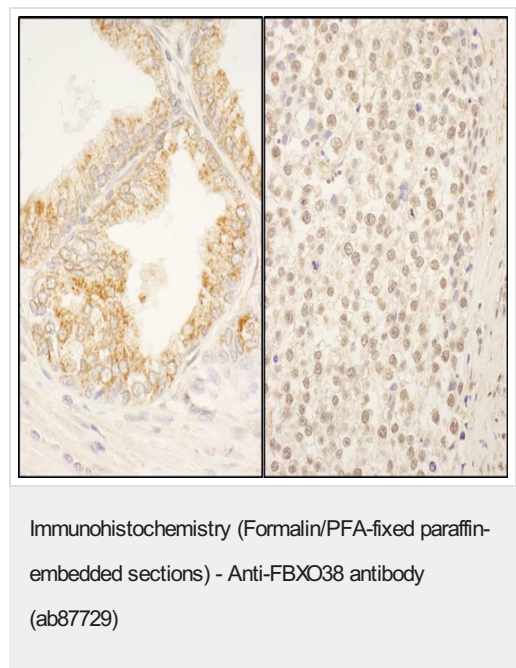
**The Abpromise guarantee**      **Abpromise保証は、次のテスト済みアプリケーションにおけるab87729の使用に適用されます**  
 アプリケーションノートには、推奨の開始希釈率がありますが、適切な希釈率につきましてはご検討ください。

アプリケーション	Abreviews	特記事項
WB		1/2000 - 1/10000. Predicted molecular weight: 134 kDa.
IP		Use at 5-10 µg/mg of lysate.
IHC-P		1/500 - 1/2000. Perform heat mediated antigen retrieval with citrate buffer pH 6 before commencing with IHC staining protocol.

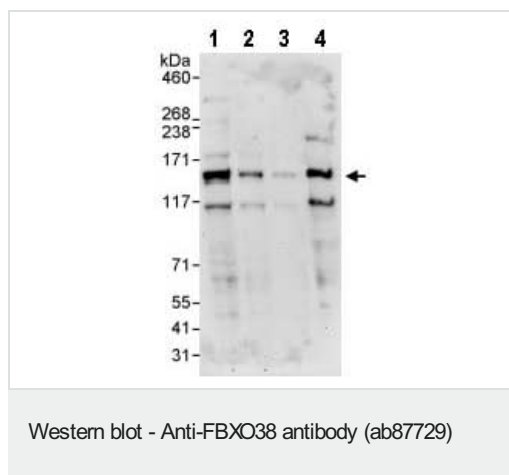
## ターゲット情報

関連性	F box protein 38 probably recognizes and binds to some phosphorylated proteins and promotes their ubiquitination and degradation. It may coactivate KLF7, but does not seem to promote KLF7 ubiquitination. There are three named isoforms.
細胞内局在	Cytoplasmic and Nuclear

## 画像



Immunohistochemistry (Formalin/PFA-fixed paraffin-embedded sections) analysis of human prostate carcinoma (right) and human testicular seminoma (right) tissues labelling FBXO38 with ab87729 at 1/1000 (1µg/ml). Detection: DAB.



**All lanes :** Anti-FBXO38 antibody (ab87729) at 0.1 µg/ml

**Lane 1 :** Whole cell

lysate from HeLa cells at 50 µg

**Lane 2 :** Whole cell

lysate from HeLa cells at 15 µg

**Lane 3 :** Whole cell

lysate from HeLa cells at 5 µg

**Lane 4 :** Whole cell

lysate from NIH3T3 cells at 50 µg

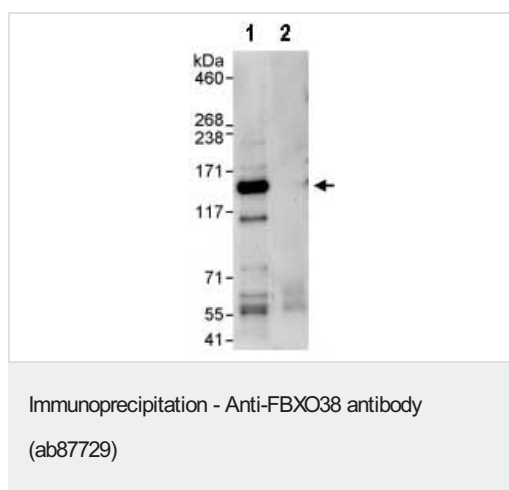
Developed using the ECL technique.

**Predicted band size:** 134 kDa

**Observed band size:** 134 kDa

**Additional bands at:** 107 kDa (possible isoform)

**Exposure time:** 3 minutes



Detection of FBXO38 in Immunoprecipitates of Whole cell lysate from HeLa cells (1 mg for IP, 20% of IP loaded) using ab87729 at 10 µg/mg lysate for IP (Lane 1) and at 1 µg/ml for subsequent Western blot detection. Lane 2 represents control IgG IP. Detection: Chemiluminescence with an exposure time of 30 seconds.

**Please note:** All products are "FOR RESEARCH USE ONLY. NOT FOR USE IN DIAGNOSTIC PROCEDURES"

**Our Abpromise to you: Quality guaranteed and expert technical support**

- Replacement or refund for products not performing as stated on the datasheet
- Valid for 12 months from date of delivery
- Response to your inquiry within 24 hours
- We provide support in Chinese, English, French, German, Japanese and Spanish
- Extensive multi-media technical resources to help you
- We investigate all quality concerns to ensure our products perform to the highest standards

If the product does not perform as described on this datasheet, we will offer a refund or replacement. For full details of the Abpromise, please visit <https://www.abcam.co.jp/abpromise> or contact our technical team.

#### **Terms and conditions**

---

- Guarantee only valid for products bought direct from Abcam or one of our authorized distributors