


# Anti-FAM175B antibody ab74333

**2 References** [画像数 2](#)

### 製品の概要

製品名	Anti-FAM175B antibody
製品の詳細	Rabbit polyclonal to FAM175B
由来種	Rabbit
特異性	The antibody recognises a region between residue 350 and 390 of human FAM175B using the numbering given in entry NP_115558.3 (GeneID 23172).
アプリケーション	<b>適用あり:</b> WB, IP
種交差性	<b>交差種:</b> Human <b>交差が予測される動物種:</b> Dog, Chimpanzee, Rhesus monkey, Gorilla, Orangutan 
免疫原	Synthetic peptide corresponding to Human FAM175B. Synthetic peptide corresponding to a region between residue 350 and 390 of human FAM175B (NP_115558.3) Database link: <a href="#">Q15018</a>
ポジティブ・コントロール	WB: Whole HeLa and 293T cell lysate. IP: Whole HeLa cell lysate.
特記事項	<p>The Life Science industry has been in the grips of a reproducibility crisis for a number of years. Abcam is leading the way in addressing this with our range of recombinant monoclonal antibodies and knockout edited cell lines for gold-standard validation. Please check that this product meets your needs before purchasing.</p> <p>If you have any questions, special requirements or concerns, please send us an inquiry and/or contact our Support team ahead of purchase. Recommended alternatives for this product can be found below, along with publications, customer reviews and Q&amp;As</p>

### 製品の特性

製品の状態	Liquid
保存方法	Shipped at 4°C. Upon delivery aliquot and store at -20°C. Avoid freeze / thaw cycles.
バッファー	pH: 6.8 Preservative: 0.09% Sodium azide Constituents: 0.1% BSA, Tris buffered saline
精製度	Immunogen affinity purified
特記事項 (精製)	Antibody was affinity purified using an epitope specific to FAM175B immobilized on solid support.

ポリ/モノ	ポリクローナル
アイソタイプ	IgG

アプリケーション

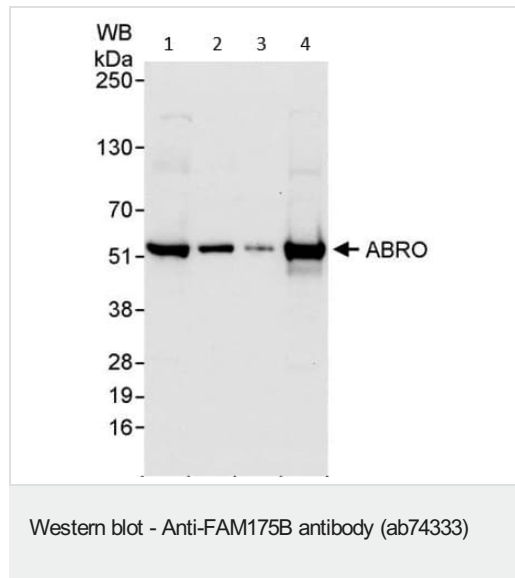
**The Abpromise guarantee**      **Abpromise保証は、** 次のテスト済みアプリケーションにおけるab74333の使用に適用されます  
 アプリケーションノートには、推奨の開始希釈率がありますが、適切な希釈率につきましてはご検討ください。

アプリケーション	Abreviews	特記事項
WB		Use a concentration of 0.04 µg/ml. Predicted molecular weight: 47 kDa.
IP		Use at 2-5 µg/mg of lysate.

ターゲット情報

**関連性**      FAM175B (ABRO1) is a 415 amino acid protein, sharing 39% identity to ABRA1 in the N terminal two thirds of the protein (amino acids 1 to 260), including a coiled-coil domain and a region called the ABR domain. However, ABRO1 lacks the phosphorylated ser-X-X-phe motif of ABRA1 and, unlike ABRA1, does not bind to BRCA1.

画像



**All lanes :** Anti-FAM175B antibody (ab74333) at 0.04 µg/ml

**Lane 1 :** HeLa whole cell lysate at 50 µg

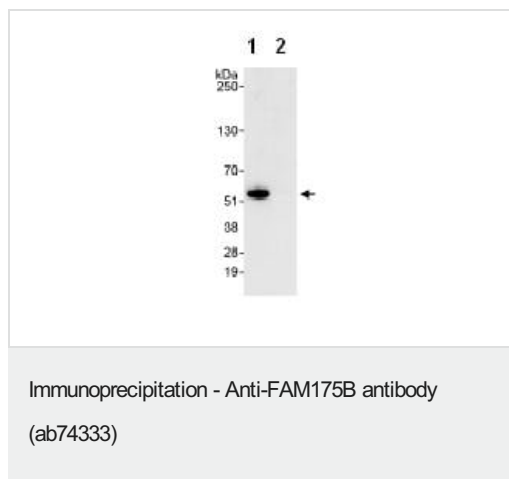
**Lane 2 :** HeLa whole cell lysate at 15 µg

**Lane 3 :** HeLa whole cell lysate at 5 µg

**Lane 4 :** HEK293T whole cell lysate at 50 µg

**Predicted band size:** 47 kDa

*Detection:* Chemiluminescence with exposure times of 10 seconds



ab74333 at 1 ug/ml (used for IP at 3 ug/lysate).

Lane 1: Whole HeLa cell lysate at 1 mg for IP (20% of IP loaded).

Lane 2: control IgG.

Detection: Chemiluminescence with an exposure time of 3 seconds.

**Please note:** All products are "FOR RESEARCH USE ONLY. NOT FOR USE IN DIAGNOSTIC PROCEDURES"

### Our Abpromise to you: Quality guaranteed and expert technical support

- Replacement or refund for products not performing as stated on the datasheet
- Valid for 12 months from date of delivery
- Response to your inquiry within 24 hours
- We provide support in Chinese, English, French, German, Japanese and Spanish
- Extensive multi-media technical resources to help you
- We investigate all quality concerns to ensure our products perform to the highest standards

If the product does not perform as described on this datasheet, we will offer a refund or replacement. For full details of the Abpromise, please visit <https://www.abcam.co.jp/abpromise> or contact our technical team.

### Terms and conditions

- Guarantee only valid for products bought direct from Abcam or one of our authorized distributors