

Anti-FABP4 antibody ab66682

★★★★★ [1 Abreviews](#) [18 References](#) [画像数 2](#)

製品の概要

製品名	Anti-FABP4 antibody
製品の詳細	Rabbit polyclonal to FABP4
由来種	Rabbit
アプリケーション	適用あり: WB
種交差性	交差種: Mouse, Rat, Human
免疫原	Synthetic peptide corresponding to Human FABP4 aa 100 to the C-terminus (C terminal) conjugated to keyhole limpet haemocyanin. (Peptide available as ab66681)

特記事項

The Life Science industry has been in the grips of a reproducibility crisis for a number of years. Abcam is leading the way in addressing this with our range of recombinant monoclonal antibodies and knockout edited cell lines for gold-standard validation. Please check that this product meets your needs before purchasing.

If you have any questions, special requirements or concerns, please send us an inquiry and/or contact our Support team ahead of purchase. Recommended alternatives for this product can be found below, along with publications, customer reviews and Q&As

製品の特性

製品の状態	Liquid
保存方法	Shipped at 4°C. Store at +4°C short term (1-2 weeks). Upon delivery aliquot. Store at -20°C or -80°C. Avoid freeze / thaw cycle.
バッファー	pH: 7.40 Preservative: 0.02% Sodium azide Constituent: PBS Batches of this product that have a concentration < 1mg/ml may have BSA added as a stabilising agent. If you would like information about the formulation of a specific lot, please contact our scientific support team who will be happy to help.
精製度	Immunogen affinity purified
ポリ/モノ	ポリクローナル
アイソタイプ	IgG

アプリケーション

The Abpromise guarantee **Abpromise保証は、次のテスト済みアプリケーションにおけるab66682の使用に適用されます**

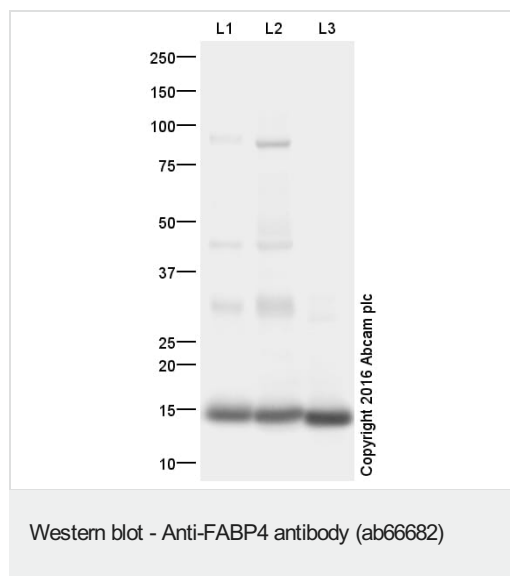
アプリケーションノートには、推奨の開始希釈率がありますが、適切な希釈率につきましてはご検討ください。

アプリケーション	Abreviews	特記事項
WB		Use a concentration of 1 µg/ml. Detects a band of approximately 15 kDa (predicted molecular weight: 15 kDa).

ターゲット情報

機能	Lipid transport protein in adipocytes. Binds both long chain fatty acids and retinoic acid. Delivers long-chain fatty acids and retinoic acid to their cognate receptors in the nucleus.
配列類似性	Belongs to the calycin superfamily. Fatty-acid binding protein (FABP) family.
ドメイン	Forms a beta-barrel structure that accommodates hydrophobic ligands in its interior.
細胞内局在	Cytoplasm. Nucleus. Depending on the nature of the ligand, a conformation change exposes a nuclear localization motif and the protein is transported into the nucleus. Subject to constitutive nuclear export.

画像



All lanes : Anti-FABP4 antibody (ab66682) at 1 µg/ml

Lane 1 : Human adipose normal tissue lysate - total protein
(**ab28980**)

Lane 2 : P7 Mouse Adipose Tissue Lysate

Lane 3 : Adult Rat Brown Adipose Tissue Lysate (**ab48639**)

Lysates/proteins at 10 µg per lane.

Secondary

All lanes : Goat polyclonal to Rabbit IgG - H&L - Pre-Adsorbed
(HRP) at 1/50000 dilution

Developed using the ECL technique.

Performed under reducing conditions.

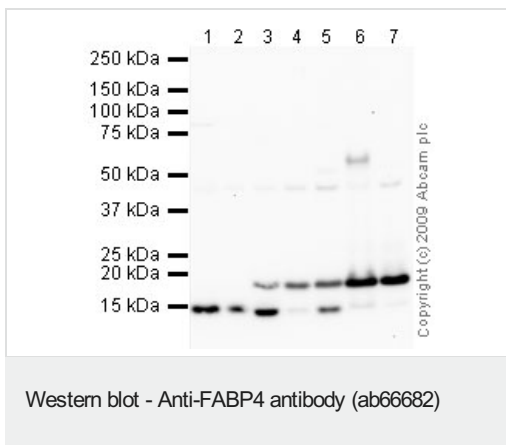
Predicted band size: 15 kDa

Observed band size: 15 kDa

Additional bands at: 30 kDa, 44 kDa, 85 kDa. We are unsure as to the identity of these extra bands.

Exposure time: 10 seconds

This blot was produced using a 4-12% Bis-tris gel under the MES buffer system. The gel was run at 200V for 35 minutes before being transferred onto a Nitrocellulose membrane at 30V for 70 minutes. The membrane was then blocked for an hour using 2% Bovine Serum Albumin before being incubated with ab66682 overnight at 4°C. Antibody binding was detected using an anti-rabbit antibody conjugated to HRP, and visualised using ECL development solution **ab133406**.



All lanes : Anti-FABP4 antibody (ab66682) at 1 µg/ml

Lane 1 : Mouse skeletal muscle tissue lysate - total protein (**ab29711**)

Lane 2 : Mouse thymus tissue lysate - total protein (**ab29285**)

Lane 3 : Rat Ovary Tissue Lysate

Lane 4 : Rat Colon Tissue Lysate

Lane 5 : Rat Thymus Tissue Lysate

Lane 6 : HepG2 (Human hepatocellular liver carcinoma cell line) Whole Cell Lysate

Lane 7 : HeLa (Human epithelial carcinoma cell line) Whole Cell Lysate

Lysates/proteins at 10 µg per lane.

Secondary

All lanes : Goat polyclonal to Rabbit IgG - H&L - Pre-Adsorbed (HRP) at 1/3000 dilution

Performed under reducing conditions.

Predicted band size: 15 kDa

Observed band size: 15 kDa

Additional bands at: 18 kDa (possible post-translational modification)

Please note: All products are "FOR RESEARCH USE ONLY. NOT FOR USE IN DIAGNOSTIC PROCEDURES"

Our Abpromise to you: Quality guaranteed and expert technical support

- Replacement or refund for products not performing as stated on the datasheet
- Valid for 12 months from date of delivery
- Response to your inquiry within 24 hours

- We provide support in Chinese, English, French, German, Japanese and Spanish
- Extensive multi-media technical resources to help you
- We investigate all quality concerns to ensure our products perform to the highest standards

If the product does not perform as described on this datasheet, we will offer a refund or replacement. For full details of the Abpromise, please visit <https://www.abcam.co.jp/abpromise> or contact our technical team.

Terms and conditions

- Guarantee only valid for products bought direct from Abcam or one of our authorized distributors