


Anti-Ezrin antibody [EP924Y] ab75840

KO 評価済 RabMAb

5 References 画像数 3

製品の概要

製品名	Anti-Ezrin antibody [EP924Y]
製品の詳細	Rabbit monoclonal [EP924Y] to Ezrin
由来種	Rabbit
特異性	ab75840 detects both phosphorylated and non phosphorylated Ezrin.
アプリケーション	適用あり: WB 適用なし: IHC-P or IP
種交差性	交差種: Mouse, Human 交差が予測される動物種: Rat 
免疫原	Synthetic peptide. This information is proprietary to Abcam and/or its suppliers.
ポジティブ・コントロール	WB: Wild-type HeLa, Wild-type HAP1, HeLa, HCT116, 293, A431 and SH-SY5Y cell lysates.
特記事項	Our RabMAb [®] technology is a patented hybridoma-based technology for making rabbit monoclonal antibodies. For details on our patents, please refer to RabMAb[®] patents . The Life Science industry has been in the grips of a reproducibility crisis for a number of years. Abcam is leading the way in addressing this with our range of recombinant monoclonal antibodies and knockout edited cell lines for gold-standard validation. Please check that this product meets your needs before purchasing. If you have any questions, special requirements or concerns, please send us an inquiry and/or contact our Support team ahead of purchase. Recommended alternatives for this product can be found below, along with publications, customer reviews and Q&As

製品の特性

製品の状態	Liquid
保存方法	Shipped at 4°C. Upon delivery aliquot and store at -20°C. Avoid freeze / thaw cycles.
バッファー	pH: 7.20 Preservative: 0.05% Sodium azide Constituents: 0.1% BSA, 40% Glycerol (glycerin, glycerine), 9.85% Tris glycine, 50% Tissue culture supernatant
精製度	Tissue culture supernatant

ポリモノ	モノクローナル
クローン名	EP924Y
アイソタイプ	IgG

アプリケーション

The Abpromise guarantee Abpromise保証は、次のテスト済みアプリケーションにおけるab75840の使用に適用されます
アプリケーションノートには、推奨の開始希釈率がありますが、適切な希釈率につきましてはご検討ください。

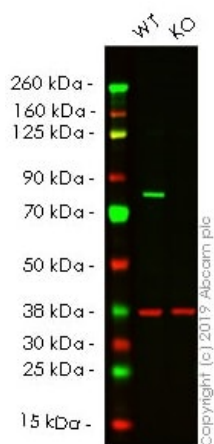
アプリケーション	Abreviews	特記事項
WB		1/1000 - 1/5000. Predicted molecular weight: 69 kDa.

追加情報 Is unsuitable for IHC-P or IP.

ターゲット情報

機能	Probably involved in connections of major cytoskeletal structures to the plasma membrane. In epithelial cells, required for the formation of microvilli and membrane ruffles on the apical pole. Along with PLEKHG6, required for normal macropinocytosis.
組織特異性	Expressed in cerebral cortex, basal ganglia, hippocampus, hypophysis, and optic nerve. Weakly expressed in brain stem and diencephalon. Stronger expression was detected in gray matter of frontal lobe compared to white matter (at protein level). Component of the microvilli of intestinal epithelial cells. Preferentially expressed in astrocytes of hippocampus, frontal cortex, thalamus, parahippocampal cortex, amygdala, insula, and corpus callosum. Not detected in neurons in most tissues studied.
配列類似性	Contains 1 FERM domain.
発生段階	Very strong staining is detected in the Purkinje cell layer and in part of the molecular layer of the infant brain compared to adult brain.
翻訳後修飾	Phosphorylated by tyrosine-protein kinases.
細胞内局在	Apical cell membrane. Cell projection. Cell projection > microvillus membrane. Cell projection > ruffle membrane. Cytoplasm > cell cortex. Cytoplasm > cytoskeleton. Localization to the apical membrane of parietal cells depends on the interaction with MPP5. Localizes to cell extensions and peripheral processes of astrocytes (By similarity). Microvillar peripheral membrane protein.

画像



Western blot - Anti-Ezrin antibody [EP924Y]
(ab75840)

All lanes : Anti-Ezrin antibody [EP924Y] (ab75840) at 1/1000 dilution

Lane 1 : Wild-type HeLa cell lysate

Lane 2 : EZR knockout HeLa cell lysate

Lysates/proteins at 20 µg per lane.

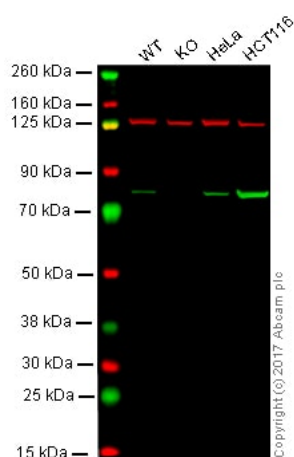
Performed under reducing conditions.

Predicted band size: 69 kDa

Observed band size: 75 kDa

Lanes 1- 2: Merged signal (red and green). Green - ab75840 observed at 75 kDa. Red - Anti-GAPDH antibody [6C5] - Loading Control ([ab8245](#)) observed at 37 kDa.

ab75840 was shown to react with Ezrin in wild-type HeLa cells in western blot. Loss of signal was observed when knockout cell line [ab264912](#) (knockout cell lysate [ab256908](#)) was used. Wild-type HeLa and EZR knockout HeLa cell lysates were subjected to SDS-PAGE. Membrane was blocked for 1 hour at room temperature in 0.1% TBST with 3% non-fat dried milk. ab75840 and Anti-GAPDH antibody [6C5] - Loading Control ([ab8245](#)) overnight at 4°C at a 1/1000 dilution and a 1/20000 dilution respectively. Blots were developed with Goat anti-Rabbit IgG H&L (IRDye®800CW) preadsorbed ([ab216773](#)) and Goat anti-Mouse IgG H&L (IRDye®680RD) preadsorbed ([ab216776](#)) secondary antibodies at 1/20000 dilution for 1 hour at room temperature before imaging.



Western blot - Anti-Ezrin antibody [EP924Y]
(ab75840)

All lanes : Anti-Ezrin antibody [EP924Y] (ab75840) at 1/1000 dilution

Lane 1 : Wild-type HAP1 whole cell lysate

Lane 2 : Ezrin knockout HAP1 whole cell lysate

Lane 3 : HeLa whole cell lysate

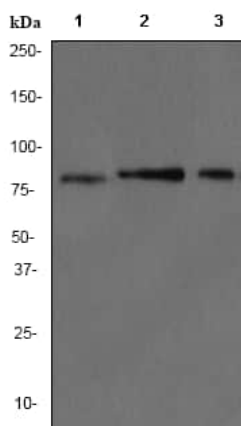
Lane 4 : HCT116 whole cell lysate

Lysates/proteins at 20 µg per lane.

Predicted band size: 69 kDa

Lanes 1 - 4: Merged signal (red and green). Green - ab75840 observed at 75 kDa. Red - loading control, [ab18058](#), observed at 130 kDa.

ab75840 was shown to specifically react with Ezrin in wild-type HAP1 cells as signal was lost in Ezrin knockout cells. Wild-type and Ezrin knockout samples were subjected to SDS-PAGE. Ab75840 and [ab18058](#) (Mouse anti-Vinculin loading control) were incubated overnight at 4°C at 1/1000 dilution and 1/20000 dilution respectively. Blots were developed with Goat anti-Rabbit IgG H&L (IRDye® 800CW) preabsorbed [ab216773](#) and Goat anti-Mouse IgG H&L (IRDye® 680RD) preabsorbed [ab216776](#) secondary antibodies at 1/10000 dilution for 1 hour at room temperature before imaging.



Western blot - Anti-Ezrin antibody [EP924Y]
(ab75840)

All lanes : Anti-Ezrin antibody [EP924Y] (ab75840) at 1/10000 dilution

Lane 1 : 293 cell lysate

Lane 2 : A431 cell lysate

Lane 3 : SH-SY5Y cell lysate

Lysates/proteins at 10 µg per lane.

Secondary

All lanes : goat anti-rabbit HRP at 1/2000 dilution

Predicted band size: 69 kDa

Observed band size: 81 kDa

Please note: All products are "FOR RESEARCH USE ONLY. NOT FOR USE IN DIAGNOSTIC PROCEDURES"

Our Abpromise to you: Quality guaranteed and expert technical support

- Replacement or refund for products not performing as stated on the datasheet
- Valid for 12 months from date of delivery
- Response to your inquiry within 24 hours
- We provide support in Chinese, English, French, German, Japanese and Spanish
- Extensive multi-media technical resources to help you
- We investigate all quality concerns to ensure our products perform to the highest standards

If the product does not perform as described on this datasheet, we will offer a refund or replacement. For full details of the Abpromise, please visit <https://www.abcam.co.jp/abpromise> or contact our technical team.

Terms and conditions

- Guarantee only valid for products bought direct from Abcam or one of our authorized distributors