


Anti-EXOC7 antibody ab95981

3 References [画像数 2](#)

医薬用外劇物

製品の概要

製品名	Anti-EXOC7 antibody
製品の詳細	Rabbit polyclonal to EXOC7
由来種	Rabbit
アプリケーション	適用あり: WB, ICC/IF
種交差性	交差種: Human 交差が予測される動物種: Mouse 
免疫原	Recombinant protein fragment containing a sequence corresponding to a region within amino acids 74 and 345 of EXOC7 (NP_001013861; UniProt ID: Q9UPT5 isoform 1).
ポジティブ・コントロール	WB: HeLa whole cell lysate; H1299, HepG2 and MOLT4 cell lysates ICC/IF: A431 cell
特記事項	<p>The Life Science industry has been in the grips of a reproducibility crisis for a number of years. Abcam is leading the way in addressing this with our range of recombinant monoclonal antibodies and knockout edited cell lines for gold-standard validation. Please check that this product meets your needs before purchasing.</p> <p>If you have any questions, special requirements or concerns, please send us an inquiry and/or contact our Support team ahead of purchase. Recommended alternatives for this product can be found below, along with publications, customer reviews and Q&As</p>

製品の特性

製品の状態	Liquid
保存方法	Shipped at 4°C. Upon delivery aliquot and store at -20°C. Avoid freeze / thaw cycles.
バッファー	pH: 7.00 Preservative: 0.01% Thimerosal (merthiolate) Constituents: 1.21% Tris, 0.75% Glycine, 10% Glycerol (glycerin, glycerine)
精製度	Immunogen affinity purified
ポリ/モノ	ポリクローナル
アイソタイプ	IgG

アプリケーション

The Abpromise guarantee

Abpromise保証は、次のテスト済みアプリケーションにおけるab95981の使用に適用されます

アプリケーションノートには、推奨の開始希釈率がありますが、適切な希釈率につきましてはご確認ください。

アプリケーション	Abreviews	特記事項
WB		1/500 - 1/3000. Predicted molecular weight: 78 kDa.
ICC/IF		1/100 - 1/200.

ターゲット情報

機能

Component of the exocyst complex involved in the docking of exocytic vesicles with fusion sites on the plasma membrane. In adipocytes, plays a crucial role in targeting SLC2A4 vesicle to the plasma membrane in response to insulin, perhaps directing the vesicle to the precise site of fusion.

配列類似性

Belongs to the EXO70 family.

ドメイン

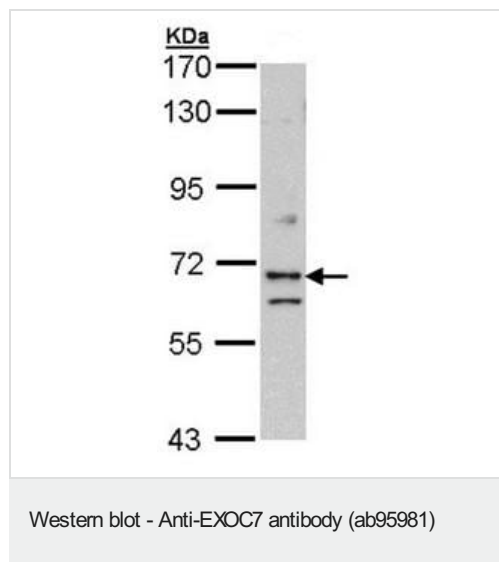
The N-terminus is involved in SEC8 and ARHQ binding.

The C-terminus is required for translocation to the plasma membrane.

細胞内局在

Cytoplasm > cytosol. Cell membrane. Translocates, as a preformed complex with SEC6 and SEC8, to the plasma membrane in response to insulin through the activation of ARHQ.

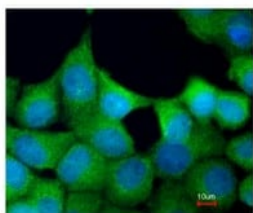
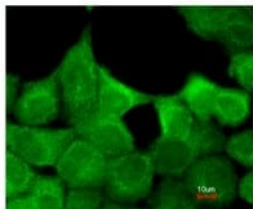
画像



Anti-EXOC7 antibody (ab95981) at 1/1000 dilution + HeLa whole cell lysate at 30 µg

Predicted band size: 78 kDa

7.5% SDS PAGE



Immunofluorescence analysis of paraformaldehyde-fixed A431, using ab95981 at 1/200 dilution. Lower image merged with DNA probe.

Immunocytochemistry/ Immunofluorescence - Anti-EXOC7 antibody (ab95981)

Please note: All products are "FOR RESEARCH USE ONLY. NOT FOR USE IN DIAGNOSTIC PROCEDURES"

Our Abpromise to you: Quality guaranteed and expert technical support

- Replacement or refund for products not performing as stated on the datasheet
- Valid for 12 months from date of delivery
- Response to your inquiry within 24 hours
- We provide support in Chinese, English, French, German, Japanese and Spanish
- Extensive multi-media technical resources to help you
- We investigate all quality concerns to ensure our products perform to the highest standards

If the product does not perform as described on this datasheet, we will offer a refund or replacement. For full details of the Abpromise, please visit <https://www.abcam.co.jp/abpromise> or contact our technical team.

Terms and conditions

- Guarantee only valid for products bought direct from Abcam or one of our authorized distributors