

Anti-EXOC1 antibody ab118798

★★★★★ [1 Abreviews](#) [3 References](#) [画像数 2](#)

製品の概要

| | |
|--------------|---|
| 製品名 | Anti-EXOC1 antibody |
| 製品の詳細 | Rabbit polyclonal to EXOC1 |
| 由来種 | Rabbit |
| アプリケーション | 適用あり: WB, IP |
| 種交差性 | 交差種: Mouse, Human |
| 免疫原 | Synthetic peptide corresponding to a region within amino acids 100-150 of Human EXOC1 (NP_060731.2). |
| ポジティブ・コントロール | HeLa, 293T, Jurkat and NIH3T3 whole cell lysates |
| 特記事項 | <p>The Life Science industry has been in the grips of a reproducibility crisis for a number of years. Abcam is leading the way in addressing this with our range of recombinant monoclonal antibodies and knockout edited cell lines for gold-standard validation. Please check that this product meets your needs before purchasing.</p> <p>If you have any questions, special requirements or concerns, please send us an inquiry and/or contact our Support team ahead of purchase. Recommended alternatives for this product can be found below, along with publications, customer reviews and Q&As</p> |

製品の特性

| | |
|--------|---|
| 製品の状態 | Liquid |
| 保存方法 | Shipped at 4°C. Upon delivery aliquot and store at -20°C. Avoid freeze / thaw cycles. |
| バッファー | <p>pH: 7</p> <p>Preservative: 0.09% Sodium azide</p> <p>Constituent: 99% Tris citrate/phosphate</p> |
| 精製度 | pH 7 to 8 |
| ポリ/モノ | Immunogen affinity purified |
| アイソタイプ | ポリクローナル |
| | IgG |

アプリケーション

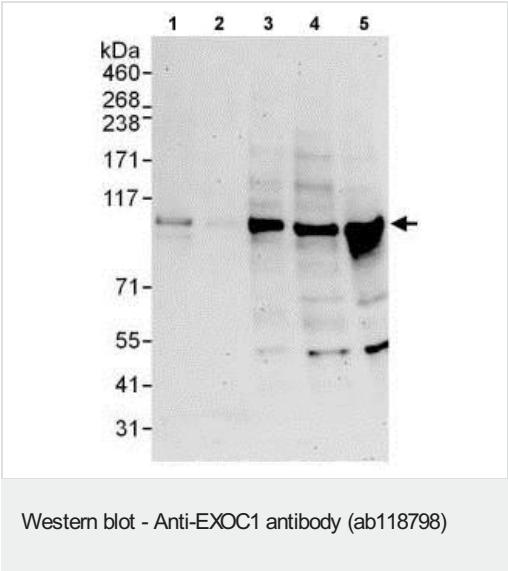
The Abpromise guarantee **Abpromise保証は、**次のテスト済みアプリケーションにおけるab118798の使用に適用されます
アプリケーションノートには、推奨の開始希釈率がありますが、適切な希釈率につきましてはご検討ください。

| アプリケーション | Abreviews | 特記事項 |
|----------|-----------|--|
| WB | ★★★★★ (1) | 1/2000 - 1/10000. Predicted molecular weight: 102 kDa. |
| IP | | Use at 2-10 µg/mg of lysate. |

ターゲット情報

| | |
|-------|---|
| 機能 | Component of the exocyst complex involved in the docking of exocytic vesicles with fusion sites on the plasma membrane. |
| 配列類似性 | Belongs to the SEC3 family. |

画像



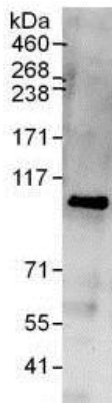
All lanes : Anti-EXOC1 antibody (ab118798) at 0.1 µg/ml

- Lane 1 :** HeLa whole cell lysate at 50 µg
- Lane 2 :** HeLa whole cell lysate at 15 µg
- Lane 3 :** 293T whole cell lysate at 50 µg
- Lane 4 :** Jurkat whole cell lysate at 50 µg
- Lane 5 :** NIH3T3 whole cell lysate at 50 µg

Developed using the ECL technique.

Predicted band size: 102 kDa

Exposure time: 3 minutes



Immunoprecipitation - Anti-EXOC1 antibody
(ab118798)

Detection of EXOC1 in Immunoprecipitates of HeLa whole cell lysates (1 mg for IP, 20% of IP loaded) using ab118798 at 6 µg/mg lysate for IP and at 1 µg/ml for subsequent Western blot detection. Detection: Chemiluminescence with an exposure time of 30 seconds.

Please note: All products are "FOR RESEARCH USE ONLY. NOT FOR USE IN DIAGNOSTIC PROCEDURES"

Our Abpromise to you: Quality guaranteed and expert technical support

- Replacement or refund for products not performing as stated on the datasheet
- Valid for 12 months from date of delivery
- Response to your inquiry within 24 hours
- We provide support in Chinese, English, French, German, Japanese and Spanish
- Extensive multi-media technical resources to help you
- We investigate all quality concerns to ensure our products perform to the highest standards

If the product does not perform as described on this datasheet, we will offer a refund or replacement. For full details of the Abpromise, please visit <https://www.abcam.co.jp/abpromise> or contact our technical team.

Terms and conditions

- Guarantee only valid for products bought direct from Abcam or one of our authorized distributors