


Anti-ETV6 / Tel antibody ab64909

1 [References](#) **2** [画像数](#)

製品の概要

製品名	Anti-ETV6 / Tel antibody
製品の詳細	Rabbit polyclonal to ETV6 / Tel
由来種	Rabbit
アプリケーション	適用あり: ICC/IF, WB
種交差性	交差種: Human 交差が予測される動物種: Mouse, Rat 
免疫原	Synthetic peptide derived from internal sequence of human ETV6/ Tel.
ポジティブ・コントロール	HeLa cells. Extracts from HeLa cells, HepG2 cells and Jurkat cells.
特記事項	<p>The Life Science industry has been in the grips of a reproducibility crisis for a number of years. Abcam is leading the way in addressing this with our range of recombinant monoclonal antibodies and knockout edited cell lines for gold-standard validation. Please check that this product meets your needs before purchasing.</p> <p>If you have any questions, special requirements or concerns, please send us an inquiry and/or contact our Support team ahead of purchase. Recommended alternatives for this product can be found below, along with publications, customer reviews and Q&As</p>

製品の特性

製品の状態	Liquid
保存方法	Shipped at 4°C. Store at -20°C. Stable for 12 months at -20°C.
バッファー	<p>pH: 7.40</p> <p>Preservative: 0.02% Sodium azide</p> <p>Constituents: PBS, 50% Glycerol (glycerin, glycerine), 0.87% Sodium chloride</p>
精製度	Without Mg ²⁺ and Ca ²⁺
ポリ/モノ	ポリクローナル
アイソタイプ	IgG

アプリケーション

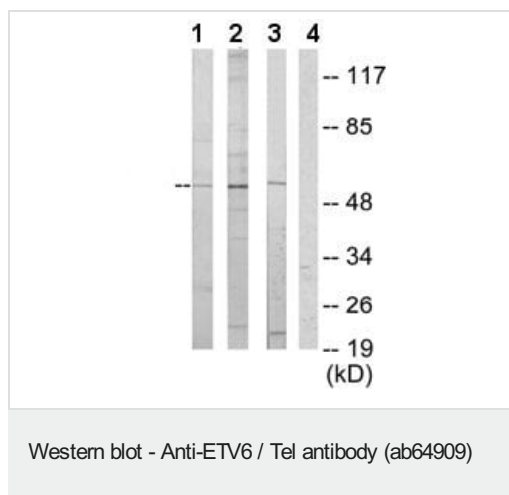
The Abpromise guarantee **Abpromise保証は、**次のテスト済みアプリケーションにおけるab64909の使用に適用されます
 アプリケーションノートには、推奨の開始希釈率がありますが、適切な希釈率につきましてはご検討ください。

アプリケーション	Abreviews	特記事項
ICC/IF		1/500 - 1/1000.
WB		1/500 - 1/1000. Detects a band of approximately 53 kDa (predicted molecular weight: 53 kDa).

ターゲット情報

機能	Transcriptional repressor; binds to the DNA sequence 5'-CCGGAAGT-3'.
組織特異性	Ubiquitous.
関連疾患	<p>Note=A chromosomal aberration involving ETV6 is found in a form of chronic myelomonocytic leukemia (CMML). Translocation t(5;12)(q33;p13) with PDGFRB. It is characterized by abnormal clonal myeloid proliferation and by progression to acute myelogenous leukemia (AML).</p> <p>Note=Chromosomal aberrations involving ETV6 are found in a form of acute myeloid leukemia (AML). Translocation t(12;22)(p13;q11) with MN1; translocation t(4;12)(q12;p13) with CHIC2.</p> <p>Note=Chromosomal aberrations involving ETV6 are found in childhood acute lymphoblastic leukemia (ALL). Translocations t(12;21)(p12;q22) and t(12;21)(p13;q22) with RUNX1/AML1.</p> <p>Note=A chromosomal aberration involving ETV6 is found in a form of pre-B acute myeloid leukemia. Translocation t(9;12)(p24;p13) with JAK2.</p> <p>Note=A chromosomal aberration involving ETV6 is found in myelodysplastic syndrome (MDS) with basophilia. Translocation t(5;12)(q31;p13) with ACSL6.</p> <p>Note=A chromosomal aberration involving ETV6 is found in acute eosinophilic leukemia (AEL). Translocation t(5;12)(q31;p13) with ACSL6.</p> <p>Note=A chromosomal aberration involving ETV6 is found in myelodysplastic syndrome (MDS). Translocation t(1;12)(p36.1;p13) with MDS2.</p> <p>Defects in ETV6 are a cause of myeloproliferative disorder chronic with eosinophilia (MPE) [MIM:131440]. A hematologic disorder characterized by malignant eosinophils proliferation.</p> <p>Note=A chromosomal aberration involving ETV6 is found in many instances of myeloproliferative disorder chronic with eosinophilia. Translocation t(5;12) with PDGFRB on chromosome 5 creating an ETV6-PDGFRB fusion protein.</p> <p>Defects in ETV6 are a cause of acute myelogenous leukemia (AML) [MIM:601626]. AML is a malignant disease in which hematopoietic precursors are arrested in an early stage of development.</p> <p>Note=A chromosomal aberration involving ETV6 is found in acute lymphoblastic leukemia. Translocation t(9;12)(p13;p13) with PAX5.</p>
配列類似性	<p>Belongs to the ETS family.</p> <p>Contains 1 ETS DNA-binding domain.</p> <p>Contains 1 PNT (pointed) domain.</p>
翻訳後修飾	Phosphorylation of Ser-257 by MAPK14 (p38) inhibits ETV6 transcriptional repression.
細胞内局在	Nucleus.

画像



All lanes : Anti-ETV6 / Tel antibody (ab64909) at 1/500 dilution

Lane 1 : extracts from HeLa cells

Lane 2 : extracts from HepG2 cells

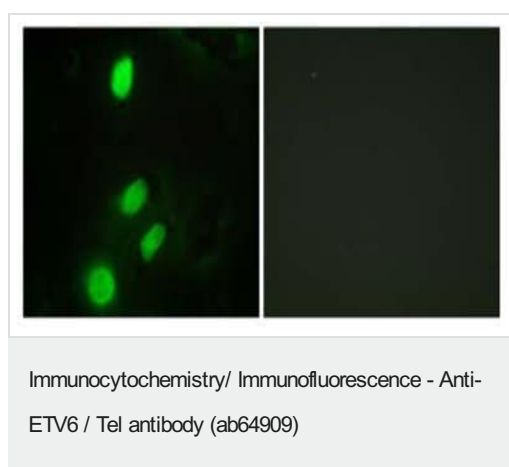
Lane 3 : extracts from Jurkat cells

Lane 4 : extracts from Jurkat cells with immunising peptide at 10 µg

Lysates/proteins at 30 µg per lane.

Predicted band size: 53 kDa

Observed band size: 53 kDa



ab64909, at 1/500 dilution, staining HeLa cells by immunofluorescence in the absence (left) or presence (right) of immunising peptide.

Please note: All products are "FOR RESEARCH USE ONLY. NOT FOR USE IN DIAGNOSTIC PROCEDURES"

Our Abpromise to you: Quality guaranteed and expert technical support

- Replacement or refund for products not performing as stated on the datasheet
- Valid for 12 months from date of delivery
- Response to your inquiry within 24 hours
- We provide support in Chinese, English, French, German, Japanese and Spanish
- Extensive multi-media technical resources to help you
- We investigate all quality concerns to ensure our products perform to the highest standards

If the product does not perform as described on this datasheet, we will offer a refund or replacement. For full details of the Abpromise, please visit <https://www.abcam.co.jp/abpromise> or contact our technical team.

Terms and conditions

- Guarantee only valid for products bought direct from Abcam or one of our authorized distributors