

# Anti-Estrogen Related Receptor beta antibody ab19331

★★★★★ [7 Abreviews](#) [12 References](#) [画像数 1](#)

### 製品の概要

製品名	Anti-Estrogen Related Receptor beta antibody
製品の詳細	Rabbit polyclonal to Estrogen Related Receptor beta
由来種	Rabbit
アプリケーション	<b>適用あり:</b> WB <b>適用なし:</b> ICC/IF
種交差性	<b>交差種:</b> Rat
免疫原	Synthetic peptide: DYELSQRHEEPRR , corresponding to amino acids 376-388 of Mouse Estrogen Related Receptor beta. <a href="#">Run BLAST with</a> <a href="#">Run BLAST with</a>

### 特記事項

The Life Science industry has been in the grips of a reproducibility crisis for a number of years. Abcam is leading the way in addressing this with our range of recombinant monoclonal antibodies and knockout edited cell lines for gold-standard validation. Please check that this product meets your needs before purchasing.

If you have any questions, special requirements or concerns, please send us an inquiry and/or contact our Support team ahead of purchase. Recommended alternatives for this product can be found below, along with publications, customer reviews and Q&As

### 製品の特性

製品の状態	Liquid
保存方法	Shipped at 4°C. Upon delivery aliquot and store at -20°C or -80°C. Avoid repeated freeze / thaw cycles.
バッファー	Preservative: 0.05% Sodium azide Constituents: PBS, 0.1% BSA
精製度	Immunogen affinity purified
ポリ/モノ	ポリクローナル
アイソタイプ	IgG

### アプリケーション

**The Abpromise guarantee**      **Abpromise保証は、次のテスト済みアプリケーションにおけるab19331の使用に適用されます**  
アプリケーションノートには、推奨の開始希釈率がありますが、適切な希釈率につきましてはご検討ください。

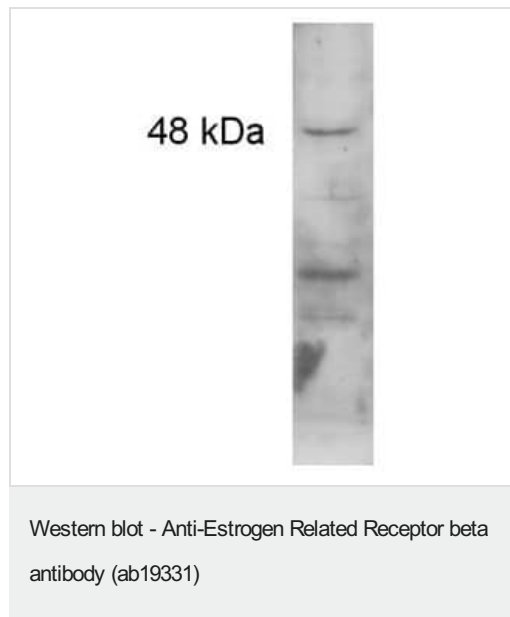
アプリケーション	Abreviews	特記事項
WB		Use a concentration of 2 µg/ml. Detects a band of approximately 48 kDa (predicted molecular weight: 48 kDa).

**追加情報**      Is unsuitable for ICC/IF.

## ターゲット情報

機能	Nuclear receptor, may regulate ESR1 transcriptional activity.
関連疾患	Defects in ESRRB are the cause of deafness autosomal recessive type 35 (DFNB35) [MIM:608565]. DFNB35 is a form of sensorineural hearing loss. Sensorineural deafness results from damage to the neural receptors of the inner ear, the nerve pathways to the brain, or the area of the brain that receives sound information.
配列類似性	Belongs to the nuclear hormone receptor family. NR3 subfamily. Contains 1 nuclear receptor DNA-binding domain.
細胞内局在	Nucleus.

## 画像



Western blot detection of Estrogen Related Receptor beta from 100 µg of rat kidney lysate (1:500).

**Please note:** All products are "FOR RESEARCH USE ONLY. NOT FOR USE IN DIAGNOSTIC PROCEDURES"

## Our Abpromise to you: Quality guaranteed and expert technical support

- Replacement or refund for products not performing as stated on the datasheet
- Valid for 12 months from date of delivery

- Response to your inquiry within 24 hours
- We provide support in Chinese, English, French, German, Japanese and Spanish
- Extensive multi-media technical resources to help you
- We investigate all quality concerns to ensure our products perform to the highest standards

If the product does not perform as described on this datasheet, we will offer a refund or replacement. For full details of the Abpromise, please visit <https://www.abcam.co.jp/abpromise> or contact our technical team.

#### **Terms and conditions**

---

- Guarantee only valid for products bought direct from Abcam or one of our authorized distributors