

# Anti-Estrogen Related Receptor alpha antibody [EPR46Y] ab76228

KO 評価済 リコンビナント RabMAb

★★★★☆ 1 Abreviews 36 References 画像数 6

### 製品の概要

製品名	Anti-Estrogen Related Receptor alpha antibody [EPR46Y]
製品の詳細	Rabbit monoclonal [EPR46Y] to Estrogen Related Receptor alpha
由来種	Rabbit
アプリケーション	<b>適用あり:</b> WB, IP, Flow Cyt
種交差性	<b>交差種:</b> Mouse, Rat, Human
免疫原	Synthetic peptide within Human Estrogen Related Receptor alpha aa 1-100 (N terminal). The exact sequence is proprietary.
ポジティブ・コントロール	HeLa whole cell lysate ( <b>ab150035</b> )
特記事項	<p>This product is a recombinant monoclonal antibody, which offers several advantages including:</p> <ul style="list-style-type: none"> <li>- High batch-to-batch consistency and reproducibility</li> <li>- Improved sensitivity and specificity</li> <li>- Long-term security of supply</li> <li>- Animal-free production</li> </ul> <p>For more information <a href="#">see here</a>.</p> <p>Our RabMAb<sup>®</sup> technology is a patented hybridoma-based technology for making rabbit monoclonal antibodies. For details on our patents, please refer to <a href="#">RabMAb<sup>®</sup> patents</a>.</p>

### 製品の特性

製品の状態	Liquid
保存方法	Shipped at 4°C. Upon delivery aliquot and store at -20°C. Avoid repeated freeze / thaw cycles.
バッファー	<p>pH: 7.20</p> <p>Preservative: 0.01% Sodium azide</p> <p>Constituents: 59% PBS, 40% Glycerol (glycerin, glycerine), 0.05% BSA</p>
精製度	Protein A purified
ポリ/モノ	モノクローナル
クローン名	EPR46Y
アイソタイプ	IgG

## アプリケーション

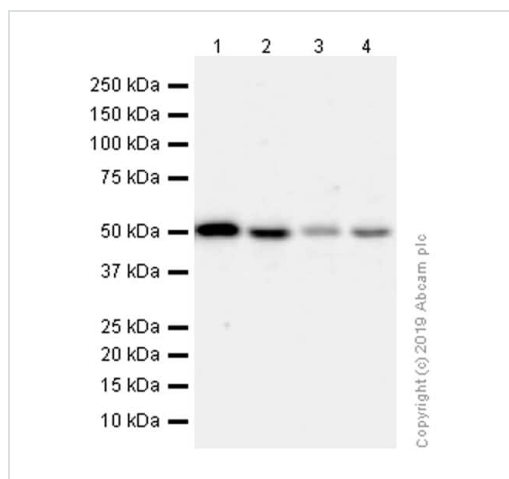
The Abpromise guarantee      Abpromise保証は、 次のテスト済みアプリケーションにおけるab76228の使用に適用されます  
アプリケーションノートには、推奨の開始希釈率がありますが、適切な希釈率につきましてはご検討ください。

アプリケーション	Abreviews	特記事項
WB	★★★★★ (1)	1/1000 - 1/10000. Predicted molecular weight: 55 kDa.
IP		1/20.
Flow Cyt		1/20.

## ターゲット情報

機能	Binds to an ERR-alpha response element (ERRE) containing a single consensus half-site, 5'-TNAAGGTCA-3'. Can bind to the medium-chain acyl coenzyme A dehydrogenase (MCAD) response element NRRE-1 and may act as an important regulator of MCAD promoter. Binds to the C1 region of the lactoferrin gene promoter. Requires dimerization and the coactivator, PGC-1A, for full activity. The ERRalpha/PGC1alpha complex is a regulator of energy metabolism.
配列類似性	Belongs to the nuclear hormone receptor family. NR3 subfamily. Contains 1 nuclear receptor DNA-binding domain.
翻訳後修飾	Phosphorylation on Ser-19 enhances sumoylation on Lys-14 increasing repression of transcriptional activity. Sumoylated by SUMO2. Main site is Lys-14 which is enhanced by phosphorylation on Ser-19, cofactor activation, and by interaction with PIAS4. Sumoylation enhances repression of transcriptional activity, but has no effect on subcellular location nor on DNA binding.
細胞内局在	Nucleus.

## 画像



Western blot - Anti-Estrogen Related Receptor alpha antibody [EPR46Y] (ab76228)

**All lanes :** Anti-Estrogen Related Receptor alpha antibody [EPR46Y] (ab76228) at 1/1000 dilution (Purified)

**Lane 1 :** MCF7 (Human breast adenocarcinoma epithelial cell) whole cell lysate

**Lane 2 :** Mouse brain lysate

**Lane 3 :** Mouse kidney lysate

**Lane 4 :** Rat brain lysate

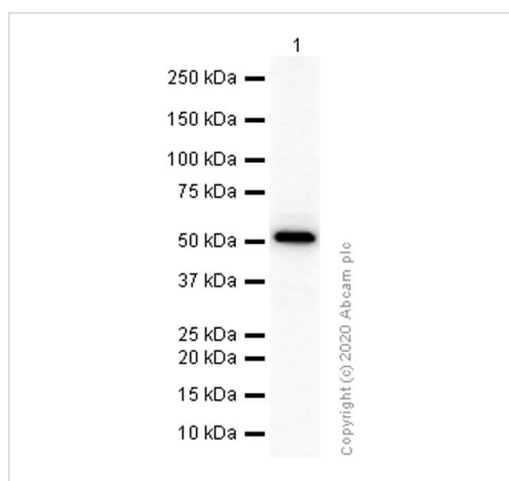
Lysates/proteins at 20 µg per lane.

## Secondary

**All lanes :** Goat Anti-Rabbit IgG H&L (HRP) ([ab97051](#)) at 1/20000 dilution

**Predicted band size:** 55 kDa

**Observed band size:** 55 kDa



Western blot - Anti-Estrogen Related Receptor alpha antibody [EPR46Y] (ab76228)

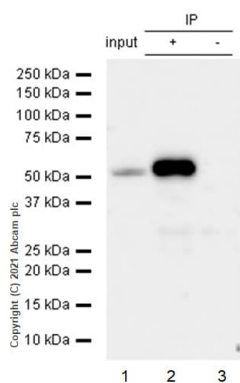
Anti-Estrogen Related Receptor alpha antibody [EPR46Y] (ab76228) at 1/1000 dilution (Purified) + HeLa (Human cervix adenocarcinoma epithelial cell) whole cell lysate at 15 µg

## Secondary

Goat Anti-Rabbit IgG H&L (HRP) ([ab97051](#)) at 1/20000 dilution

**Predicted band size:** 55 kDa

**Observed band size:** 55 kDa



Immunoprecipitation - Anti-Estrogen Related Receptor alpha antibody [EPR46Y] (ab76228)

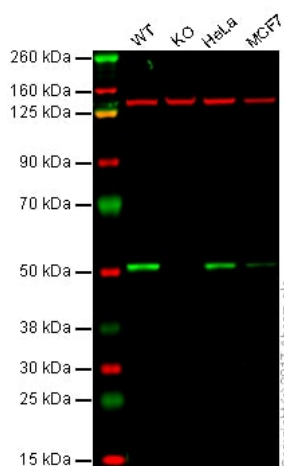
ab76228 used at 1:20 dilution (2µg) immunoprecipitating Estrogen Related Receptor alpha in HeLa whole cell lysates.

Lane 1 (input): HeLa (Human cervix adenocarcinoma epithelial cell) whole cell lysate 10µg.

Lane 2 (+): HeLa whole cell lysate.

Lane 3 (-): Rabbit monoclonal IgG (**ab172730**) instead of **ab190685** in HeLa whole cell lysate.

For western blotting, **ab227648** and VeriBlot for IP Detection Reagent (HRP)(**ab131366**) at 1/1000 dilution were used.



Western blot - Anti-Estrogen Related Receptor alpha antibody [EPR46Y] (ab76228)

**Lane 1:** Wild-type HAP1 whole cell lysate (20 µg)

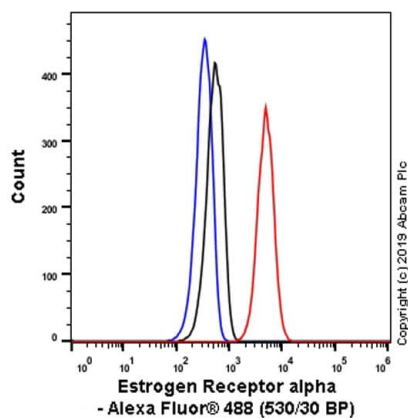
**Lane 2:** Estrogen Related Receptor alpha knockout HAP1 whole cell lysate (20 µg)

**Lane 3:** HeLa whole cell lysate (20 µg)

**Lane 4:** MCF7 whole cell lysate (20 µg)

**Lanes 1 - 4:** Merged signal (red and green). Green - ab76228 observed at 55 kDa. Red - loading control, **ab18058**, observed at 130 kDa.

ab76228 was shown to specifically react with Estrogen Related Receptor alpha in wild-type HAP1 cells as signal was lost in Estrogen Related Receptor alpha knockout cells. Wild-type and Estrogen Related Receptor alpha knockout samples were subjected to SDS-PAGE. Ab76228 and **ab18058** (Mouse anti-Vinculin loading control) were incubated overnight at 4°C at 1/1000 dilution and 1/20000 dilution respectively. Blots were developed with Goat anti-Rabbit IgG H&L (IRDye® 800CW) preabsorbed **ab216773** and Goat anti-Mouse IgG H&L (IRDye® 680RD) preabsorbed **ab216776** secondary antibodies at 1/10000 dilution for 1 hour at room temperature before imaging.



Flow cytometric analysis of 4% Paraformaldehyde fixed 90% Methanol permeabilized HeLa (Human cervix adenocarcinoma epithelial cell) cells labelling Estrogen Receptor alpha with ab76228 at 1/20 dilution (10 µg/ml) compared with a Rabbit monoclonal IgG (Black) isotype control and an unlabelled control (cells without incubation with primary antibody and secondary antibody) (Blue). A Goat anti rabbit IgG (Alexa Fluor® 488, [ab150077](#)) at 1/2000 was used as the secondary antibody.

Flow Cytometry - Anti-Estrogen Related Receptor alpha antibody [EPR46Y] (ab76228)

#### Why choose a recombinant antibody?



**Research with confidence**  
Consistent and reproducible results



**Long-term and scalable supply**  
Recombinant technology



**Success from the first experiment**  
Confirmed specificity



**Ethical standards compliant**  
Animal-free production

Anti-Estrogen Related Receptor alpha antibody [EPR46Y] (ab76228)

**Please note:** All products are "FOR RESEARCH USE ONLY. NOT FOR USE IN DIAGNOSTIC PROCEDURES"

#### Our Abpromise to you: Quality guaranteed and expert technical support

- Replacement or refund for products not performing as stated on the datasheet

- Valid for 12 months from date of delivery
- Response to your inquiry within 24 hours
- We provide support in Chinese, English, French, German, Japanese and Spanish
- Extensive multi-media technical resources to help you
- We investigate all quality concerns to ensure our products perform to the highest standards

If the product does not perform as described on this datasheet, we will offer a refund or replacement. For full details of the Abpromise, please visit <https://www.abcam.co.jp/abpromise> or contact our technical team.

#### **Terms and conditions**

---

- Guarantee only valid for products bought direct from Abcam or one of our authorized distributors