


Anti-Estrogen Related Receptor alpha antibody ab150560

画像数 1

製品の概要

製品名	Anti-Estrogen Related Receptor alpha antibody
製品の詳細	Rabbit polyclonal to Estrogen Related Receptor alpha
由来種	Rabbit
特異性	BLAST analysis of the peptide immunogen showed no homology with other Human proteins, except Estrogen Related Receptor gamma (60%).
アプリケーション	適用あり: IHC-P
種交差性	交差種: Human 交差が予測される動物種: Mouse, Rat, Horse, Hamster, Cow, Dog, Pig, Monkey, Gorilla 
免疫原	Synthetic peptide corresponding to Human Estrogen Related Receptor alpha. Synthetic peptide, corresponding to 15 amino acids from ligand-binding domain of Human Estrogen Related Receptor alpha. Database link: P11474
ポジティブ・コントロール	Human breast carcinoma tissue.
特記事項	<p>The Life Science industry has been in the grips of a reproducibility crisis for a number of years. Abcam is leading the way in addressing this with our range of recombinant monoclonal antibodies and knockout edited cell lines for gold-standard validation. Please check that this product meets your needs before purchasing.</p> <p>If you have any questions, special requirements or concerns, please send us an inquiry and/or contact our Support team ahead of purchase. Recommended alternatives for this product can be found below, along with publications, customer reviews and Q&As</p>

製品の特性

製品の状態	Liquid
保存方法	Shipped at 4°C.
バッファー	pH: 7.4 Preservative: 0.1% Sodium azide Constituent: 99% PBS
精製度	Immunogen affinity purified
ポリ/モノ	ポリクローナル

アプリケーション

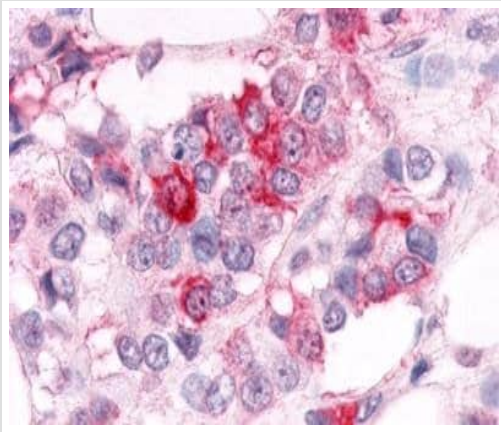
The Abpromise guarantee **Abpromise保証は、次のテスト済みアプリケーションにおけるab150560の使用に適用されず**
アプリケーションノートには、推奨の開始希釈率がありますが、適切な希釈率につきましてはご確認ください。

アプリケーション	Abreviews	特記事項
IHC-P		Use a concentration of 11 - 21 µg/ml. Perform heat mediated antigen retrieval with citrate buffer pH 6 before commencing with IHC staining protocol.

ターゲット情報

機能	Binds to an ERR-alpha response element (ERRE) containing a single consensus half-site, 5'-TNAAGGTCA-3'. Can bind to the medium-chain acyl coenzyme A dehydrogenase (MCAD) response element NRRE-1 and may act as an important regulator of MCAD promoter. Binds to the C1 region of the lactoferrin gene promoter. Requires dimerization and the coactivator, PGC-1A, for full activity. The ERRalpha/PGC1alpha complex is a regulator of energy metabolism.
配列類似性	Belongs to the nuclear hormone receptor family. NR3 subfamily. Contains 1 nuclear receptor DNA-binding domain.
翻訳後修飾	Phosphorylation on Ser-19 enhances sumoylation on Lys-14 increasing repression of transcriptional activity. Sumoylated by SUMO2. Main site is Lys-14 which is enhanced by phosphorylation on Ser-19, cofactor activation, and by interaction with PIAS4. Sumoylation enhances repression of transcriptional activity, but has no effect on subcellular location nor on DNA binding.
細胞内局在	Nucleus.

画像



Immunohistochemical analysis of formalin-fixed, paraffin-embedded Human breast carcinoma tissue, labeling Estrogen Related Receptor alpha using ab150560 at 21 µg/ml.

Immunohistochemistry (Formalin/PFA-fixed paraffin-embedded sections) - Anti-Estrogen Related Receptor alpha antibody (ab150560)

Please note: All products are "FOR RESEARCH USE ONLY. NOT FOR USE IN DIAGNOSTIC PROCEDURES"

Our Abpromise to you: Quality guaranteed and expert technical support

- Replacement or refund for products not performing as stated on the datasheet
- Valid for 12 months from date of delivery
- Response to your inquiry within 24 hours
- We provide support in Chinese, English, French, German, Japanese and Spanish
- Extensive multi-media technical resources to help you
- We investigate all quality concerns to ensure our products perform to the highest standards

If the product does not perform as described on this datasheet, we will offer a refund or replacement. For full details of the Abpromise, please visit <https://www.abcam.co.jp/abpromise> or contact our technical team.

Terms and conditions

- Guarantee only valid for products bought direct from Abcam or one of our authorized distributors