

Anti-Estrogen Receptor alpha (phospho S118) antibody [E91] ab32396

リコンビナント RabMAb

★★★★☆ **2 Abreviews** **18 References** 画像数 10

製品の概要

製品名	Anti-Estrogen Receptor alpha (phospho S118) antibody [E91]
製品の詳細	Rabbit monoclonal [E91] to Estrogen Receptor alpha (phospho S118)
由来種	Rabbit
特異性	This antibody only detects ER alpha phosphorylated on Serine 118.
アプリケーション	適用あり: ChIC/CUT&RUN-seq, Dot blot, WB, ICC/IF 適用なし: Flow Cyt or IHC-P
種交差性	交差種: Human
免疫原	Synthetic peptide within Human Estrogen Receptor alpha. The exact sequence is proprietary.
ポジティブ・コントロール	MCF7 cell lysate human breast adenocarcinoma
特記事項	<p>This product is a recombinant monoclonal antibody, which offers several advantages including:</p> <ul style="list-style-type: none">- High batch-to-batch consistency and reproducibility- Improved sensitivity and specificity- Long-term security of supply- Animal-free production <p>For more information see here.</p> <p>Our RabMAb[®] technology is a patented hybridoma-based technology for making rabbit monoclonal antibodies. For details on our patents, please refer to RabMAb[®] patents.</p> <p>Mouse, Rat: We have preliminary internal testing data to indicate this antibody may not react with these species. Please contact us for more information.</p>

製品の特性

製品の状態	Liquid
保存方法	Shipped at 4°C. Store at +4°C short term (1-2 weeks). Upon delivery aliquot. Store at -20°C long term. Avoid freeze / thaw cycle.
バッファー	pH: 7.20 Preservative: 0.01% Sodium azide Constituents: 59% PBS, 40% Glycerol (glycerin, glycerine), 0.05% BSA

精製度	Protein A purified
ポリ/モノ	モノクローナル
クローン名	E91
アイソタイプ	IgG

アプリケーション

The Abpromise guarantee **Abpromise保証は、次のテスト済みアプリケーションにおけるab32396の使用に適用されます**
 アプリケーションノートには、推奨の開始希釈率がありますが、適切な希釈率につきましてはご検討ください。

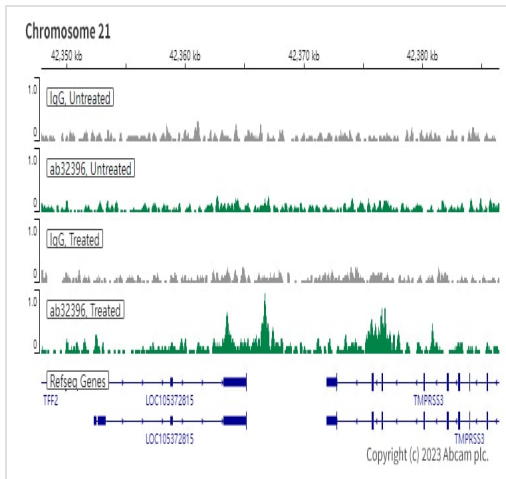
アプリケーション	Abreviews	特記事項
ChIC/CUT&RUN-seq		Use at an assay dependent concentration.
Dot blot		1/1000.
WB	★★★★☆ (2)	1/1000. Detects a band of approximately 66 kDa (predicted molecular weight: 66 kDa).
ICC/IF		1/200. For unpurified use at 1/50 - 1/100 dilution.

追加情報 Is unsuitable for Flow Cyt or IHC-P.

ターゲット情報

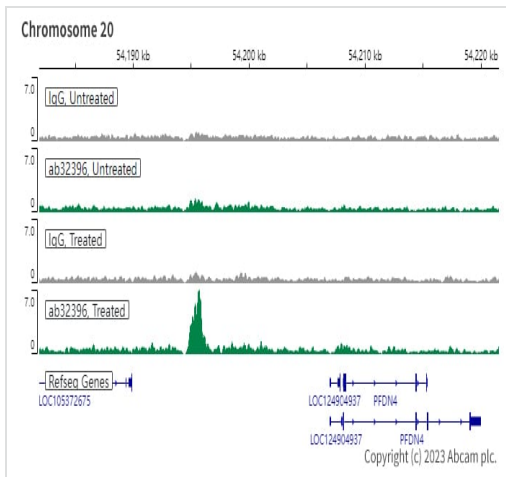
機能	Nuclear hormone receptor. The steroid hormones and their receptors are involved in the regulation of eukaryotic gene expression and affect cellular proliferation and differentiation in target tissues. Can activate the transcriptional activity of TFF1.
配列類似性	Belongs to the nuclear hormone receptor family. NR3 subfamily. Contains 1 nuclear receptor DNA-binding domain.
ドメイン	Composed of three domains: a modulating N-terminal domain, a DNA-binding domain and a C-terminal ligand-binding domain.
翻訳後修飾	Phosphorylated by cyclin A/CDK2. Phosphorylation probably enhances transcriptional activity. Glycosylated; contains N-acetylglucosamine, probably O-linked. Ubiquitinated. Deubiquitinated by OTUB1. Dimethylated by PRMT1 at Arg-260. The methylation may favor cytoplasmic localization. Palmitoylated (isoform 3). Not biotinylated (isoform 3).
細胞内局在	Nucleus. Cytoplasm. Cell membrane. A minor fraction is associated with the inner membrane and Nucleus. Cytoplasm. Cell membrane. Associated with the inner membrane via palmitoylation.

画像



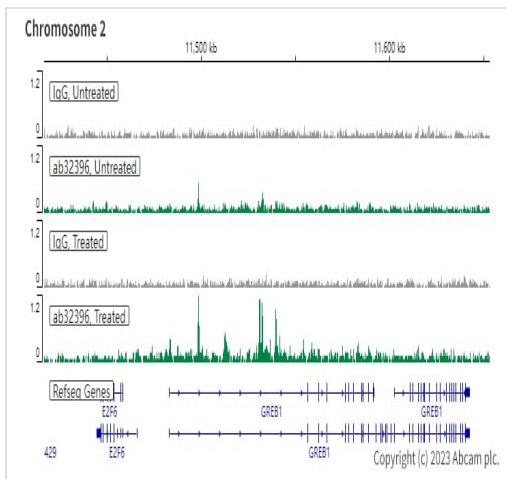
ChIC/CUT&RUN sequencing - Anti-Estrogen Receptor alpha (phospho S118) antibody [E91] (ab32396)

ChIC/CUT&RUN was performed using a pAG-MNase at a final concentration of 700 ng/ μ L, 2.5×10^5 MCF7 (Human breast adenocarcinoma epithelial cell) cells treated with phenol red free medium and 5% charcoal stripped FBS for 3 days than treated with β -estradiol (10 nM 45 min) and 5 μ g of ab32396 [E91]. The resulting DNA was sequenced on the Illumina NovaSeq 6000 to a depth of 10 million reads. The negative IgG control **ab172730** is also shown. The University of Geneva owns patents relevant to ChIC (Chromatin Immuno-Cleavage) methods.



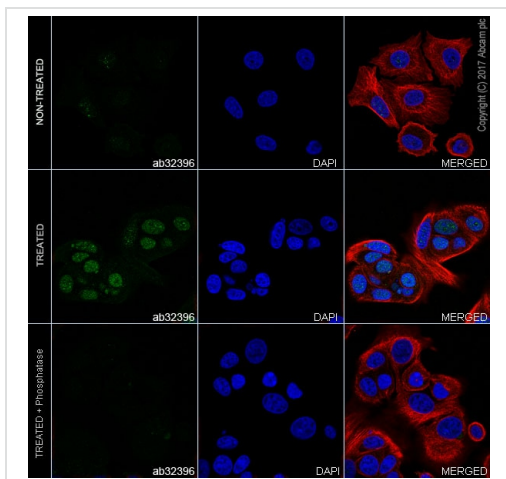
ChIC/CUT&RUN sequencing - Anti-Estrogen Receptor alpha (phospho S118) antibody [E91] (ab32396)

ChIC/CUT&RUN was performed using a pAG-MNase at a final concentration of 700 ng/ μ L, 2.5×10^5 MCF7 (Human breast adenocarcinoma epithelial cell) cells treated with phenol red free medium and 5% charcoal stripped FBS for 3 days than treated with β -estradiol (10 nM 45 min) and 5 μ g of ab32396 [E91]. The resulting DNA was sequenced on the Illumina NovaSeq 6000 to a depth of 10 million reads. The negative IgG control **ab172730** is also shown. The University of Geneva owns patents relevant to ChIC (Chromatin Immuno-Cleavage) methods.



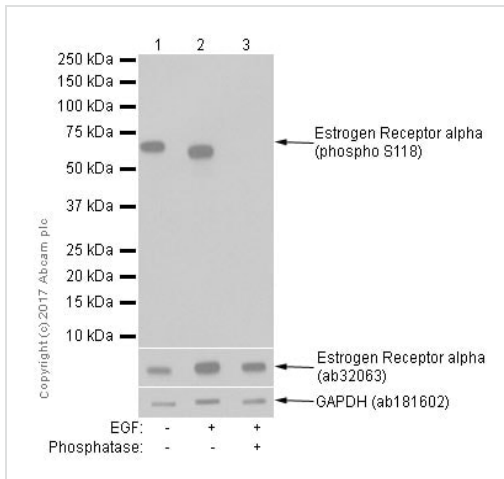
ChIC/CUT&RUN sequencing - Anti-Estrogen Receptor alpha (phospho S118) antibody [E91] (ab32396)

ChIC/CUT&RUN was performed using a pAG-MNase at a final concentration of 700 ng/ μ L, 2.5×10^5 MCF7 (Human breast adenocarcinoma epithelial cell) cells treated with phenol red free medium and 5% charcoal stripped FBS for 3 days then treated with β -estradiol (10 nM 45 min) and 5 μ g of ab32396 [E91]. The resulting DNA was sequenced on the Illumina NovaSeq 6000 to a depth of 10 million reads. The negative IgG control **ab172730** is also shown. The University of Geneva owns patents relevant to ChIC (Chromatin Immuno-Cleavage) methods.



Immunocytochemistry/ Immunofluorescence - Anti-Estrogen Receptor alpha (phospho S118) antibody [E91] (ab32396)

Immunocytochemistry/ Immunofluorescence analysis of MCF7 (Human breast adenocarcinoma epithelial cell) treated with EGF (100ng/ml, 5min) and treated with Lambda Protein Phosphatase 311 for 2h cells labeling Estrogen receptor alpha (phospho S118) with purified ab32396 at 1:200 dilution (8.9 μ g/ml). Cells were fixed in 4% Paraformaldehyde and permeabilized with 0.1% tritonX-100. Cells were counterstained with Ab195889 Anti-alpha Tubulin antibody [DM1A] - Microtubule Marker (Alexa Fluor[®] 594) 1:200 (2.5 μ g/ml), **ab150077** Goat anti rabbit IgG(Alexa Fluor[®] 488) was used as the secondary antibody at 1:1000 dilution. DAPI nuclear counterstain. PBS instead of the primary antibody was used as the secondary antibody only control.



Western blot - Anti-Estrogen Receptor alpha (phospho S118) antibody [E91] (ab32396)

All lanes : Anti-Estrogen Receptor alpha (phospho S118) antibody [E91] (ab32396) at 1/1000 dilution (purified)

Lane 1 : MCF-7 (Human breast adenocarcinoma epithelial cell) whole cell lysate

Lane 2 : MCF-7 (Human breast adenocarcinoma epithelial cell) treated with epidermal growth factor. Whole cell lysates

Lane 3 : MCF-7 (Human breast adenocarcinoma epithelial cell) treated with epidermal growth factor. Whole cell lysates. Then the membrane was incubated with phosphatase.

Lysates/proteins at 15 µg per lane.

Secondary

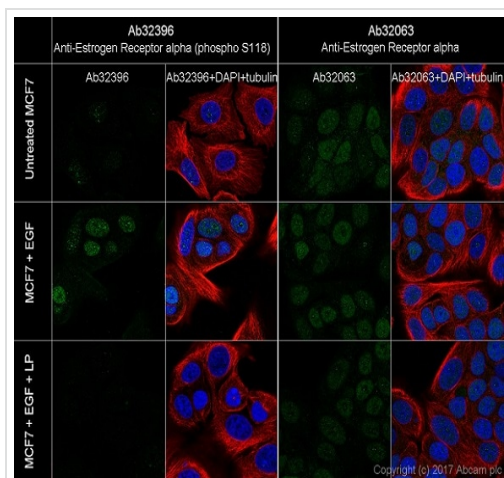
All lanes : Goat Anti-Rabbit IgG H&L (HRP) (**ab97051**) at 1/20000 dilution

Predicted band size: 66 kDa

Observed band size: 60 kDa

Exposure time: 5 seconds

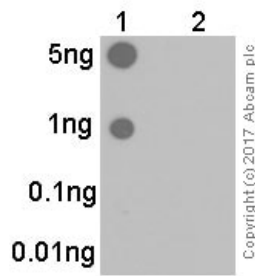
Blocking and diluting buffer and concentration: 5% NFDN/TBST.



Immunocytochemistry/ Immunofluorescence - Anti-Estrogen Receptor alpha (phospho S118) antibody [E91] (ab32396)

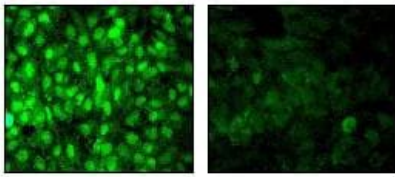
Immunocytochemistry/ Immunofluorescence analysis of MCF7 (Human breast adenocarcinoma cell line) cells labeling Estrogen Receptor alpha (phospho S118) with unpurified ab32396 at 5 µg/ml (1/200 dilution). Cells were fixed with 4% Paraformaldehyde and permeabilized with 0.1% tritonX-100. **ab150077**, an AlexaFluor[®]488 Goat anti-Rabbit was used as the secondary antibody at 2 µg/ml (1/1000 dilution). **ab195889**, Anti-alpha Tubulin antibody [DM1A] - Microtubule Marker (Alexa Fluor[®] 594) was used to counterstain at 2.5 µg/ml (1/200 dilution). DAPI nuclear counterstain.

Confocal image showing the signal increased after EGF (100ng/ml, 5 min) treatment and decreased after Lambda Protein Phosphatase treatment (31°C for 2 hours).



Dot Blot - Anti-Estrogen Receptor alpha (phospho S118) antibody [E91] (ab32396)

Dot blot analysis of Lane 1: Estrogen Receptor alpha (pS118) phospho peptide and Lane 2: Estrogen Receptor alpha non-phospho peptide labeling Estrogen Receptor alpha (phospho S118) with unpurified ab32396 at 1/1000 dilution. 5% NFDN/TBST was used as the diluting and blocking buffer. **ab97051**, Goat Anti-Rabbit IgG, (H+L), Peroxidase conjugated was used as the secondary antibody at 1/100000 dilution. Exposure time: 3 minutes.

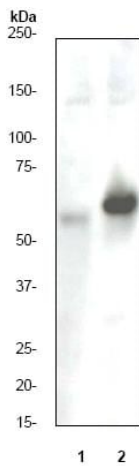


A

B

Immunofluorescent staining of (A) untreated and (B) Phosphatase-treated MCF-7 cells using unpurified ab32396.

Immunocytochemistry/ Immunofluorescence - Anti-Estrogen Receptor alpha (phospho S118) antibody [E91] (ab32396)



Western blot - Anti-Estrogen Receptor alpha (phospho S118) antibody [E91] (ab32396)

All lanes : Anti-Estrogen Receptor alpha (phospho S118) antibody [E91] (ab32396) at 1/1000 dilution (unpurified)

Lane 1 : MCF7 cell lysate (untreated).

Lane 2 : MCF7 cell lysate (treated with b-Estradiol and EGF).

Predicted band size: 66 kDa

Observed band size: 60 kDa

Why choose a recombinant antibody?



Research with confidence
Consistent and reproducible results



Long-term and scalable supply
Recombinant technology



Success from the first experiment
Confirmed specificity



Ethical standards compliant
Animal-free production

Anti-Estrogen Receptor alpha (phospho S118)
antibody [E91] (ab32396)

Please note: All products are "FOR RESEARCH USE ONLY. NOT FOR USE IN DIAGNOSTIC PROCEDURES"

Our Abpromise to you: Quality guaranteed and expert technical support

- Replacement or refund for products not performing as stated on the datasheet
- Valid for 12 months from date of delivery
- Response to your inquiry within 24 hours
- We provide support in Chinese, English, French, German, Japanese and Spanish
- Extensive multi-media technical resources to help you
- We investigate all quality concerns to ensure our products perform to the highest standards

If the product does not perform as described on this datasheet, we will offer a refund or replacement. For full details of the Abpromise, please visit <https://www.abcam.co.jp/abpromise> or contact our technical team.

Terms and conditions

- Guarantee only valid for products bought direct from Abcam or one of our authorized distributors