

Anti-Estrogen Receptor alpha antibody [E115] - ChIP Grade ab32063

リコンビナント **RabMAb**

★★★★★ **21 Abreviews** **143 References** 画像数 17

製品の概要

製品名	Anti-Estrogen Receptor alpha antibody [E115] - ChIP Grade
製品の詳細	Rabbit monoclonal [E115] to Estrogen Receptor alpha - ChIP Grade
由来種	Rabbit
特異性	Expression levels of ER alpha protein vary with sample type. This antibody is unsuitable to test ovary and the tissues with low expression level of Estrogen Receptor alpha, such as kidney, lung and brain, in western blot. And it failed to show good IHC signal on mouse and rat tissue sections when using our IHC testing conditions. For our in-house testing we tested the antibody on a mouse tissue array (breast, spleen, lung, stomach, muscle, pancreas, liver, colon, brain, kidney).
アプリケーション	適用あり: ICC/IF, ChIP, WB, Flow Cyt (Intra), IHC-P
種交差性	交差種: Mouse, Rat, Human
免疫原	Synthetic peptide. This information is proprietary to Abcam and/or its suppliers. (Peptide available as ab203371)
ポジティブ・コントロール	WB: MCF-7 and T47-D cell lysates; Human uterus and ovary cancer tissue lysates; Mouse and rat uterus lysates; Rat and mouse pituitary whole tissue lysates. IHC-P: Human breast carcinoma and endometrial carcinoma tissues; human endometrium and breast tissues. ICC/IF: MCF-7 cells, 4T1 cells and GH3 cells. Flow Cyt (intra): MCF-7 cells. ChIP: Chromatin prepared from MCF-7+ÅŸ-estraiol 30 min cells.
特記事項	<p>This product is a recombinant monoclonal antibody, which offers several advantages including:</p> <ul style="list-style-type: none"> - High batch-to-batch consistency and reproducibility - Improved sensitivity and specificity - Long-term security of supply - Animal-free production <p>For more information see here.</p> <p>Our RabMAb® technology is a patented hybridoma-based technology for making rabbit monoclonal antibodies. For details on our patents, please refer to RabMAb® patents.</p>

製品の特性

製品の状態	Liquid
-------	--------

保存方法	Shipped at 4°C. Store at +4°C short term (1-2 weeks). Upon delivery aliquot. Store at -20°C. Avoid freeze / thaw cycle.
バッファー	pH: 7.20 Preservative: 0.01% Sodium azide Constituents: 59% PBS, 40% Glycerol, 0.05% BSA
精製度	Protein A purified
ポリ/モノ	モノクローナル
クローン名	E115
アイソタイプ	IgG

アプリケーション

The Abpromise guarantee **Abpromise保証は、次のテスト済みアプリケーションにおけるab32063の使用に適用されます**
アプリケーションノートには、推奨の開始希釈率がありますが、適切な希釈率につきましてはご検討ください。

アプリケーション	Abreviews	特記事項
ICC/IF		1/200.
ChIP	★★★★★ (1)	Use 4 µg for 25 µg of chromatin.
WB	★★★★★ (5)	1/1000. Detects a band of approximately 60 kDa (predicted molecular weight: 67 kDa).
Flow Cyt (Intra)		1/1000. ab172730 - Rabbit monoclonal IgG, is suitable for use as an isotype control with this antibody. We recommend to use a 30 min blocking step(1XPBS/10%goat serum/0,3M Glycin).
IHC-P	★★★★★ (11)	1/200 - 1/5000. Perform heat mediated antigen retrieval with Tris/EDTA buffer pH 9.0 before commencing with IHC staining protocol. For unpurified, use 1/50 - 1/100. The antibody failed to show good IHC signal on mouse and rat tissue sections when applied using our IHC testing conditions.

ターゲット情報

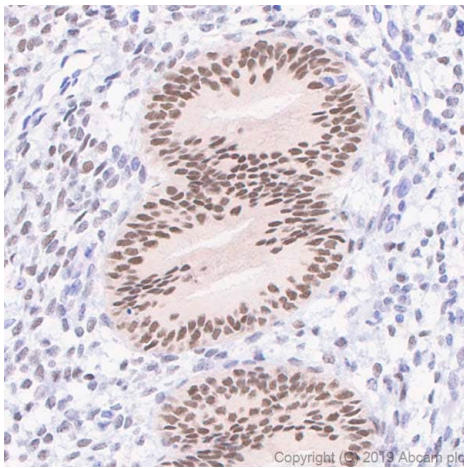
機能	Nuclear hormone receptor. The steroid hormones and their receptors are involved in the regulation of eukaryotic gene expression and affect cellular proliferation and differentiation in target tissues. Can activate the transcriptional activity of TFF1.
配列類似性	Belongs to the nuclear hormone receptor family. NR3 subfamily. Contains 1 nuclear receptor DNA-binding domain.
ドメイン	Composed of three domains: a modulating N-terminal domain, a DNA-binding domain and a C-terminal ligand-binding domain.
翻訳後修飾	Phosphorylated by cyclin A/CDK2. Phosphorylation probably enhances transcriptional activity. Glycosylated; contains N-acetylglucosamine, probably O-linked. Ubiquitinated. Deubiquitinated by OTUB1.

Dimethylated by PRMT1 at Arg-260. The methylation may favor cytoplasmic localization.
Palmitoylated (isoform 3). Not biotinylated (isoform 3).

細胞内局在

Nucleus. Cytoplasm. Cell membrane. A minor fraction is associated with the inner membrane and
Nucleus. Cytoplasm. Cell membrane. Associated with the inner membrane via palmitoylation.

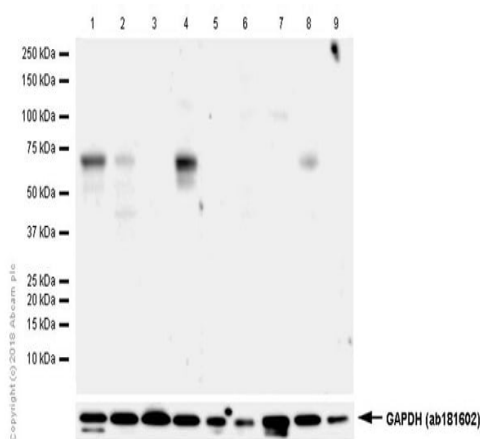
画像



Immunohistochemistry (Formalin/PFA-fixed paraffin-embedded sections) - Anti-Estrogen Receptor alpha antibody [E115] - ChIP Grade (ab32063)

Immunohistochemical staining of paraffin embedded human endometrium tissue with ab32063 at a dilution of 1/5000. The secondary antibody used was Goat Anti-Rabbit IgG H&L (HRP Polymer). The sample is counter-stained with hematoxylin. Antigen retrieval was heat mediated using [ab93684](#) (Tris/EDTA buffer, pH 9.0).

Nuclear staining on human endometrium.



Western blot - Anti-Estrogen Receptor alpha antibody [E115] - ChIP Grade (ab32063)

All lanes : Anti-Estrogen Receptor alpha antibody [E115] - ChIP Grade (ab32063) at 1/200 dilution

Lane 1 : Human uterus tissue lysates

Lane 2 : Human kidney tissue lysates

Lane 3 : Human brain tissue lysates

Lane 4 : Mouse uterus tissue lysates

Lane 5 : Mouse ovary tissue lysates

Lane 6 : Mouse kidney tissue lysates

Lane 7 : Mouse brain tissue lysates

Lane 8 : Rat uterus tissue lysates

Lane 9 : Rat ovary tissue lysates

Lysates/proteins at 20 µg per lane.

Secondary

All lanes : Goat Anti-Rabbit IgG (HRP) with minimal cross-reactivity with human IgG at 1/2000 dilution

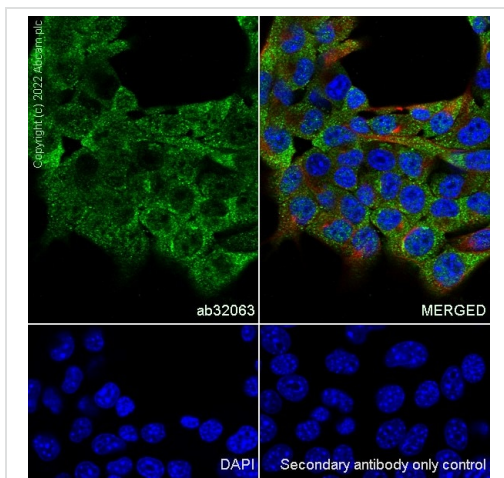
Predicted band size: 67 kDa

Observed band size: 67 kDa

Exposure time: 180 seconds

Blocking and diluting buffer: 5% NFDM/TBST.

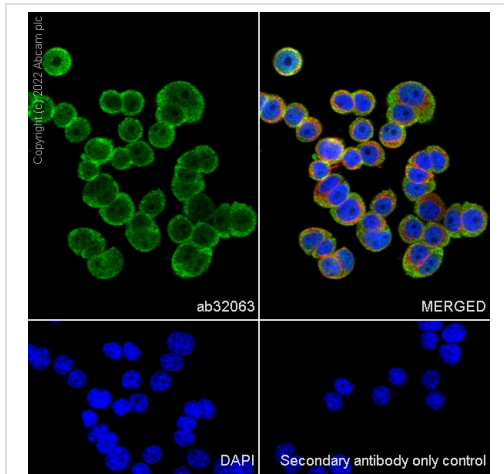
The expression level of ER66 is high in uterus, moderate in ovary and low in kidney, lung, brain, liver, heart (PMID: 20861365, 24977106, 23675257, 23940668, 22070562), especially low in the tissues from male or young female animals (PMID: 26384003, 23940668). ab32063 is unsuitable to test ovary and the tissues with low expression level of Estrogen Receptor alpha in western blot.



Immunocytochemistry/ Immunofluorescence - Anti-Estrogen Receptor alpha antibody [E115] - ChIP Grade (ab32063)

Immunofluorescent analysis of 4% paraformaldehyde-fixed, 0.1% Triton X-100 permeabilized 4T1 (mouse mammary gland carcinoma epithelial cell line) cells labelling Estrogen Receptor alpha with primary antibody anti-Estrogen Receptor alpha (ab32063) at 1/200 dilution, followed by Goat Anti-Rabbit IgG H&L (Alexa Fluor[®] 488) ([ab150081](#)) secondary antibody at 1/1000 dilution (2.0 µg/mL). Confocal image showing cytoplasmic and nuclear staining in 4T1 cells. Anti-alpha Tubulin mouse monoclonal antibody - Microtubule Marker (Alexa Fluor[®] 594) ([ab195889](#)) was used to counterstain tubulin at 1/200 dilution (2.5 µg/mL). The nuclear counter stain is DAPI (blue).

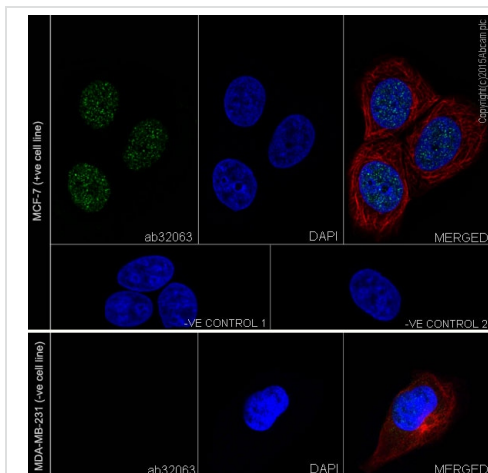
The secondary antibody only control is : Secondary antibody is [ab150081](#) Goat Anti-Rabbit IgG H&L (Alexa Fluor[®] 488) at 1/1000 dilution (2.0 µg/mL).



Immunocytochemistry/ Immunofluorescence - Anti-Estrogen Receptor alpha antibody [E115] - ChIP Grade (ab32063)

Immunofluorescent analysis of 4% paraformaldehyde-fixed, 0.1% Triton X-100 permeabilized GH3 (rat pituitary epithelial cell line) cells labelling Estrogen Receptor alpha with primary antibody anti-Estrogen Receptor alpha (ab32063) at 1/200 dilution, followed by Goat Anti-Rabbit IgG H&L (Alexa Fluor® 488) (**ab150081**) secondary antibody at 1/1000 dilution (2.0 µg/mL). Confocal image showing cytoplasmic and nuclear staining in GH3 cells. Anti-alpha Tubulin mouse monoclonal antibody - Microtubule Marker (Alexa Fluor® 594) (**ab195889**) was used to counterstain tubulin at 1/200 dilution (2.5 µg/mL). The nuclear counter stain is DAPI (blue).

The secondary antibody only control is : Secondary antibody is **ab150081** Goat Anti-Rabbit IgG H&L (Alexa Fluor® 488) at 1/1000 dilution (2.0 µg/mL).

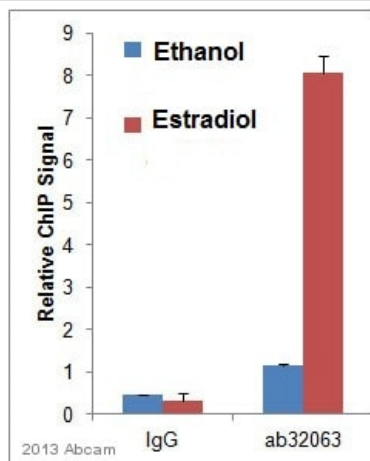


Immunocytochemistry/ Immunofluorescence - Anti-Estrogen Receptor alpha antibody [E115] - ChIP Grade (ab32063)

Immunocytochemistry/Immunofluorescence analysis of MCF-7 cells labelling Estrogen Receptor alpha with purified ab32063 at 1/1000. Cells were fixed with 4% paraformaldehyde and permeabilized with 0.1% Triton X-100. **ab150077**, an Alexa Fluor® 488-conjugated goat anti-rabbit IgG (1/1000) was used as the secondary antibody. The cells were co-stained with **ab7291**, a mouse anti-tubulin (1/1000) using **ab150120**, an Alexa Fluor® 594-conjugated goat anti-mouse IgG (1/1000) as the secondary antibody. Nuclei counterstained with DAPI (blue).

Control 1: primary antibody (1/1000) and secondary antibody, **ab150120**, an Alexa Fluor® 594-conjugated goat anti-mouse IgG (1/1000).

Control 2: **ab7291** (1/1000) and secondary antibody, **ab150077**, an Alexa Fluor® 488-conjugated goat anti-rabbit IgG (1/1000).



ChIP - Anti-Estrogen Receptor alpha antibody

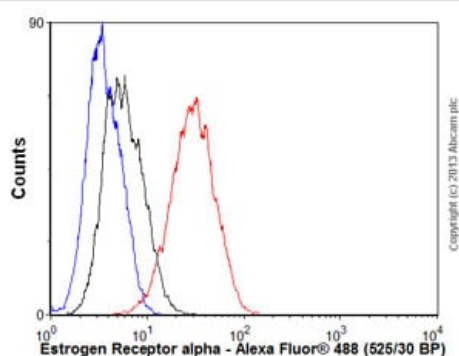
[E115] - ChIP Grade (ab32063)

This image is courtesy of an anonymous Abreview

ChIP analysis using unpurified ab32063 binding Estrogen Receptor alpha in MCF7 cells derived from Human breast carcinoma. Cells were cross-linked for 10 minutes with 1% formaldehyde. Samples were incubated with undiluted primary antibody for 16 hours at 4°C. Protein binding was detected using real-time PCR.

Positive control: Estrogen treated MCF7 cells tested at PS2 promoter.

Negative Control: IgG ChIP and ethanol-depleted cells tested at PS2 promoter.



Flow Cytometry (Intracellular) - Anti-Estrogen

Receptor alpha antibody [E115] - ChIP Grade

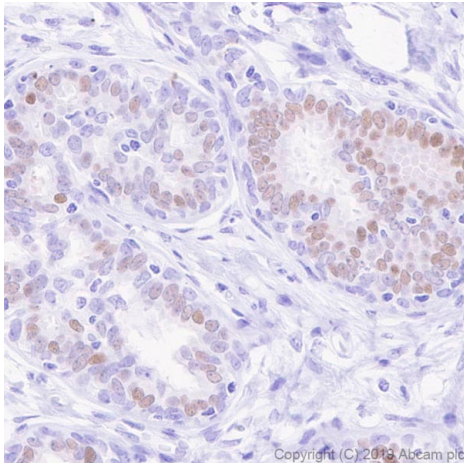
(ab32063)

Overlay histogram showing MCF7 cells stained with unpurified ab32063 (red line). The cells were fixed with 4% paraformaldehyde (10 min) and then permeabilized with 0.1% PBS-Tween for 20 min.

The cells were then incubated in 1x PBS / 10% normal goat serum / 0.3M glycine to block non-specific protein-protein interactions followed by the antibody (ab32063, 1/1000 dilution) for 30 min at 22°C. The secondary antibody used was Alexa Fluor® 488 goat anti-rabbit IgG (H+L) ([ab150077](#)) at 1/2000 dilution for 30 min at 22°C. Isotype control antibody (black line) was rabbit IgG (monoclonal) (1µg/1x10⁶ cells) used under the same conditions.

Unlabelled sample (blue line) was also used as a control.

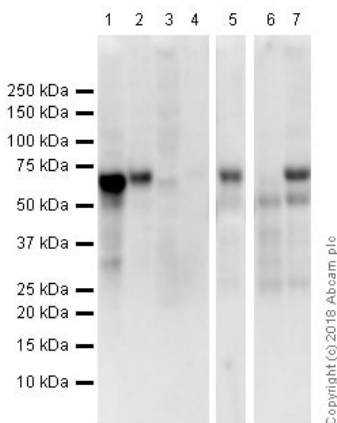
Acquisition of >5,000 events were collected using a 20mW Argon ion laser (488nm) and 525/30 bandpass filter. This antibody gave a positive signal in MCF7 cells fixed with 80% methanol (5 min)/permeabilized with 0.1% PBS-Tween for 20 min used under the same conditions.



Immunohistochemistry (Formalin/PFA-fixed paraffin-embedded sections) - Anti-Estrogen Receptor alpha antibody [E115] - ChIP Grade (ab32063)

Immunohistochemical staining of paraffin embedded human breast carcinoma tissue with ab32063 at a dilution of 1/5000. The secondary antibody used was Goat Anti-Rabbit IgG H&L (HRP Polymer). The sample is counter-stained with hematoxylin. Antigen retrieval was heat mediated using [ab93684](#) (Tris/EDTA buffer, pH 9.0).

Nuclear staining on human breast carcinoma.



Western blot - Anti-Estrogen Receptor alpha antibody [E115] - ChIP Grade (ab32063)

All lanes : Anti-Estrogen Receptor alpha antibody [E115] - ChIP Grade (ab32063) at 1/1000 dilution

Lane 1 : MCF7 (Human breast adenocarcinoma epithelial cell). Whole cell lysates

Lane 2 : T-47D (human mammary gland ductal carcinoma epithelial cell). Whole cell lysates

Lane 3 : MDA-MB231 (Human breast adenocarcinoma epithelial cell) Whole cell lysates (Negative control)

Lane 4 : HepG2 (Human hepatocellular carcinoma epithelial cell) Whole cell lysates (Negative control)

Lane 5 : Human uterus whole tissue lysate

Lane 6 : Human ovary whole tissue lysate

Lane 7 : Human ovary cancer whole tissue lysate

Lysates/proteins at 20 µg per lane.

Secondary

All lanes : Goat Anti-Rabbit IgG H&L (HRP) ([ab97051](#)) at 1/20000

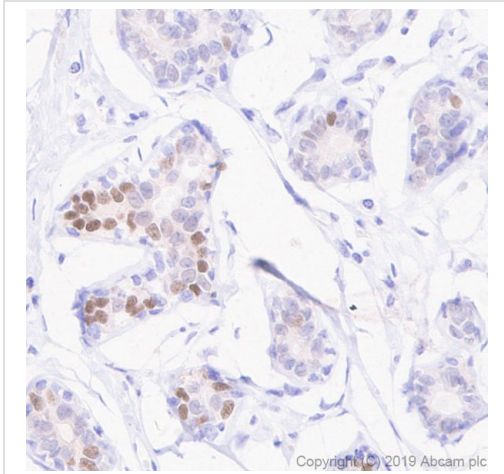
dilution

Predicted band size: 67 kDa

Observed band size: 68 kDa

Exposure time: 50 seconds

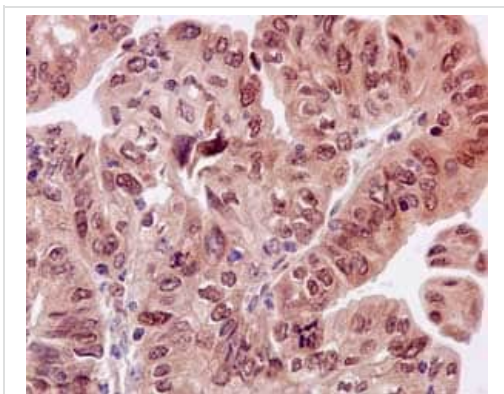
Blocking and diluting buffer: 5% NFDM/TBST.



Immunohistochemical staining of paraffin embedded human breast tissue with ab32063 at a dilution of 1/5000. The secondary antibody used was Goat Anti-Rabbit IgG H&L (HRP Polymer). The sample is counter-stained with hematoxylin. Antigen retrieval was heat mediated using [ab93684](#) (Tris/EDTA buffer, pH 9.0).

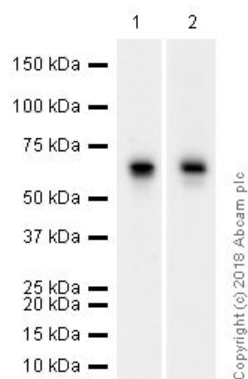
Nuclear staining on human breast.

Immunohistochemistry (Formalin/PFA-fixed paraffin-embedded sections) - Anti-Estrogen Receptor alpha antibody [E115] - ChIP Grade (ab32063)



Immunohistochemical staining of paraffin embedded human endometrial carcinoma with purified ab32063 at a working dilution of 1 in 200. The secondary antibody used is [ab97051](#), a HRP goat anti-rabbit IgG (H+L), at 1/500. The sample is counter-stained with hematoxylin. Antigen retrieval was performed using Tris-EDTA buffer, pH 9.0.

Immunohistochemistry (Formalin/PFA-fixed paraffin-embedded sections) - Anti-Estrogen Receptor alpha antibody [E115] - ChIP Grade (ab32063)



Western blot - Anti-Estrogen Receptor alpha antibody [E115] - ChIP Grade (ab32063)

All lanes : Anti-Estrogen Receptor alpha antibody [E115] - ChIP Grade (ab32063) at 1/1000 dilution

Lane 1 : Rat pituitary whole tissue lysate

Lane 2 : Mouse pituitary whole tissue lysate

Lysates/proteins at 20 µg per lane.

Secondary

All lanes : Goat Anti-Rabbit IgG H&L (HRP) ([ab97051](#)) at 1/20000 dilution

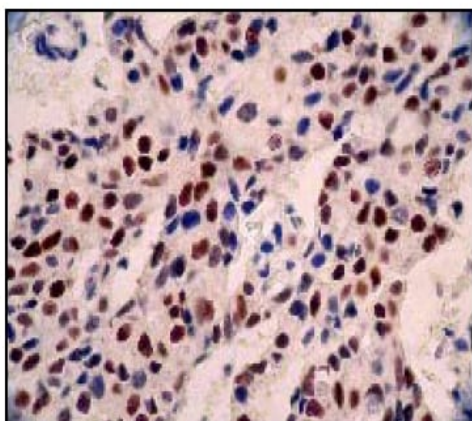
Predicted band size: 67 kDa

Observed band size: 68 kDa

Exposure time: 1st lane: 85 seconds

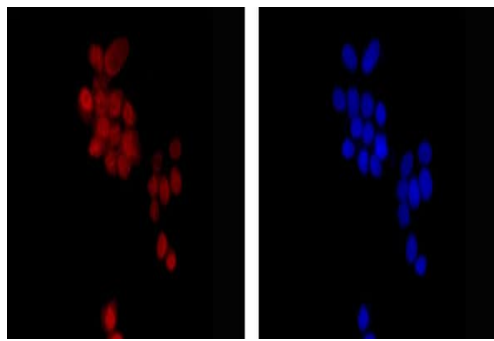
2nd lane: 32 seconds

Blocking and diluting buffer: 5% NFDm/TBST



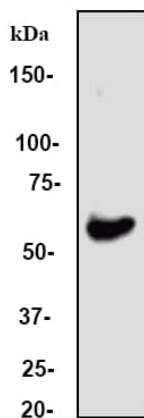
Immunohistochemistry (Formalin/PFA-fixed paraffin-embedded sections) - Anti-Estrogen Receptor alpha antibody [E115] - ChIP Grade (ab32063)

Immunohistochemical analysis of human breast carcinoma using anti-Estrogen Receptor alpha (ab32063, unpurified) diluted 1:50



Immunocytochemistry/ Immunofluorescence - Anti-Estrogen Receptor alpha antibody [E115] - ChIP Grade (ab32063)

Immunofluorescent staining of MCF7 cells (fixed with 4% PFA and permeabilized with TritonX 100) with purified ab32063 at a dilution of 1/250. An Alexa Fluor® 555 goat anti-rabbit antibody was used as the secondary at a dilution of 1/200. The panel on the right shows the DAPI counter-staining.

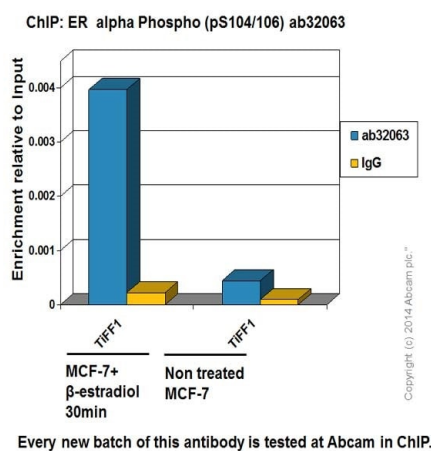


Western blot - Anti-Estrogen Receptor alpha antibody [E115] - ChIP Grade (ab32063)

Anti-Estrogen Receptor alpha antibody [E115] - ChIP Grade (ab32063) at 1/500 dilution (unpurified) + MCF-7 cell lysate

Predicted band size: 67 kDa

Observed band size: 60 kDa



ChIP - Anti-Estrogen Receptor alpha antibody [E115] - ChIP Grade (ab32063)

Chromatin was prepared from MCF-7+β-estradiol 30 min, and MCF-7 cells according to the Abcam X-ChIP protocol. Cells were fixed with formaldehyde for 10 min. The ChIP was performed with 25 µg of chromatin, 4 µg of purified ab32063 (blue), and 20 µL of anti-rabbit IgG sepharose beads. Rabbit normal IgG was added to the beads control (yellow). The immunoprecipitated DNA was quantified by real time PCR (SYBR approach). Primers are located in the 2nd intron of TFF1 gene.

MCF7 Cells were treated as below:

MCF-7 starved overnight, then treated with 10 nM β-Estradiol in 2% FBS media for 30 min.

Control MCF-7 was starved overnight, then in 2% FBS media for 30 mins.

Primer information:





Located to the 2 intron of TFF1 gene.

Sequence:

Forward: 5' -agtctctccaacctgacctt-3'

Reverse: 5' -ttccggccatctctcactat-3'

Why choose a recombinant antibody?

 <p>Research with confidence Consistent and reproducible results</p>	 <p>Long-term and scalable supply Recombinant technology</p>
 <p>Success from the first experiment Confirmed specificity</p>	 <p>Ethical standards compliant Animal-free production</p>

Anti-Estrogen Receptor alpha antibody [E115] -
ChIP Grade (ab32063)

Please note: All products are "FOR RESEARCH USE ONLY. NOT FOR USE IN DIAGNOSTIC PROCEDURES"

Our Abpromise to you: Quality guaranteed and expert technical support

- Replacement or refund for products not performing as stated on the datasheet
- Valid for 12 months from date of delivery
- Response to your inquiry within 24 hours
- We provide support in Chinese, English, French, German, Japanese and Spanish
- Extensive multi-media technical resources to help you
- We investigate all quality concerns to ensure our products perform to the highest standards

If the product does not perform as described on this datasheet, we will offer a refund or replacement. For full details of the Abpromise, please visit <https://www.abcam.co.jp/abpromise> or contact our technical team.

Terms and conditions

- Guarantee only valid for products bought direct from Abcam or one of our authorized distributors