

# Anti-Estrogen Inducible Protein pS2 antibody [EPR3972] ab92377

リコンビナント **RabMAb**

★★★★★ **3 Abreviews** **22 References** 画像数 11

### 製品の概要

製品名	Anti-Estrogen Inducible Protein pS2 antibody [EPR3972]
製品の詳細	Rabbit monoclonal [EPR3972] to Estrogen Inducible Protein pS2
由来種	Rabbit
アプリケーション	<b>適用あり:</b> WB, IP, IHC-P, ICC/IF, Flow Cyt (Intra)
種交差性	<b>交差種:</b> Human
免疫原	Synthetic peptide within Human Estrogen Inducible Protein pS2 aa 50-150. The exact sequence is proprietary.
ポジティブ・コントロール	WB: Human stomach lysate, MCF-7 cell lysate. IHC: Ductal infiltrating breast carcinoma, Ovarian carcinoma, Human breast carcinoma tissue. IP: MCF7 lysate. Flow cyt: MCF-7 cells. ICC: MCF-7 cells.
特記事項	<p>This product is a recombinant monoclonal antibody, which offers several advantages including:</p> <ul style="list-style-type: none"> <li>- High batch-to-batch consistency and reproducibility</li> <li>- Improved sensitivity and specificity</li> <li>- Long-term security of supply</li> <li>- Animal-free production</li> </ul> <p>For more information <a href="#">see here</a>.</p> <p>Our RabMAb<sup>®</sup> technology is a patented hybridoma-based technology for making rabbit monoclonal antibodies. For details on our patents, please refer to <a href="#">RabMAb<sup>®</sup> patents</a>.</p> <p>Mouse, Rat: We have preliminary internal testing data to indicate this antibody may not react with these species. Please contact us for more information.</p>

### 製品の特性

製品の状態	Liquid
保存方法	Shipped at 4°C. Upon delivery aliquot and store at -20°C. Avoid freeze / thaw cycles.
解離定数 (K <sub>D</sub> 値)	K <sub>D</sub> = 4.70 x 10 <sup>-11</sup> M





[Learn more about K<sub>D</sub>](#)

バッファー	pH: 7.20 Preservative: 0.01% Sodium azide Constituents: 9% PBS, 40% Glycerol (glycerin, glycerine), 0.05% BSA, 50% Tissue culture supernatant
精製度	Protein A purified
ポリ/モノ	モノクローナル
クローン名	EPR3972
アイソタイプ	IgG

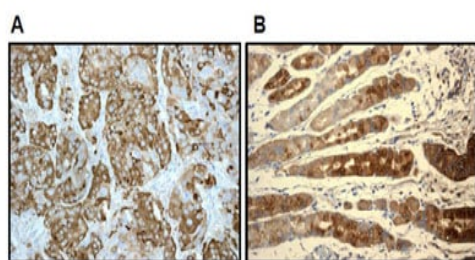
## アプリケーション

**The Abpromise guarantee**      **Abpromise保証は、次のテスト済みアプリケーションにおけるab92377の使用に適用されます**  
 アプリケーションノートには、推奨の開始希釈率がありますが、適切な希釈率につきましてはご検討ください。

アプリケーション	Abreviews	特記事項
WB	★★★★★ (3)	1/1000 - 1/10000. Predicted molecular weight: 9 kDa.
IP		1/10 - 1/100.
IHC-P		1/100 - 1/250. Perform heat mediated antigen retrieval with citrate buffer pH 6 before commencing with IHC staining protocol.
ICC/IF		1/100 - 1/250.
Flow Cyt (Intra)		Use at an assay dependent concentration.

## ターゲット情報

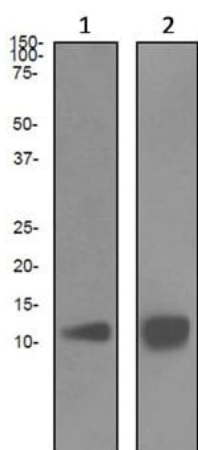
機能	Stabilizer of the mucous gel overlying the gastrointestinal mucosa that provides a physical barrier against various noxious agents. May inhibit the growth of calcium oxalate crystals in urine.
組織特異性	Found in stomach, with highest levels in the upper gastric mucosal cells (at protein level). Detected in goblet cells of the small and large intestine and rectum, small submucosal glands in the esophagus, mucous acini of the sublingual gland, submucosal glands of the trachea, and epithelial cells lining the exocrine pancreatic ducts but not in the remainder of the pancreas (at protein level). Scattered expression is detected in the epithelial cells of the gallbladder and submucosal glands of the vagina, and weak expression is observed in the bronchial goblet cells of the pseudostratified epithelia in the respiratory system (at protein level). Detected in urine (at protein level). Strongly expressed in breast cancer but at low levels in normal mammary tissue. It is regulated by estrogen in MCF-7 cells. Strong expression found in normal gastric mucosa and in the regenerative tissues surrounding ulcerous lesions of gastrointestinal tract, but lower expression found in gastric cancer (at protein level).
配列類似性	Contains 1 P-type (trefoil) domain.
細胞内局在	Secreted.



Immunohistochemistry (Formalin/PFA-fixed paraffin-embedded sections) - Anti-Estrogen Inducible Protein pS2 antibody [EPR3972] (ab92377)

ab92377 staining Estrogen Inducible Protein pS2 in Formalin-fixed, Paraffin-embedded Human breast carcinoma tissue (A) and Human stomach tissue (B) at 1/100 dilution. Detection: DAB staining.

Heat mediated antigen retrieval was performed with citrate buffer pH 6 before commencing with IHC staining protocol.



Western blot - Anti-Estrogen Inducible Protein pS2 antibody [EPR3972] (ab92377)

**All lanes** : Anti-Estrogen Inducible Protein pS2 antibody [EPR3972] (ab92377) at 1/1000 dilution

**Lane 1** : Human stomach lysate

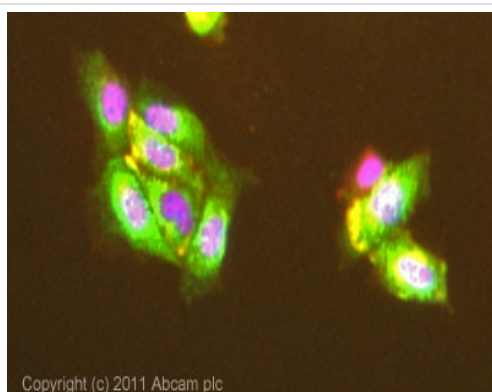
**Lane 2** : MCF-7 cell lysate

Lysates/proteins at 10 µg per lane.

#### Secondary

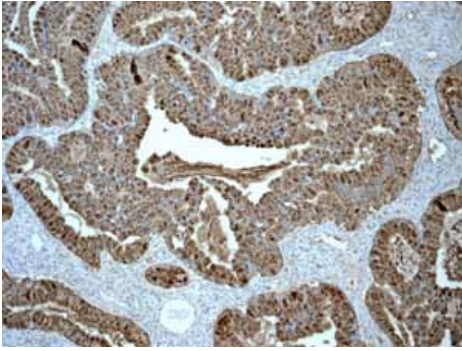
**All lanes** : HRP labelled goat anti-rabbit at 1/2000 dilution

**Predicted band size:** 9 kDa



Immunocytochemistry/ Immunofluorescence - Anti-Estrogen Inducible Protein pS2 antibody [EPR3972] (ab92377)

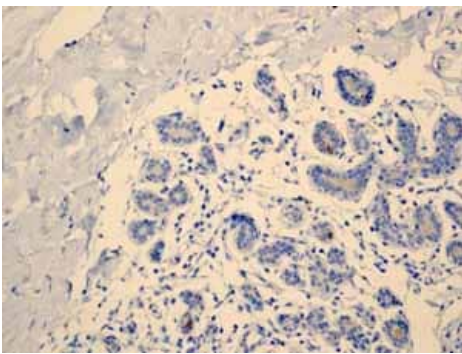
ICC/IF image of ab92377 stained MCF7 cells. The cells were 4% formaldehyde (10 min) and then incubated in 1%BSA / 10% normal goat serum / 0.3M glycine in 0.1% PBS-Tween for 1h to permeabilise the cells and block non-specific protein-protein interactions. The cells were then incubated with the antibody (ab92377, 1/100 dilution) overnight at +4°C. The secondary antibody (green) was [ab96899](#) Dylight 488 goat anti-rabbit IgG (H+L) used at a 1/250 dilution for 1h. Alexa Fluor® 594 WGA was used to label plasma membranes (red) at a 1/200 dilution for 1h. DAPI was used to stain the cell nuclei (blue) at a concentration of 1.43µM.



Immunohistochemistry (Formalin/PFA-fixed paraffin-embedded sections) - Anti-Estrogen Inducible Protein pS2 antibody [EPR3972] (ab92377)

ab92377 showing positive staining in Ovarian carcinoma tissue.

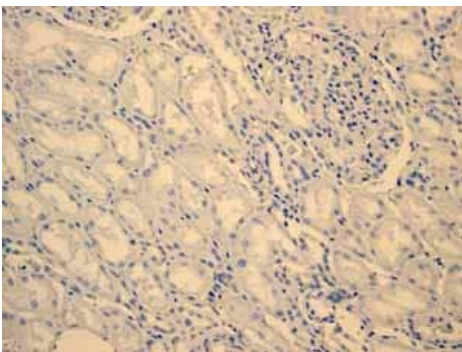
Heat mediated antigen retrieval was performed with citrate buffer pH 6 before commencing with IHC staining protocol.



Immunohistochemistry (Formalin/PFA-fixed paraffin-embedded sections) - Anti-Estrogen Inducible Protein pS2 antibody [EPR3972] (ab92377)

ab92377 showing negative staining in Normal breast tissue.

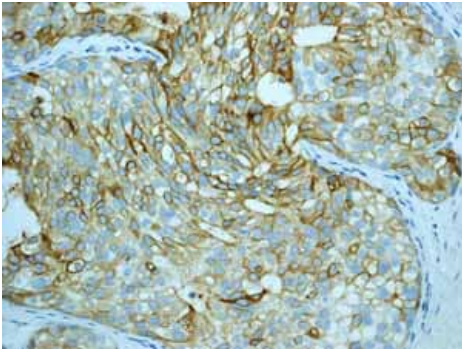
Heat mediated antigen retrieval was performed with citrate buffer pH 6 before commencing with IHC staining protocol.



Immunohistochemistry (Formalin/PFA-fixed paraffin-embedded sections) - Anti-Estrogen Inducible Protein pS2 antibody [EPR3972] (ab92377)

ab92377 showing negative staining in Normal kidney tissue.

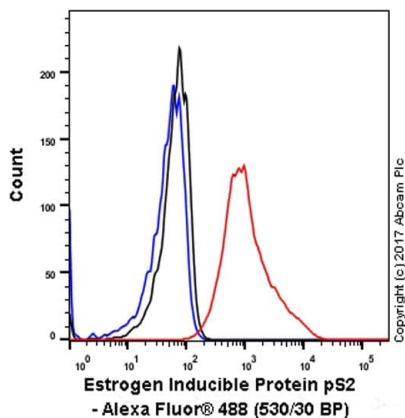
Heat mediated antigen retrieval was performed with citrate buffer pH 6 before commencing with IHC staining protocol.



Immunohistochemistry (Formalin/PFA-fixed paraffin-embedded sections) - Anti-Estrogen Inducible Protein pS2 antibody [EPR3972] (ab92377)

ab92377 showing positive staining in Ductal infiltrating breast carcinoma tissue.

Heat mediated antigen retrieval was performed with citrate buffer pH 6 before commencing with IHC staining protocol.



Flow Cytometry (Intracellular) - Anti-Estrogen Inducible Protein pS2 antibody [EPR3972] (ab92377)

Intracellular Flow Cytometry analysis of MCF-7 (human breast carcinoma) cells labeling Estrogen Inducible Protein pS2 with unpurified ab92377 at 1/20 dilution (10ug/ml) (red). Cells were fixed with 4% paraformaldehyde and permeabilised with 90% methanol. A Goat anti rabbit IgG (Alexa Fluor® 488) (1/2000 dilution) was used as the secondary antibody. Rabbit monoclonal IgG (Black) was used as the isotype control, cells without incubation with primary antibody and secondary antibody (Blue) were used as the unlabeled control.



Immunoprecipitation - Anti-Estrogen Inducible Protein pS2 antibody [EPR3972] (ab92377)

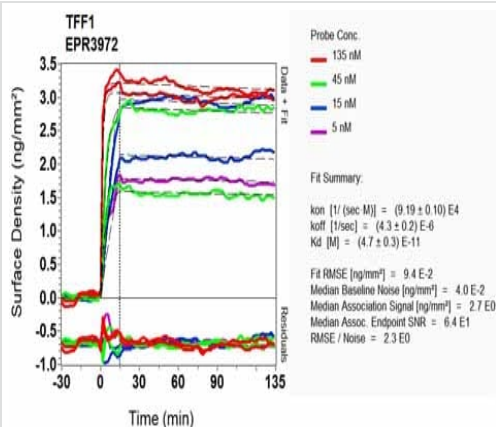
Estrogen Inducible Protein pS2 was immunoprecipitated from 0.35 mg MCF7 (Human breast adenocarcinoma epithelial cell) whole cell lysate 10 µg with 92377 at 1/50 dilution (2µg). VeriBlot for IP Detection Reagent (HRP)([ab131366](#)) was used at 1/5000 dilution.

**Lane 1:** MCF7 (Human breast adenocarcinoma epithelial cell) whole cell lysate 10 µg

**Lane 2:** ab92377 IP in MCF7 whole cell lysate

**Lane 3:** Rabbit monoclonal IgG ([ab172730](#)) instead of ab92377 in MCF7 whole cell lysate

Blocking and dilution buffer and concentration: 5% NFDM/TBST.



OL-RD Scanning - Anti-Estrogen Inducible Protein pS2 antibody [EPR3972] (ab92377)

Equilibrium dissociation constant ( $K_D$ )

Learn more about  $K_D$

[Click here to learn more about  \$K\_D\$](#)

Why choose a recombinant antibody?



**Research with confidence**  
Consistent and reproducible results



**Long-term and scalable supply**  
Recombinant technology



**Success from the first experiment**  
Confirmed specificity



**Ethical standards compliant**  
Animal-free production

Anti-Estrogen Inducible Protein pS2 antibody [EPR3972] (ab92377)

### **Our Abpromise to you: Quality guaranteed and expert technical support**

---

- Replacement or refund for products not performing as stated on the datasheet
- Valid for 12 months from date of delivery
- Response to your inquiry within 24 hours
  
- We provide support in Chinese, English, French, German, Japanese and Spanish
- Extensive multi-media technical resources to help you
- We investigate all quality concerns to ensure our products perform to the highest standards

If the product does not perform as described on this datasheet, we will offer a refund or replacement. For full details of the Abpromise, please visit <https://www.abcam.co.jp/abpromise> or contact our technical team.

### **Terms and conditions**

---

- Guarantee only valid for products bought direct from Abcam or one of our authorized distributors