


# Anti-ESAM antibody ab74777

[1 Abreviews](#) [画像数 1](#)

### 製品の概要

製品名	Anti-ESAM antibody
製品の詳細	Rabbit polyclonal to ESAM
由来種	Rabbit
アプリケーション	<b>適用あり:</b> WB <b>適用なし:</b> ICC/IF
種交差性	<b>交差種:</b> Human <b>交差が予測される動物種:</b> Cynomolgus monkey 
免疫原	Synthetic peptide corresponding to Human ESAM aa 100-200 conjugated to keyhole limpet haemocyanin. (Peptide available as <b>ab101730</b> )
ポジティブ・コントロール	This antibody gave a positive signal in the following lysates: Human Heart tissue; Human Liver tissue; Human Kidney tissue; Human Lung tissue; HepG2 whole cell; HEK293 whole cell.
特記事項	<p>The Life Science industry has been in the grips of a reproducibility crisis for a number of years. Abcam is leading the way in addressing this with our range of recombinant monoclonal antibodies and knockout edited cell lines for gold-standard validation. Please check that this product meets your needs before purchasing.</p> <p>If you have any questions, special requirements or concerns, please send us an inquiry and/or contact our Support team ahead of purchase. Recommended alternatives for this product can be found below, along with publications, customer reviews and Q&amp;As</p>

### 製品の特性

製品の状態	Liquid
保存方法	Shipped at 4°C. Store at +4°C short term (1-2 weeks). Upon delivery aliquot. Store at -20°C or -80°C. Avoid freeze / thaw cycle.
バッファー	pH: 7.40 Preservative: 0.02% Sodium azide Constituent: PBS
	Batches of this product that have a concentration < 1mg/ml may have BSA added as a stabilising agent. If you would like information about the formulation of a specific lot, please contact our scientific support team who will be happy to help.

精製度	Immunogen affinity purified
ポリモノ	ポリクローナル
アイソタイプ	IgG

## アプリケーション

**The Abpromise guarantee** **Abpromise保証は、次のテスト済みアプリケーションにおけるab74777の使用に適用されます**  
 アプリケーションノートには、推奨の開始希釈率がありますが、適切な希釈率につきましてはご検討ください。

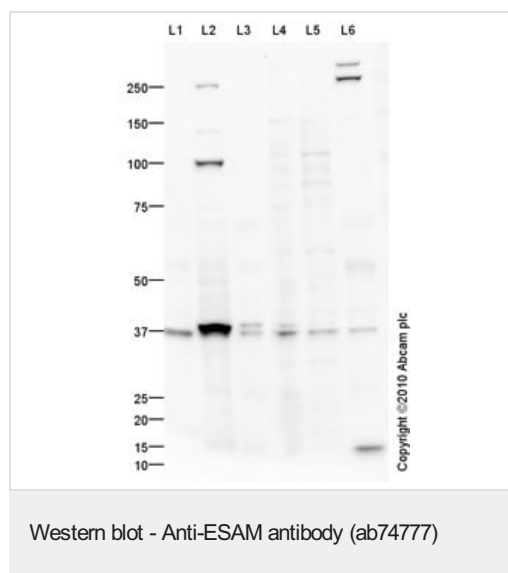
アプリケーション	Abreviews	特記事項
WB		Use a concentration of 1 µg/ml. Detects a band of approximately 37 kDa (predicted molecular weight: 41 kDa).

**追加情報** Is unsuitable for ICC/IF.

## ターゲット情報

<b>機能</b>	Can mediate aggregation most likely through a homophilic molecular interaction.
<b>組織特異性</b>	Highly expressed in endothelial cells.
<b>配列類似性</b>	Contains 1 Ig-like C2-type (immunoglobulin-like) domain. Contains 1 Ig-like V-type (immunoglobulin-like) domain.
<b>細胞内局在</b>	Cell junction > adherens junction. Cell junction > tight junction. Cell membrane.

## 画像



**All lanes** : Anti-ESAM antibody (ab74777) at 1 µg/ml

**Lane 1** : Human heart tissue lysate - total protein ([ab29431](#))

**Lane 2** : Human liver tissue lysate - total protein ([ab29889](#))

**Lane 3** : Human kidney tissue lysate - total protein ([ab30203](#))

**Lane 4** : HepG2 (Human hepatocellular liver carcinoma cell line)  
Whole Cell Lysate

**Lane 5** : HEK293 (Human embryonic kidney cell line) Whole Cell  
Lysate

**Lane 6** : Lung (Human) Tissue Lysate

Lysates/proteins at 10 µg per lane.

### Secondary

**All lanes** : Annexin-2/ANXA2 overexpression 293T lysate (whole cell) ([ab94080](#)) at 1/5000 dilution

Developed using the ECL technique.

Performed under reducing conditions.

**Predicted band size:** 41 kDa

**Observed band size:** 37,41 kDa

**Additional bands at:** 100 kDa, 15 kDa, 250 kDa. We are unsure as to the identity of these extra bands.

**Exposure time:** 3 minutes

The ESAM protein has a predicted molecular weight of 41 kDa. The first 29 amino acids of the ESAM sequence act as a signal sequence. The band at 37 kDa may represent the cleaved form of the ESAM protein.

**Please note:** All products are "FOR RESEARCH USE ONLY. NOT FOR USE IN DIAGNOSTIC PROCEDURES"

#### **Our Abpromise to you: Quality guaranteed and expert technical support**

---

- Replacement or refund for products not performing as stated on the datasheet
- Valid for 12 months from date of delivery
- Response to your inquiry within 24 hours
  
- We provide support in Chinese, English, French, German, Japanese and Spanish
- Extensive multi-media technical resources to help you
- We investigate all quality concerns to ensure our products perform to the highest standards

If the product does not perform as described on this datasheet, we will offer a refund or replacement. For full details of the Abpromise, please visit <https://www.abcam.co.jp/abpromise> or contact our technical team.

#### **Terms and conditions**

---

- Guarantee only valid for products bought direct from Abcam or one of our authorized distributors