

Anti-ERp72 antibody ab82587

★★★★★ [2 Abreviews](#) [4 References](#) [画像数 1](#)

製品の概要

製品名	Anti-ERp72 antibody
製品の詳細	Rabbit polyclonal to ERp72
由来種	Rabbit
アプリケーション	適用あり: WB
種交差性	交差種: Mouse, Rat, Human
免疫原	Synthetic peptide: FIDEHATKRSRTKEEL, corresponding to amino acids 623-638 of Mouse ERp72, conjugated to KLH and with an added cysteine residue Run BLAST with Expasy Run BLAST with NCBI
ポジティブ・コントロール	Liver microsome extracts.
特記事項	<p>The Life Science industry has been in the grips of a reproducibility crisis for a number of years. Abcam is leading the way in addressing this with our range of recombinant monoclonal antibodies and knockout edited cell lines for gold-standard validation. Please check that this product meets your needs before purchasing.</p> <p>If you have any questions, special requirements or concerns, please send us an inquiry and/or contact our Support team ahead of purchase. Recommended alternatives for this product can be found below, along with publications, customer reviews and Q&As</p>

製品の特性

製品の状態	Liquid
保存方法	Shipped at 4°C. Upon delivery aliquot and store at -20°C. Avoid freeze / thaw cycles.
バッファー	Preservative: 0.09% Sodium azide Constituents: 50% Glycerol (glycerin, glycerine), PBS
精製度	Protein A purified
ポリ/モノ	ポリクローナル
アイソタイプ	IgG

アプリケーション

The Abpromise guarantee

Abpromise保証は、 次のテスト済みアプリケーションにおけるab82587の使用に適用されます

アプリケーションノートには、推奨の開始希釈率がありますが、適切な希釈率につきましてはご確認ください。

アプリケーション	Abreviews	特記事項
WB	★★★★★ (2)	1/1000. Detects a band of approximately 73 kDa (predicted molecular weight: 73 kDa).

ターゲット情報

配列類似性

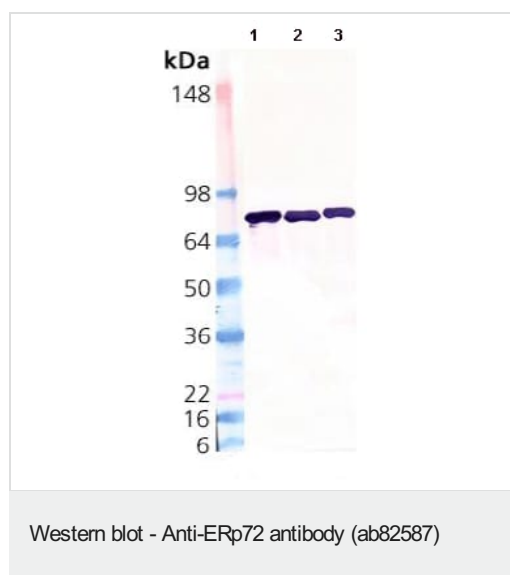
Belongs to the protein disulfide isomerase family.

Contains 3 thioredoxin domains.

細胞内局在

Endoplasmic reticulum lumen. Melanosome. Identified by mass spectrometry in melanosome fractions from stage I to stage IV.

画像



All lanes : Anti-ERp72 antibody (ab82587) at 1/1000 dilution

Lane 1 : Rat liver microsome extract

Lane 2 : Mouse liver microsome extract

Lane 3 : Human liver microsome extract

Predicted band size: 73 kDa

Observed band size: 73 kDa

Please note: All products are "FOR RESEARCH USE ONLY. NOT FOR USE IN DIAGNOSTIC PROCEDURES"

Our Abpromise to you: Quality guaranteed and expert technical support

- Replacement or refund for products not performing as stated on the datasheet
- Valid for 12 months from date of delivery
- Response to your inquiry within 24 hours
- We provide support in Chinese, English, French, German, Japanese and Spanish
- Extensive multi-media technical resources to help you
- We investigate all quality concerns to ensure our products perform to the highest standards

If the product does not perform as described on this datasheet, we will offer a refund or replacement. For full details of the Abpromise, please visit <https://www.abcam.co.jp/abpromise> or contact our technical team.

Terms and conditions

- Guarantee only valid for products bought direct from Abcam or one of our authorized distributors