


Anti-ERp57 antibody ab88098

KO 評価済

★★★★★ 1 Abreviews 画像数 2

製品の概要

製品名	Anti-ERp57 antibody
製品の詳細	Rabbit polyclonal to ERp57
由来種	Rabbit
アプリケーション	適用あり: WB
種交差性	交差種: Mouse, Human, Chinese hamster 交差が予測される動物種: Sheep, Goat, Cow, Baboon, Orangutan 
免疫原	Synthetic peptide. This information is proprietary to Abcam and/or its suppliers.
特記事項	<p>The Life Science industry has been in the grips of a reproducibility crisis for a number of years. Abcam is leading the way in addressing this with our range of recombinant monoclonal antibodies and knockout edited cell lines for gold-standard validation. Please check that this product meets your needs before purchasing.</p> <p>If you have any questions, special requirements or concerns, please send us an inquiry and/or contact our Support team ahead of purchase. Recommended alternatives for this product can be found below, along with publications, customer reviews and Q&As</p>

製品の特性

製品の状態	Liquid
保存方法	Shipped at 4°C. Store at +4°C short term (1-2 weeks). Upon delivery aliquot. Store at -20°C or -80°C. Avoid freeze / thaw cycle.
バッファー	pH: 7.40 Preservative: 0.02% Sodium azide Constituent: PBS
精製度	Batches of this product that have a concentration < 1mg/ml may have BSA added as a stabilising agent. If you would like information about the formulation of a specific lot, please contact our scientific support team who will be happy to help.
ポリ/モノ	Immunogen affinity purified ポリクローナル

アプリケーション

The Abpromise guarantee

Abpromise保証は、次のテスト済みアプリケーションにおけるab88098の使用に適用されます

アプリケーションノートには、推奨の開始希釈率がありますが、適切な希釈率につきましてはご検討ください。

アプリケーション	Abreviews	特記事項
WB		Use a concentration of 1 µg/ml. Detects a band of approximately 57 kDa (predicted molecular weight: 57 kDa).

ターゲット情報

組織特異性

Detected in the flagellum and head region of spermatozoa (at protein level).

配列類似性

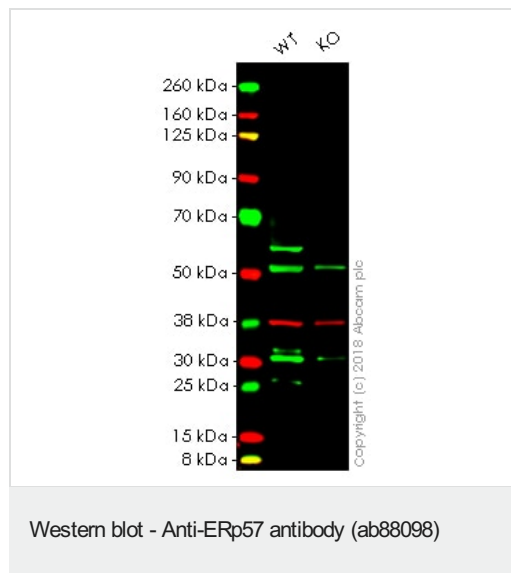
Belongs to the protein disulfide isomerase family.

Contains 2 thioredoxin domains.

細胞内局在

Endoplasmic reticulum lumen. Melanosome. Identified by mass spectrometry in melanosome fractions from stage I to stage IV.

画像



All lanes : Anti-ERp57 antibody (ab88098) at 1 µg/ml

Lane 1 : Wild-type HAP1 whole cell lysate

Lane 2 : PDIA3 (ERp57) knockout HAP1 whole cell lysate

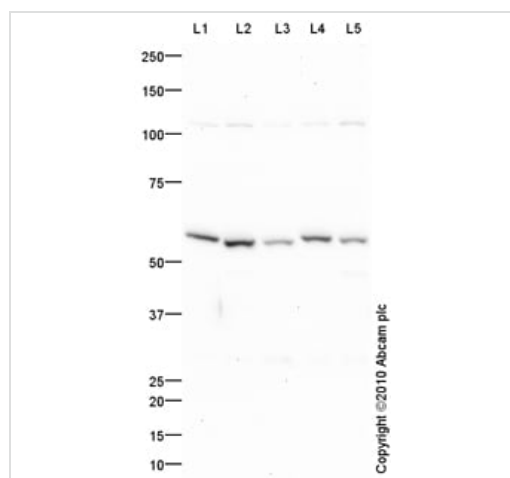
Lysates/proteins at 20 µg per lane.

Predicted band size: 57 kDa

Lanes 1 - 2: Merged signal (red and green). Green - ab88098 observed at 57 kDa. Red - loading control, **ab9484**, observed at 37 kDa.

ab88098 was shown to recognize PDIA3 in wild-type HAP1 cells as signal was lost at the expected MW in PDIA3 (ERp57) knockout cells. Additional cross-reactive bands were observed in the wild-type and knockout cells. Wild-type and PDIA3 (ERp57) knockout samples were subjected to SDS-PAGE. Ab88098 and **ab9484** (Mouse anti-GAPDH loading control) were incubated overnight at 4°C at 1 µg/ml and 1/20000 dilution respectively. Blots were

developed with Goat anti-Rabbit IgG H&L (IRDye® 800CW)
preabsorbed **ab216773** and Goat anti-Mouse IgG H&L (IRDye®
680RD) preabsorbed **ab216776** secondary antibodies at 1/10000
dilution for 1 hour at room temperature before imaging.



Western blot - Anti-ERp57 antibody (ab88098)

All lanes : Anti-ERp57 antibody (ab88098) at 1 µg/ml

Lane 1 : HeLa (Human epithelial carcinoma cell line) Whole Cell Lysate

Lane 2 : HepG2 (Human hepatocellular liver carcinoma cell line) Whole Cell Lysate

Lane 3 : HEK293 (Human embryonic kidney cell line) Whole Cell Lysate

Lane 4 : RAW 264.7 (Mouse leukaemic monocyte macrophage cell line) Whole Cell Lysate

Lane 5 : CHO-K1 cell lysate Whole Cell Lysate

Lysates/proteins at 10 µg per lane.

Secondary

All lanes : Goat polyclonal to Rabbit IgG - H&L - Pre-Adsorbed (HRP) at 1/3000 dilution

Developed using the ECL technique.

Performed under reducing conditions.

Predicted band size: 57 kDa

Observed band size: 57 kDa

Additional bands at: 110 kDa. We are unsure as to the identity of these extra bands.

Exposure time: 2 minutes

Please note: All products are "FOR RESEARCH USE ONLY. NOT FOR USE IN DIAGNOSTIC PROCEDURES"

Our Abpromise to you: Quality guaranteed and expert technical support

- Replacement or refund for products not performing as stated on the datasheet
- Valid for 12 months from date of delivery
- Response to your inquiry within 24 hours
- We provide support in Chinese, English, French, German, Japanese and Spanish

- Extensive multi-media technical resources to help you
- We investigate all quality concerns to ensure our products perform to the highest standards

If the product does not perform as described on this datasheet, we will offer a refund or replacement. For full details of the Abpromise, please visit <https://www.abcam.co.jp/abpromise> or contact our technical team.

Terms and conditions

- Guarantee only valid for products bought direct from Abcam or one of our authorized distributors