

Anti-ERp57 antibody ab13507

★★★★★ [6 Abreviews](#) [9 References](#) [画像数 4](#)

製品の概要

製品名	Anti-ERp57 antibody
製品の詳細	Rabbit polyclonal to ERp57
由来種	Rabbit
アプリケーション	適用あり: WB, ICC/IF
種交差性	交差種: Mouse, Rat, Human, Chinese hamster
免疫原	Tissue, cells or virus corresponding to Rat ERp57. Database link: P11598
特記事項	<p>The Life Science industry has been in the grips of a reproducibility crisis for a number of years. Abcam is leading the way in addressing this with our range of recombinant monoclonal antibodies and knockout edited cell lines for gold-standard validation. Please check that this product meets your needs before purchasing.</p> <p>If you have any questions, special requirements or concerns, please send us an inquiry and/or contact our Support team ahead of purchase. Recommended alternatives for this product can be found below, along with publications, customer reviews and Q&As</p>

製品の特性

製品の状態	Liquid
保存方法	Shipped at 4°C. Upon delivery aliquot and store at -20°C. Avoid freeze / thaw cycles.
バッファー	Preservative: 0.09% Sodium azide Constituents: PBS, 50% Glycerol (glycerin, glycerine)
精製度	Protein A purified
ポリ/モノ	ポリクローナル
アイソタイプ	IgG

アプリケーション

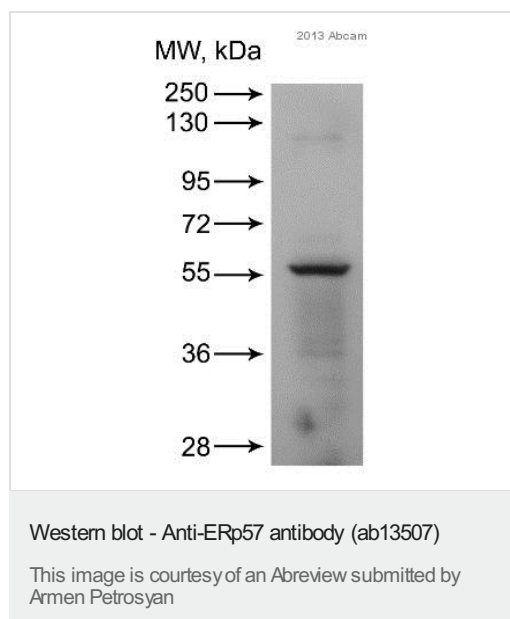
The Abpromise guarantee [Abpromise保証](#)は、次のテスト済みアプリケーションにおけるab13507の使用に適用されます
アプリケーションノートには、推奨の開始希釈率がありますが、適切な希釈率につきましてはご検討ください。

アプリケーション	Abreviews	特記事項
WB	★★★★★ (3)	1/1000. Predicted molecular weight: 57 kDa. This dilution detects Erp57 in 20µg of rat liver microsomal preparation by ECL analysis.
ICC/IF	★★★★★ (3)	1/1000.

ターゲット情報

組織特異性	Detected in the flagellum and head region of spermatozoa (at protein level).
配列類似性	Belongs to the protein disulfide isomerase family. Contains 2 thioredoxin domains.
細胞内局在	Endoplasmic reticulum lumen. Melanosome. Identified by mass spectrometry in melanosome fractions from stage I to stage IV.

画像



Anti-ERp57 antibody (ab13507) at 1/2000 dilution + Human LNCaP whole cell lysate at 25 µg

Secondary

HRP-conjugated Donkey anti-rabbit at 1/10000 dilution

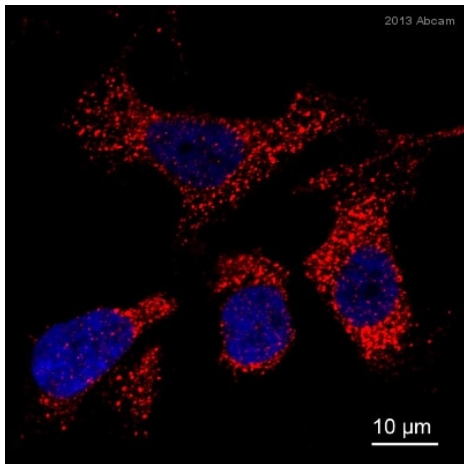
Developed using the ECL technique.

Performed under reducing conditions.

Predicted band size: 57 kDa

Observed band size: 55 kDa

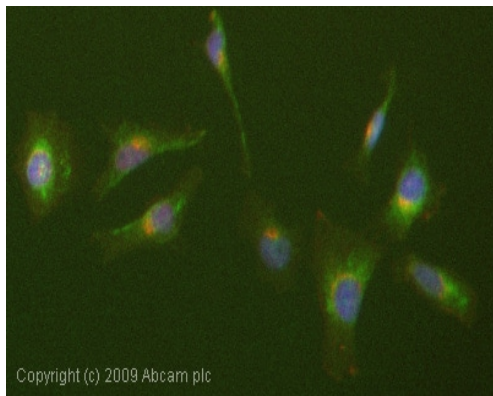
Exposure time: 45 seconds



Immunocytochemistry/ Immunofluorescence - Anti-ERp57 antibody (ab13507)

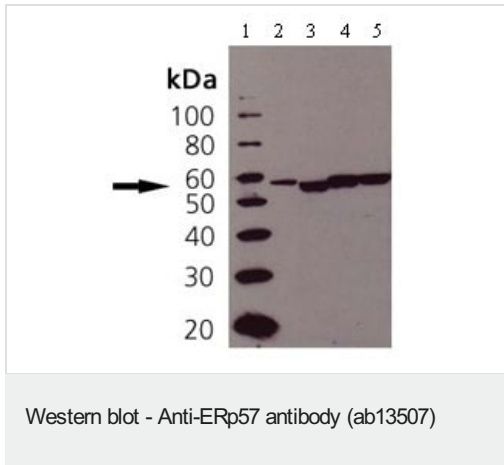
This image is courtesy of an Abreview submitted by Armen Petrosyan

ab13507 staining ERp57 in the Human PC-3 prostate cancer cells by ICC/IF (Immunocytochemistry/immunofluorescence). Cells were fixed with formaldehyde and blocked with 1% serum for 1 hour at 22°C. Samples were incubated with primary antibody (1/50 in 1% Donkey serum in PBST) for 1 hour at 22°C. An undiluted Alexa Fluor® 594-conjugated Donkey anti-rabbit IgG polyclonal was used as the secondary antibody.



Immunocytochemistry/ Immunofluorescence - Anti-ERp57 antibody (ab13507)

ICC/IF image of ab13507 stained HeLa cells. The cells were 4% PFA fixed (10 min) and then incubated in 1%BSA / 10% normal goat serum / 0.3M glycine in 0.1% PBS-Tween for 1h to permeabilise the cells and block non-specific protein-protein interactions. The cells were then incubated with the antibody (ab13507, 1/1000 dilution) overnight at +4°C. The secondary antibody (green) was Alexa Fluor® 488 goat anti-rabbit IgG (H+L) used at a 1/1000 dilution for 1h. Alexa Fluor® 594 WGA was used to label plasma membranes (red) at a 1/200 dilution for 1h. DAPI was used to stain the cell nuclei (blue) at a concentration of 1.43μM.



All lanes : Anti-ERp57 antibody (ab13507) at 1/1000 dilution

Lane 1 : Molecular weight marker

Lane 2 : Cell lysates prepared from CHO-K1 cells

Lane 3 : Cell lysates prepared from human liver microsomes

Lane 4 : Cell lysates prepared from rat liver microsomes

Lane 5 : Cell lysates prepared from mouse liver microsomes

Predicted band size: 57 kDa

Please note: All products are "FOR RESEARCH USE ONLY. NOT FOR USE IN DIAGNOSTIC PROCEDURES"

Our Abpromise to you: Quality guaranteed and expert technical support

- Replacement or refund for products not performing as stated on the datasheet
- Valid for 12 months from date of delivery
- Response to your inquiry within 24 hours
- We provide support in Chinese, English, French, German, Japanese and Spanish
- Extensive multi-media technical resources to help you
- We investigate all quality concerns to ensure our products perform to the highest standards

If the product does not perform as described on this datasheet, we will offer a refund or replacement. For full details of the Abpromise, please visit <https://www.abcam.co.jp/abpromise> or contact our technical team.

Terms and conditions

- Guarantee only valid for products bought direct from Abcam or one of our authorized distributors