

# Anti-ERp57 antibody ab10287

★★★★★ **2 Abreviews**   **37 References**   画像数 4

### 製品の概要

製品名	Anti-ERp57 antibody
製品の詳細	Rabbit polyclonal to ERp57
由来種	Rabbit
アプリケーション	<b>適用あり:</b> ICC/IF, WB
種交差性	<b>交差種:</b> Mouse, Human
免疫原	Recombinant full length protein corresponding to Mouse ERp57. Database link: <b><u>P27773</u></b>
ポジティブ・コントロール	WB: Mouse embryonic cells.
特記事項	<p>The Life Science industry has been in the grips of a reproducibility crisis for a number of years. Abcam is leading the way in addressing this with our range of recombinant monoclonal antibodies and knockout edited cell lines for gold-standard validation. Please check that this product meets your needs before purchasing.</p> <p>If you have any questions, special requirements or concerns, please send us an inquiry and/or contact our Support team ahead of purchase. Recommended alternatives for this product can be found below, along with publications, customer reviews and Q&amp;As</p>

### 製品の特性

製品の状態	Liquid
保存方法	Shipped at 4°C. Store at +4°C short term (1-2 weeks). Upon delivery aliquot. Store at -20°C or -80°C. Avoid freeze / thaw cycle.
精製度	Whole antiserum
ポリ/モノ	ポリクローナル
アイソタイプ	IgG

### アプリケーション

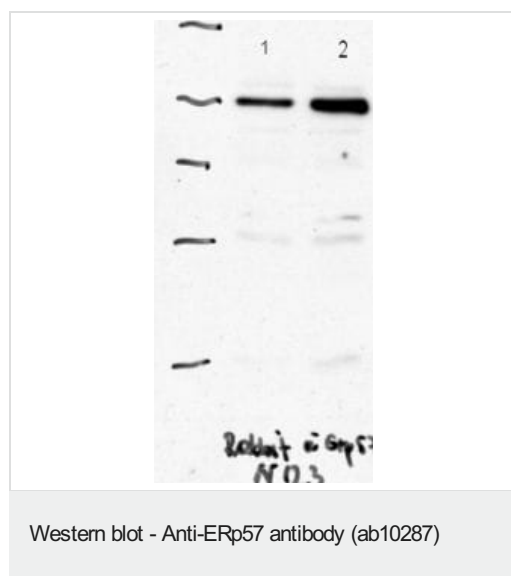
**The Abpromise guarantee**      **Abpromise保証は、次のテスト済みアプリケーションにおけるab10287の使用に適用されます**  
 アプリケーションノートには、推奨の開始希釈率がありますが、適切な希釈率につきましてはご検討ください。

アプリケーション	Abreviews	特記事項
ICC/IF	★★★★★ (1)	Use at an assay dependent concentration.
WB	★★★★★ (1)	1/1000 - 1/3000. Detects a band of approximately 57 kDa (predicted molecular weight: 61 kDa).

## ターゲット情報

組織特異性	Detected in the flagellum and head region of spermatozoa (at protein level).
配列類似性	Belongs to the protein disulfide isomerase family. Contains 2 thioredoxin domains.
細胞内局在	Endoplasmic reticulum lumen. Melanosome. Identified by mass spectrometry in melanosome fractions from stage I to stage IV.

## 画像



**All lanes** : Anti-ERp57 antibody (ab10287) at 1/1000 dilution

**Lane 1** : Mouse embryonic cells

**Lane 2** : Calreticulin deficient mouse embryonic cells

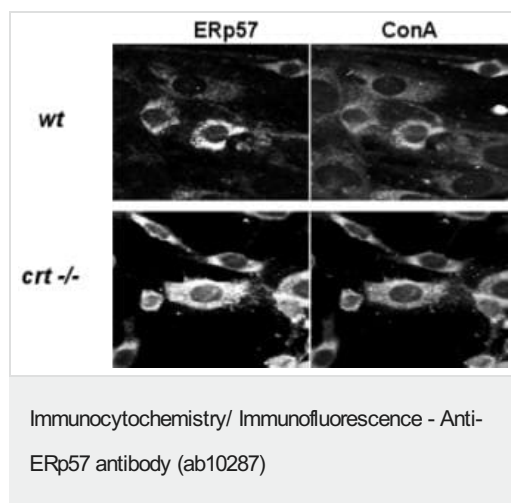
**Predicted band size:** 61 kDa

**Observed band size:** 57 kDa

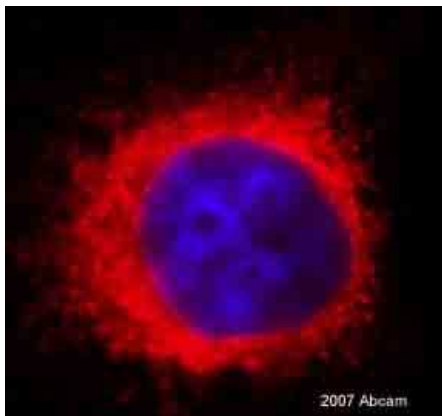
Western blot using ab10287 at 1/1000.

Lane 1 – Mouse Embryonic Fibroblasts.

Lane 2 – Calreticulin deficient Mouse Embryonic Fibroblasts.



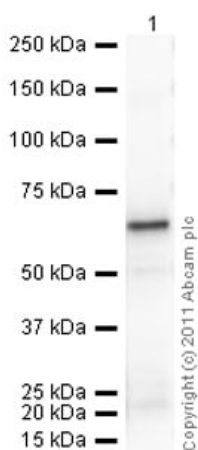
Double staining of mouse embryonic fibroblasts (top) and calreticulin deficient fibroblasts (bottom) with rabbit-anti-ERp57 antibodies (1:100; upper and lower left panel) and FITC-ConA (upper and lower right panel).



Immunocytochemistry/ Immunofluorescence - Anti-ERp57 antibody (ab10287)

This image is courtesy of an anonymous Abreview

ab10287 at 1/100 staining human HeLa cells by ICC/IF. The cells were permeabilized with digitonin before being blocked and then stained with the antibody for 1 hour. An Alexa-Fluor® conjugated goat anti rabbit antibody was used as the secondary.



Western blot - Anti-ERp57 antibody (ab10287)

Anti-ERp57 antibody (ab10287) at 1/1000 dilution + Recombinant Human ERp57 protein ([ab92937](#)) at 0.01 µg

#### Secondary

Goat polyclonal to Rabbit IgG - H&L - Pre-Adsorbed (HRP) ([ab65484](#)) at 1/5000 dilution

Developed using the ECL technique.

Performed under reducing conditions.

**Predicted band size:** 61 kDa

**Exposure time:** 150 seconds

**Please note:** All products are "FOR RESEARCH USE ONLY. NOT FOR USE IN DIAGNOSTIC PROCEDURES"

#### Our Abpromise to you: Quality guaranteed and expert technical support

- Replacement or refund for products not performing as stated on the datasheet
- Valid for 12 months from date of delivery
- Response to your inquiry within 24 hours
- We provide support in Chinese, English, French, German, Japanese and Spanish
- Extensive multi-media technical resources to help you
- We investigate all quality concerns to ensure our products perform to the highest standards

If the product does not perform as described on this datasheet, we will offer a refund or replacement. For full details of the Abpromise, please visit <https://www.abcam.co.jp/abpromise> or contact our technical team.

## Terms and conditions

---

- Guarantee only valid for products bought direct from Abcam or one of our authorized distributors